

Sonosite ZX Stand and Accessory Assembly Instructions

Manufacturer	EC Authorized Representative	Australia Sponsor
FUJIFILM SonoSite, Inc. 21919 30th Drive SE Bothell, WA 98021 USA T: 1-888-482-9449 or 1-425-951-1200 F: 1-425-951-1201	FUJIFILM SonoSite B.V. Joop Geesinkweg 140 1114 AB Amsterdam, The Netherlands	FUJIFILM SonoSite Australasia Pty Ltd 114 Old Pittwater Road BROOKVALE, NSW, 2100 Australia



CAUTION

United States federal law restricts this device to sale by or on the order of a physician.

SonoMB, SONOSITE, Steep Needle Profiling, and the SONOSITE logo are trademarks and registered trademarks of FUJIFILM SonoSite, Inc., in various jurisdictions. FUJIFILM is a registered trademark of FUJIFILM Corporation in various jurisdictions. Value from Innovation is a trademark of FUJIFILM Holdings America Corporation. DICOM is a registered trademark of the National Electrical Manufacturers Association. All other trademarks are the property of their respective owners.

Patent: www.sonosite.com/patents



P27537-01

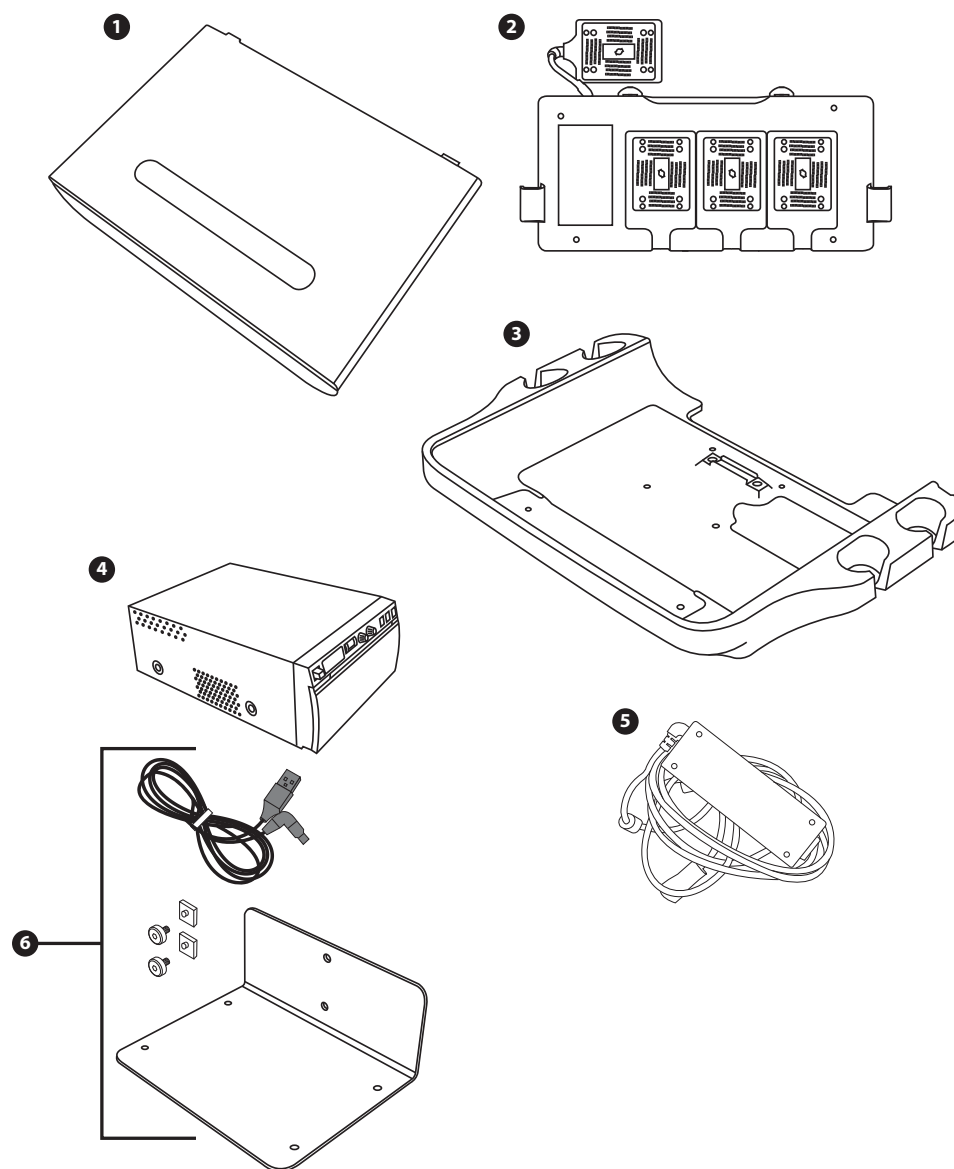
Published Jan 23, 2023

Copyright © 2023 FUJIFILM SonoSite, Inc. All rights reserved.

Table of Contents

- Inside the boxes 1**
- Unpack and build the stand 5**
- Install the storage bin, printer (optional), and power supply 7**
- Install the stand battery (optional) 11**
- Install the stand head 13**
- Install the system batteries 15**
- Install the triple transducer connector 16**
- Connect the stand to power 18**

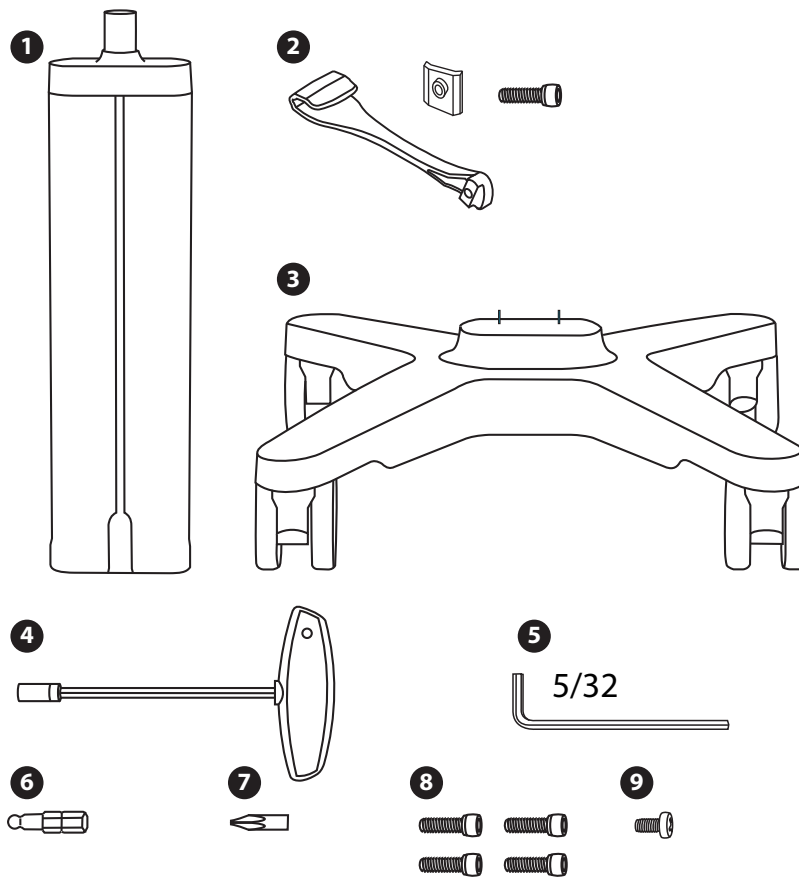
Inside the boxes



These items are packaged in separate boxes.

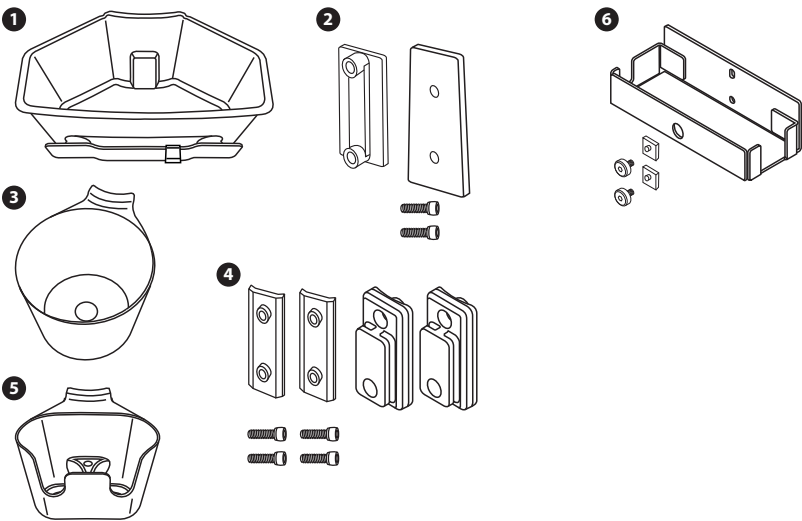
- | | |
|--|---|
| 1 Sonosite ZX | 4 Printer (optional) |
| 2 Triple Transducer Connector (optional) | 5 Power supply |
| 3 Stand head | 6 Printer storage tray, USB cable, and fasteners (optional) |

Stand box



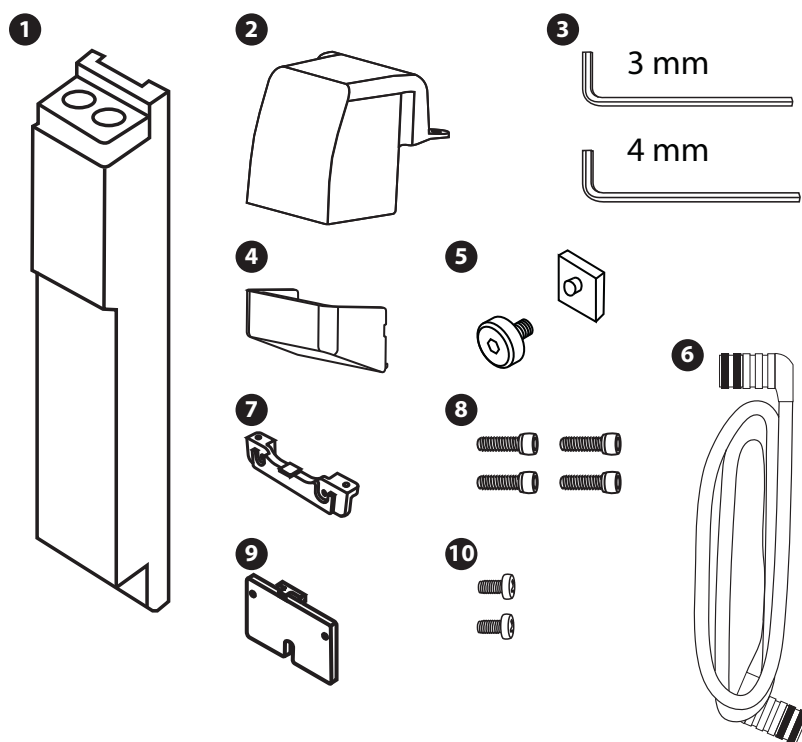
1 Stand column	6 4 mm ball hex bit
2 AC cord hook with fasteners	7 #2 Phillips bit
3 Stand base	8 M5 x 12 mm socket screws
4 Bit driver	9 1/4-20 1/2 inch screw
5 5/32 inch hex key	

Storage box



1 Storage basket	4 Mounting hardware for the gel and wipes holders
2 Storage basket mounting hardware	5 Gel holder
3 Wipes holder	6 Power supply tray and mounting fasteners

Stand battery box and stand battery mounting kit box



1 Stand battery (packaged separately)

2 Top cover

3 3 mm and 4 mm hex keys

4 Bottom cover

5 Nut pad and screw

6 DC battery cable

7 Top mounting bracket

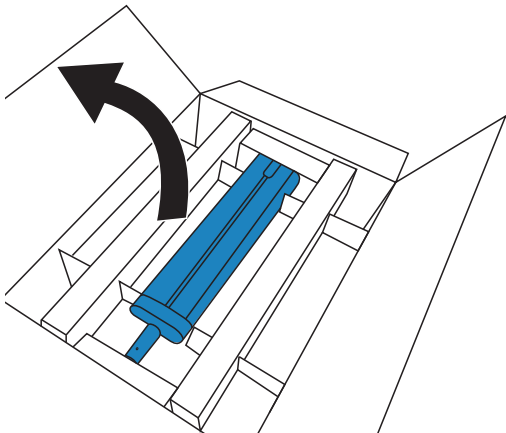
8 M4 x 16 mm socket screws

9 Bottom mounting bracket

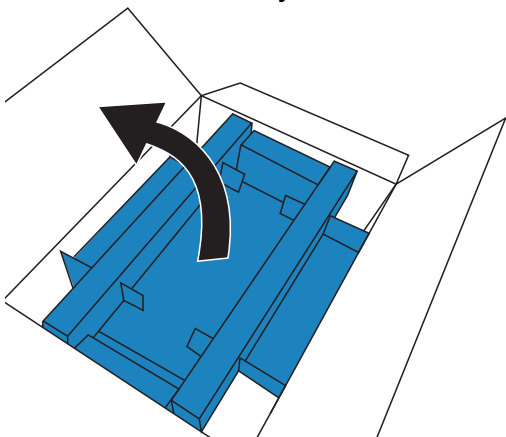
10 M4 x 8 mm screws

Unpack and build the stand

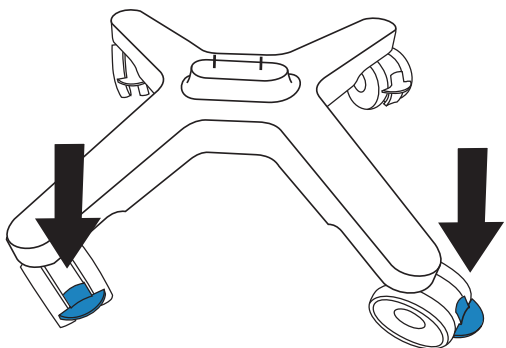
1. Open the box and then set the the stand column aside.



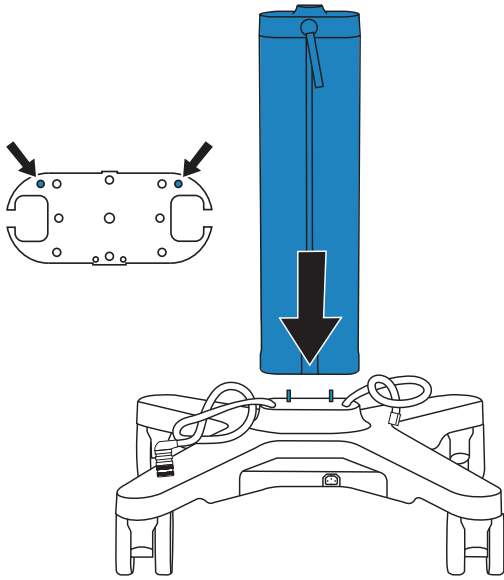
2. Remove the accessory kit and all the cardboard from inside the box.



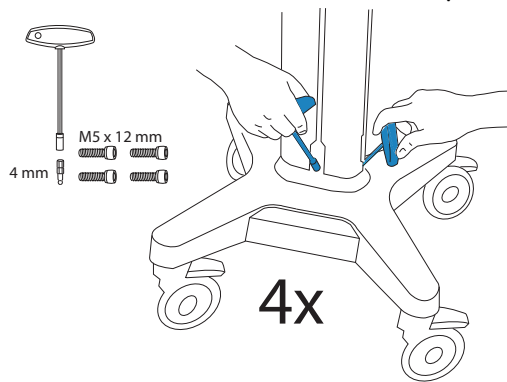
3. Remove the packing material from the base.
4. Place the base, wheel side down, on the floor.
5. Lock two wheels.



6. Locate the two mounting pins on the base and align them with the holes in the column.

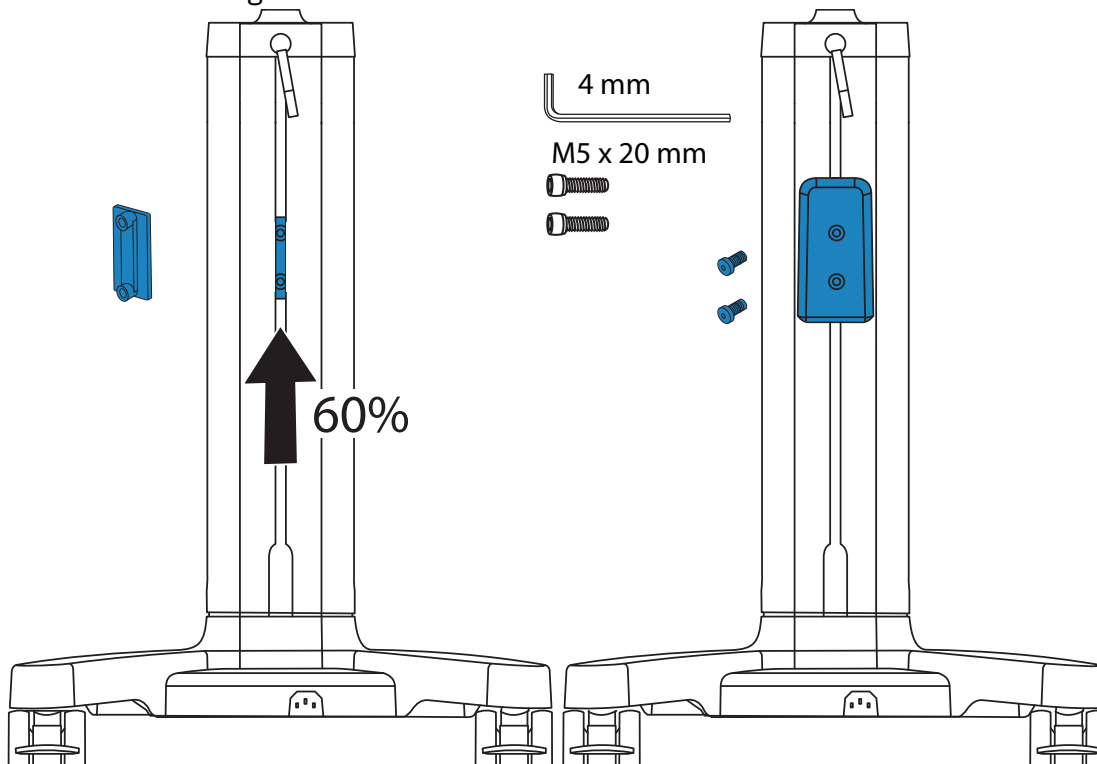


7. Use the provided 4 mm ball hex driver to secure the column to the stand with four M5 mm x 12 mm socket screws on the front, rear, and both sides.

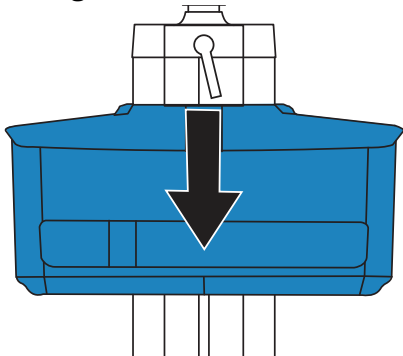


Install the storage bin, printer (optional), and power supply

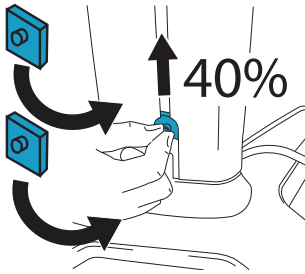
1. Insert the dual pad into the front central column channel and use the 4 mm hex key with two M5 x 20 mm hex screws to mount the storage bin holder. Slide it 60% of the way up the column and then tighten the screws.



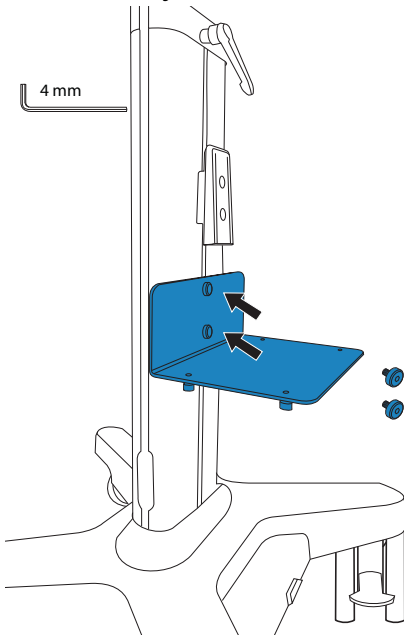
2. Hook the storage bin over the storage bin mount and press down firmly until it is seated. If the height adjustment handle is in the way, you may need to adjust the position of the storage bin mount.



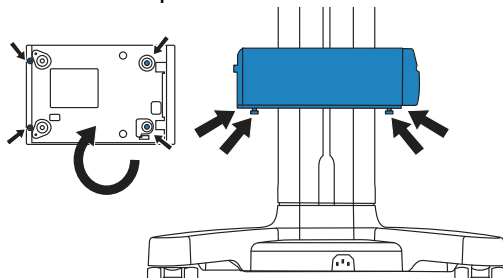
3. If you are not installing a printer, skip to step 6 [9].
Insert two nut pads in the central rear column channel, and then slide them about 40% of the way up.



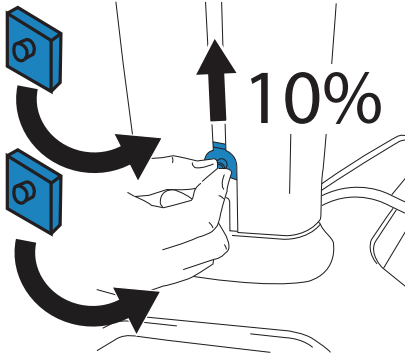
4. Slide another single nut pad up into the column and then secure the printer shelf with the 4mm hex key and two M5 hex screws.



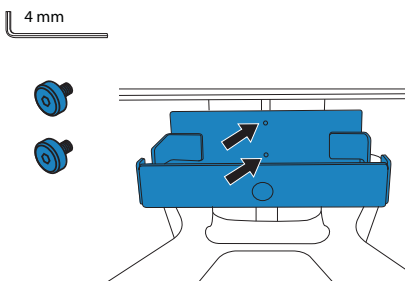
5. Set the printer on the shelf and then use the four thumb screws to secure it. The left thumbscrews use the holes at the rear edge of the printer. The right screws go through the rubber foot pads.



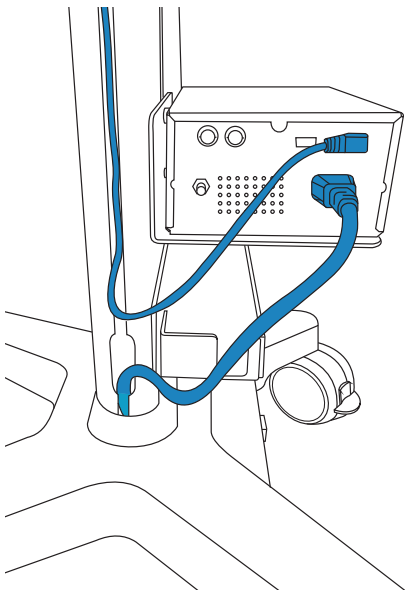
6. Insert two nut pads in the central rear column channel, and then slide them about 10% of the way up.



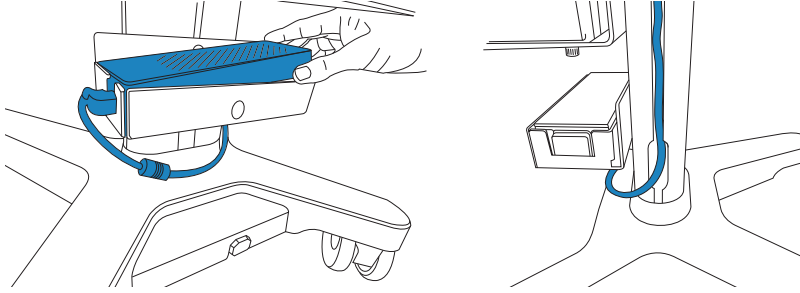
7. Use the 4 mm hex key secure the power supply tray with two M5 hex screws.



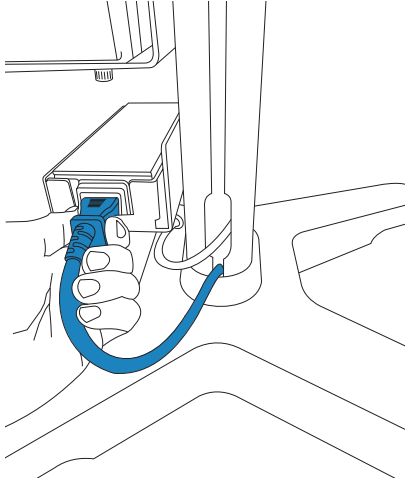
8. Connect the USB cable and run it up the channel in the side of the column. Then connect the power cable from the bottom of the stand to the printer. You may loop the cable to eliminate excess slack.



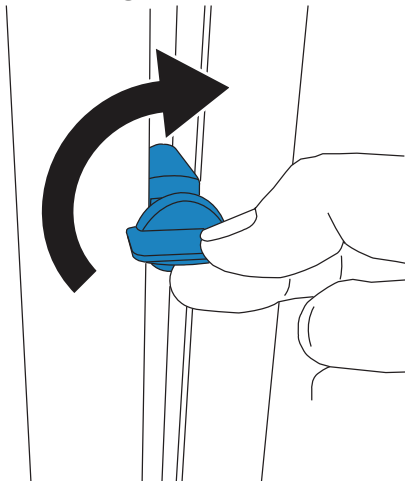
9. Place the power supply into the tray and then run the connected cable under the tray and up through the channel in the side of the stand.



10. Plug the shorter cable coming up through the stand into the power supply.

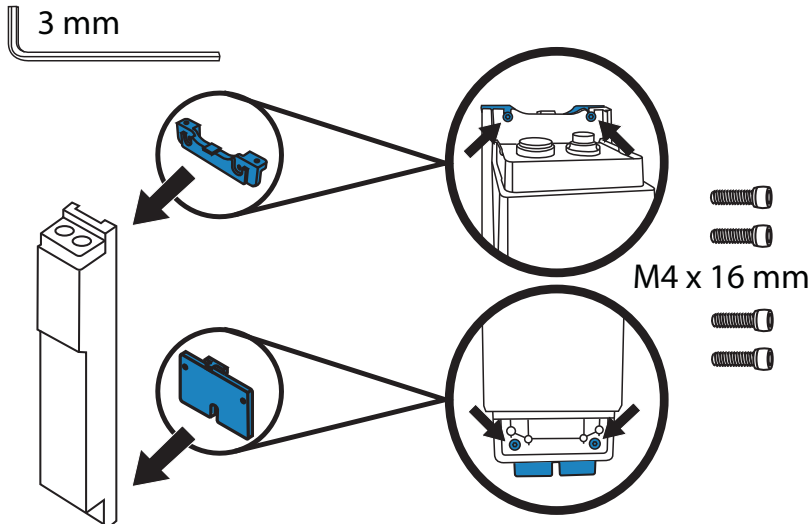


11. In both right and left channels, insert a cord catch and twist to lock it.

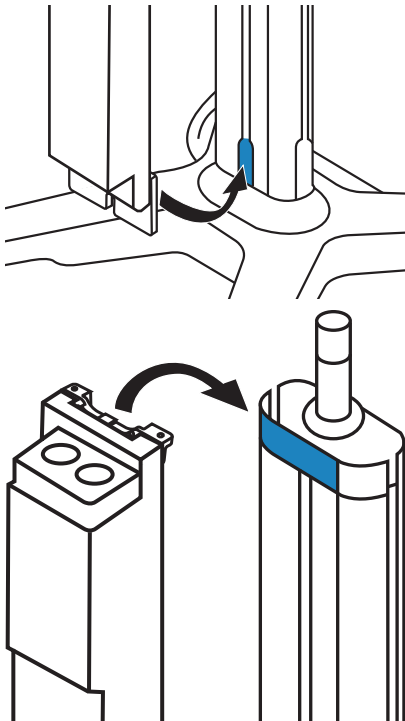


Install the stand battery (optional)

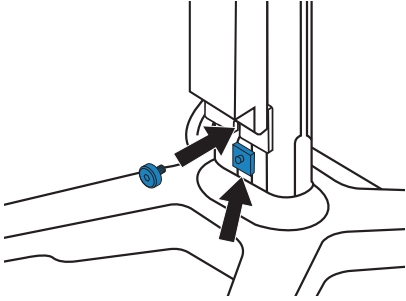
1. Place the battery on a flat surface and then slide the top and bottom battery mounts underneath. Use the 3 mm hex key and two M4 X 16 mm screws to secure the top of the battery to the top battery mount and then do the same for the bottom and bottom battery mount.



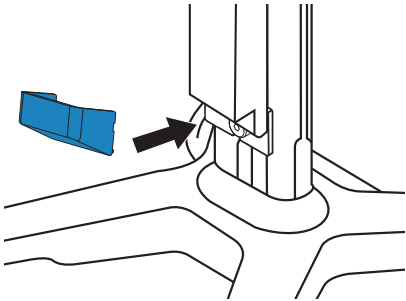
2. Slide the T of the bottom battery mount into the central channel on the front of the stand column. Raise the battery up until you can hook the top mount over the top edge of the stand column.



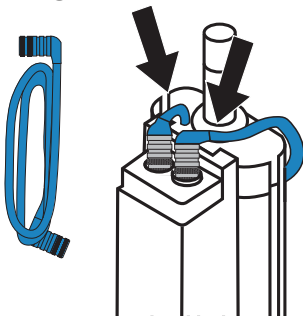
3. Slide the nut plate below the bottom mount and use the 4 mm hex key to tighten the M5 x 9 mm screw.



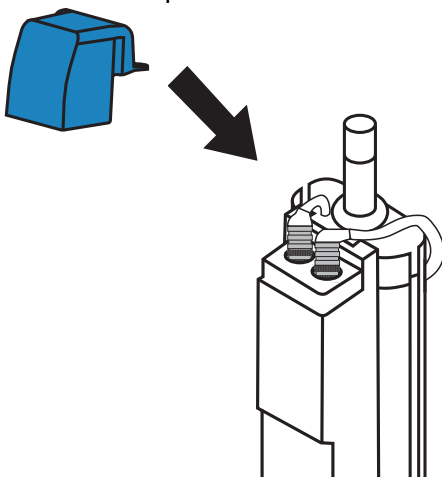
4. Install the bottom cover.



5. At the top of the battery, connect the power cable coming up through the column to the battery and then connect the other power cable to the top of the battery. Let the other end hang for now.

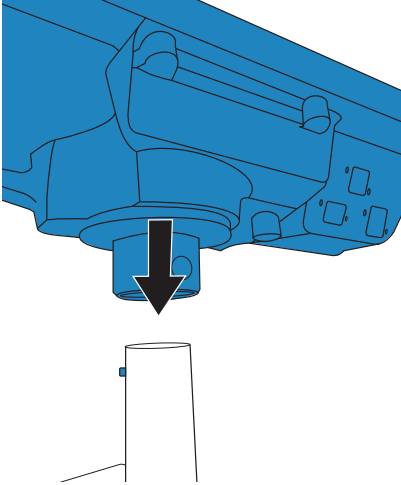


6. Install the top cover and use the 3 mm hex key to secure it with two M4 x 8mm screws.

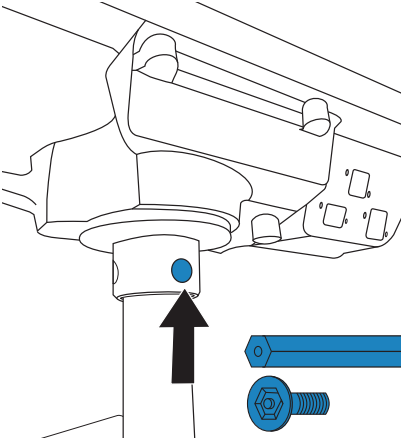


Install the stand head

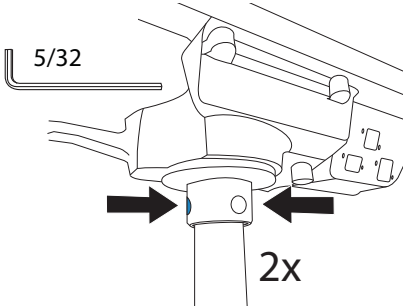
1. Install the stand head pedestal over the stand column post. Seat the pin on the post into the notch on the collar.



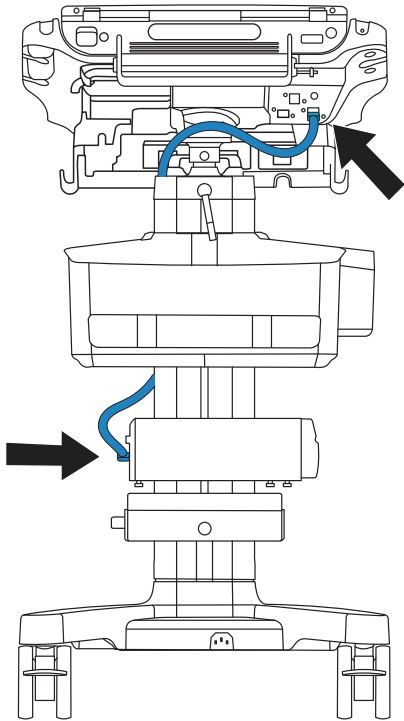
2. Use the security screw and 5/32 security hex key with the central hole to tighten the stand head to the post.



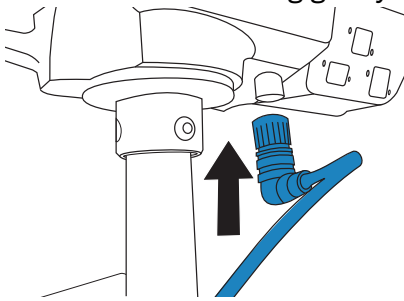
3. Use the same 5/32 hex key to tighten the two preinstalled screws in the collar.



4. If you have a printer, connect the USB cable between the printer and the stand head.

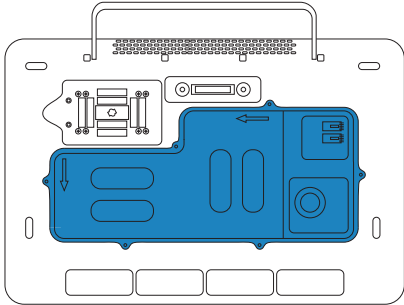


5. Connect the column power cable to the stand head by pushing it into place and screwing it into the connector. Tug gently to make sure it is secure.

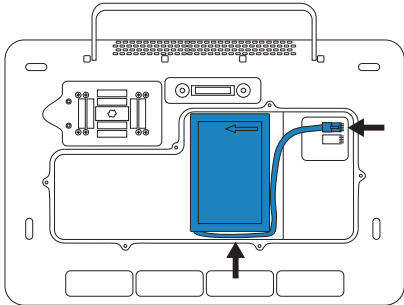


Install the system batteries

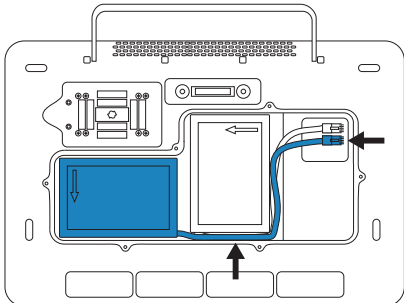
1. Unpack the system or engine and place it down on a flat surface. Access the battery compartment.



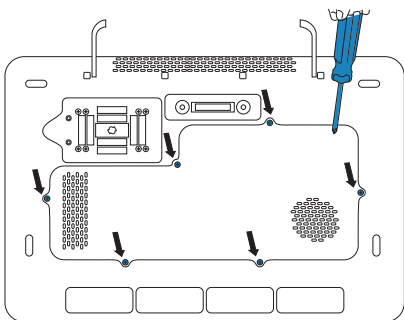
2. Place one of the batteries in the compartment as shown, then plug its cable into the connector. Make sure the cable is placed fully within the compartment.



3. Place the other battery in the compartment as shown, then plug its cable into the connector. Make sure the cable is placed fully within the compartment.

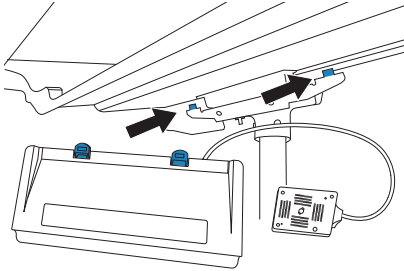


4. Attach the battery compartment cover using a Phillips screwdriver and the Phillips-head screws.

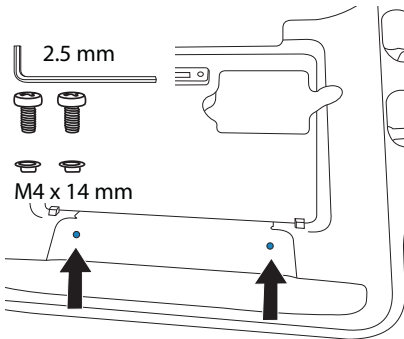


Install the triple transducer connector

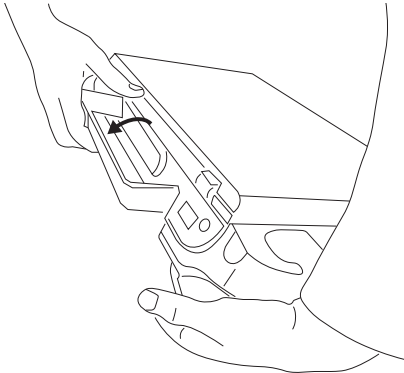
1. Hook the TTC onto the bracket underneath the stand head.



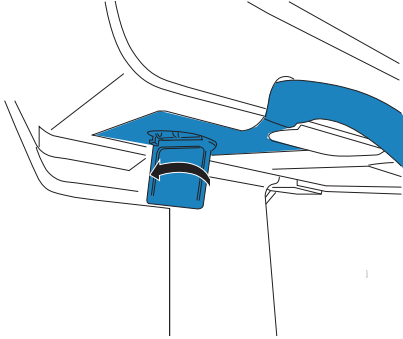
2. Insert screws, with insulating washers, through the screw holes in the stand head. Lift the TTC with your hand as you tighten the screws with the 2.5 mm hex wrench provided in the TTC installation kit.



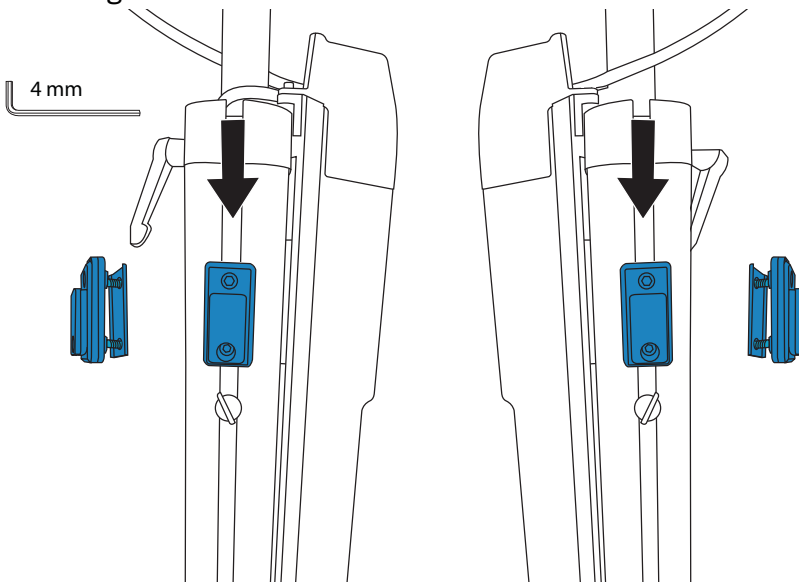
3. Before docking the system to the stand, make sure the system handle is rotated up.
4. Dock the system to the stand head and secure it by rotating the system handle down until it locks. The stand head has a security latch located on the back right. By default, this latch is spring-loaded in a closed position. When the system handle is rotated down, the security latch will lock automatically.



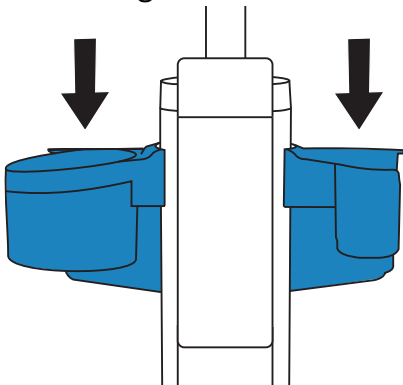
5. Connect the TTC connector to the system by placing the docking connector in the recess and turning the latch. Then fold the latch down.



6. Slide an accessory mount assembly (double nut pad, mount, and two screws) into either the left or right channel of the stand column. You will install one on each side.

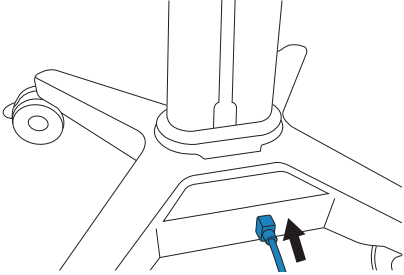


7. Slide the mount down until it is just below the top of the rear storage bin and then tighten both hex screws. Do this on both sides.
8. Install the gel holder on one side of the stand and the wipes holder on the other.

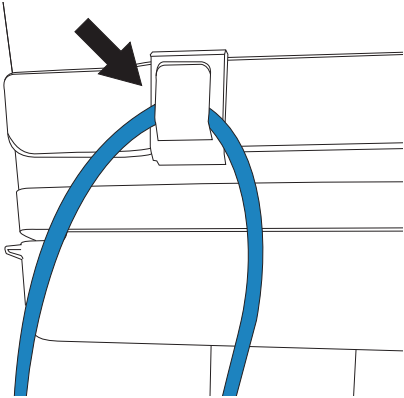


Connect the stand to power

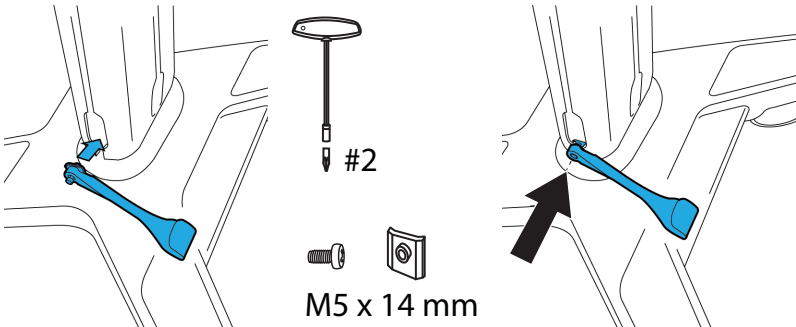
1. Connect AC power cord from the system box to the base of the stand.



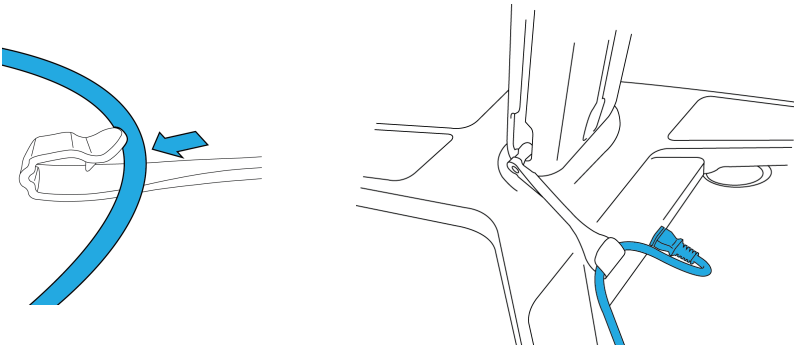
2. Run the AC power cord through the cord clip on the back of the storage tray. Alternatively, install the lower AC cord hook in the following steps. Both serve the same purpose. Wrap the cord if you need to wheel the system to an outlet.



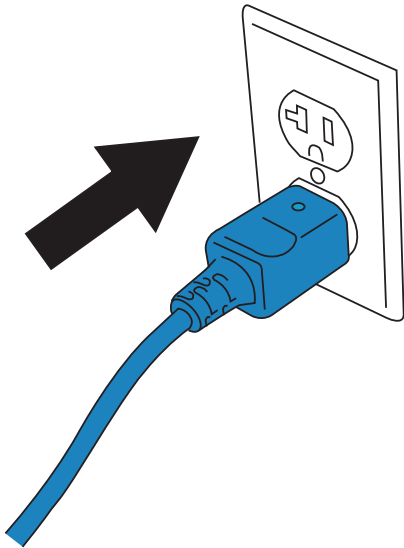
3. Install the AC cord hook on the same side as the power inlet.



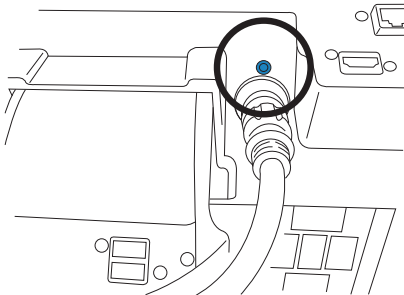
4. Use the the AC cord hook to retain the power cable.



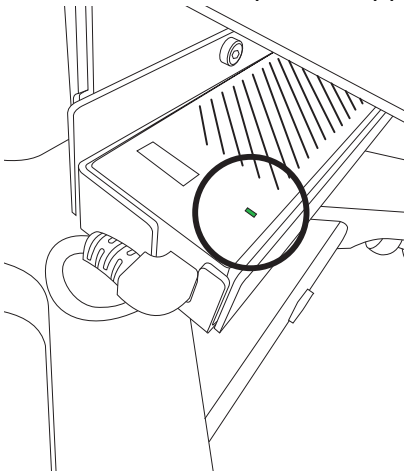
5. Connect the AC power cord to a hospital-grade AC mains outlet.



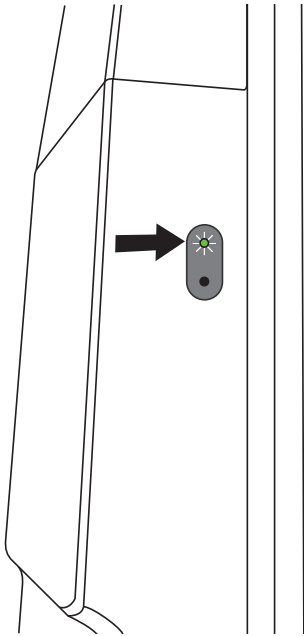
6. Make sure that the power status light on the rear of the stand head is on.



7. Make sure that the power supply status light is on.



8. If you have a stand battery, make sure the charging light is on



9. Allow the system to charge for six hours before using. This ensures the best battery life and user experience. The power status light will indicate a solid blue when fully charged.



FUJIFILM

SONOSITE

P27537-01

