

# Sonosite ECG Assembly Instructions

---

Manufacturer	EC Authorized Representative	Australia Sponsor
FUJIFILM SonoSite, Inc. 21919 30th Drive SE Bothell, WA 98021 USA T: 1-888-482-9449 or 1-425-951-1200 F: 1-425-951-1201	FUJIFILM SonoSite B.V. Joop Geesinkweg 140 1114 AB Amsterdam, The Netherlands	FUJIFILM SonoSite Australasia Pty Ltd 114 Old Pittwater Road BROOKVALE, NSW, 2100 Australia



# **CAUTION**

United States federal law restricts this device to sale by or on the order of a physician.

SonoMB, SONOSITE, Steep Needle Profiling, and the SONOSITE logo are trademarks and registered trademarks of FUJIFILM SonoSite, Inc., in various jurisdictions. FUJIFILM is a registered trademark of FUJIFILM Corporation in various jurisdictions. Value from Innovation is a trademark of FUJIFILM Holdings America Corporation. DICOM is a registered trademark of the National Electrical Manufacturers Association. All other trademarks are the property of their respective owners.

Patent: [www.sonosite.com/patents](http://www.sonosite.com/patents)



P28661-04

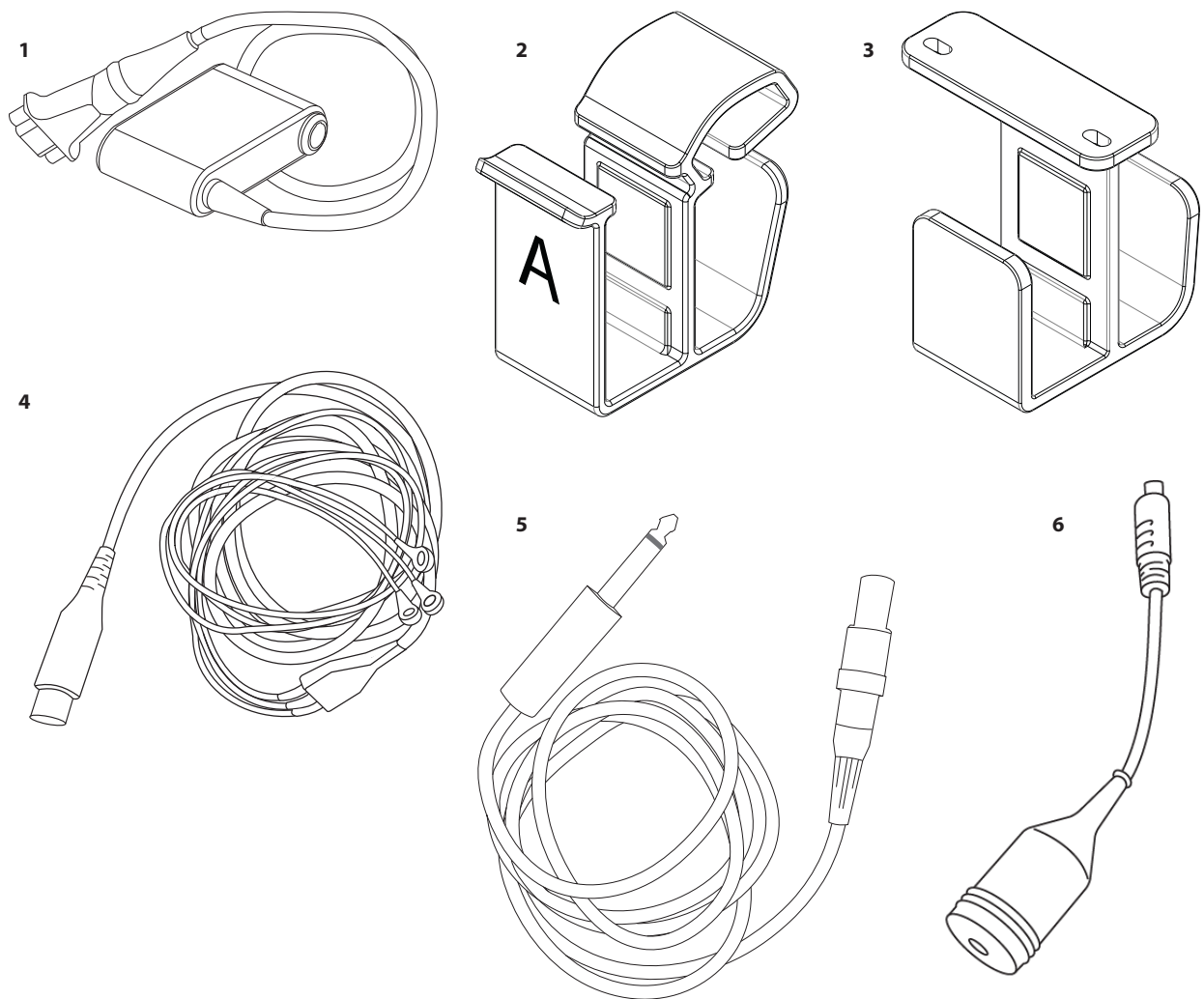
Published Jan 6, 2023

Copyright © 2023 FUJIFILM SonoSite, Inc. All rights reserved.

# Table of Contents

- Unpacking the boxes ..... 1
- Sonosite LX - Attach a clip to the system and insert the module ..... 2
- Sonosite PX and Sonosite ZX - Attach a clip to the system and insert the module ..... 3
- Connect a cable ..... 4

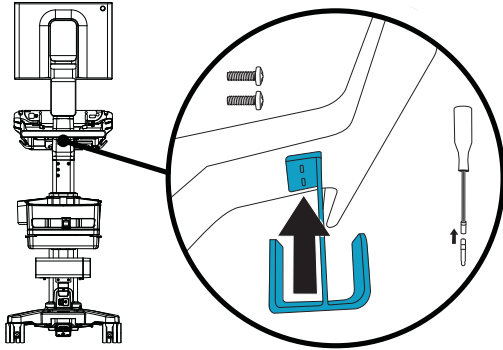
# Unpacking the boxes



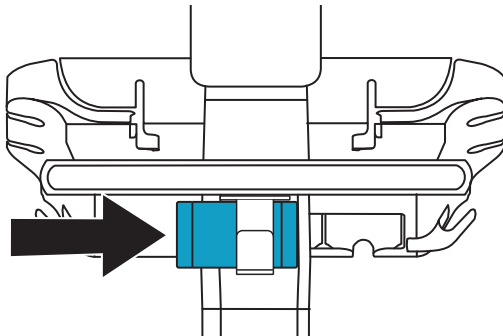
1.	FUJIFILM Sonosite ECG Module Sono-site and cable	4.	Sonosite FUJIFILM Sonosite ECG Module leadwire cable
2.	Sonosite PX and Sonosite ZX mounting clip	5.	External ECG Connector Cable for Philips Intellivue MP70
3.	Sonosite LX mounting clip	6.	GE adapter cable for <ul style="list-style-type: none"><li>• GE Solar 8000i</li><li>• GE TRAM-RAC 4A</li><li>• GE TRAM 451N</li></ul>

## Sonosite LX - Attach a clip to the system and insert the module

1. Remove the two screws under the rear handle and reinstall them with ECG mounting bracket B.

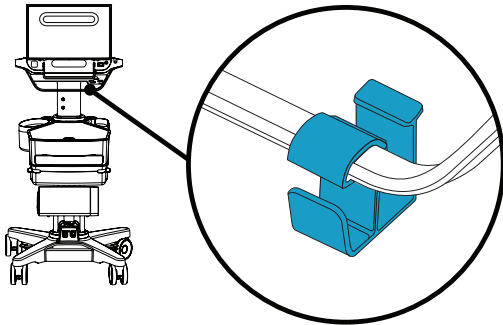


2. Insert the FUJIFILM Sonosite ECG Module into the rear, or stand side, of the mounting bracket. The front of the bracket is for cord storage.

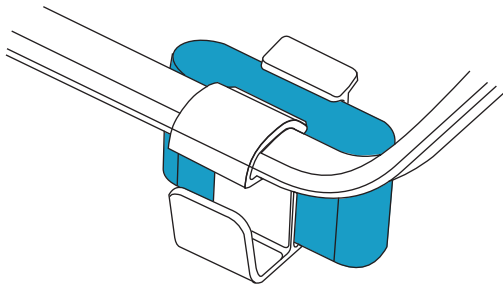


## Sonosite PX and Sonosite ZX - Attach a clip to the system and insert the module

1. Attach the ECG mounting bracket A to your ultrasound system. Slip the clip over the rear handle so the tallest part faces the rear of the ultrasound system.

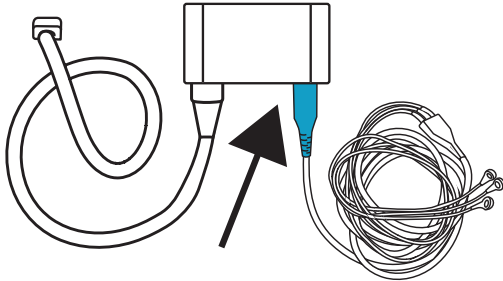


2. Insert the FUJIFILM Sonosite ECG Module into the rear, or stand side, of the mounting bracket. The front of the bracket is for cord storage.

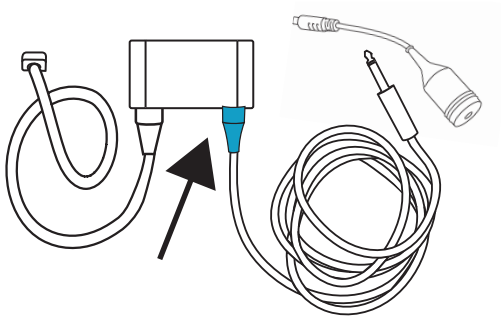


## Connect a cable

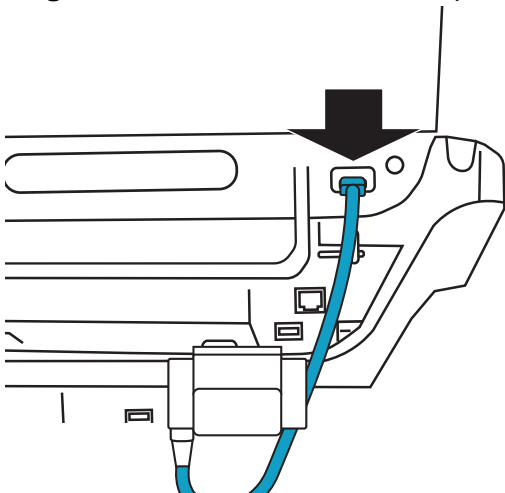
1. Do one of the following:
  - a. Connect the lead wire cable to the ECG Module.



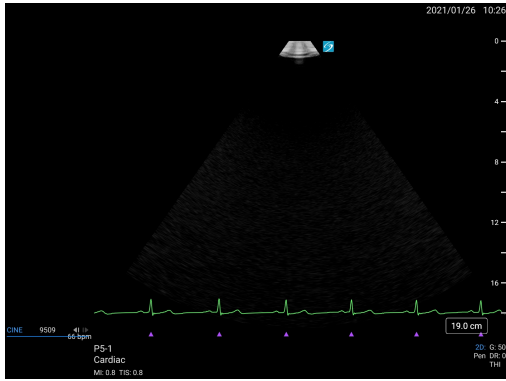
- b. Connect the external ECG connector cable to the ECG Module, and then do one of the following:



- Directly to the Philips ECG patient monitor
  - To the GE adapter cable and then to the GE patient monitor.
2. Plug the ECG Module into the ECG port on the rear of the ultrasound system.



3. Verify the proper display of the ECG signal on the ultrasound system. You must use a cardiac exam type.





# FUJIFILM

## SONOSITE

P28661-04

