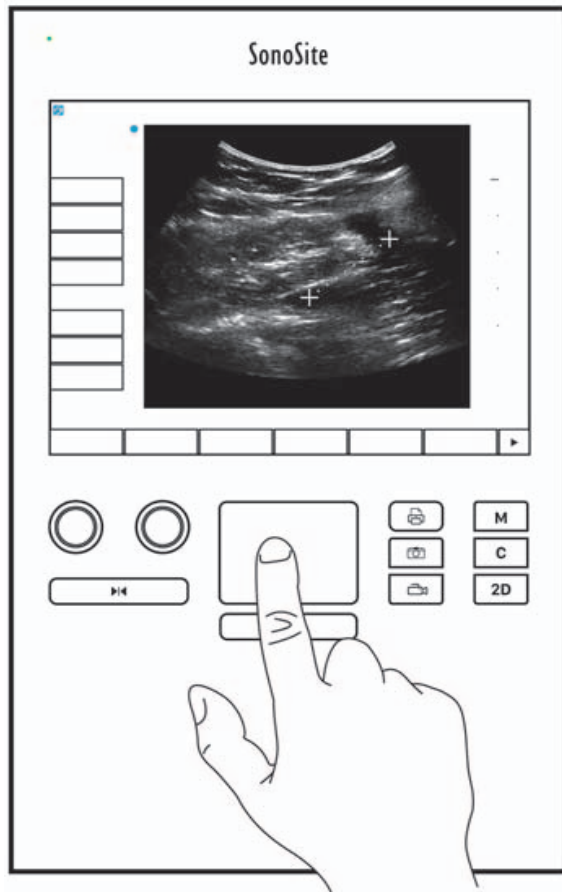
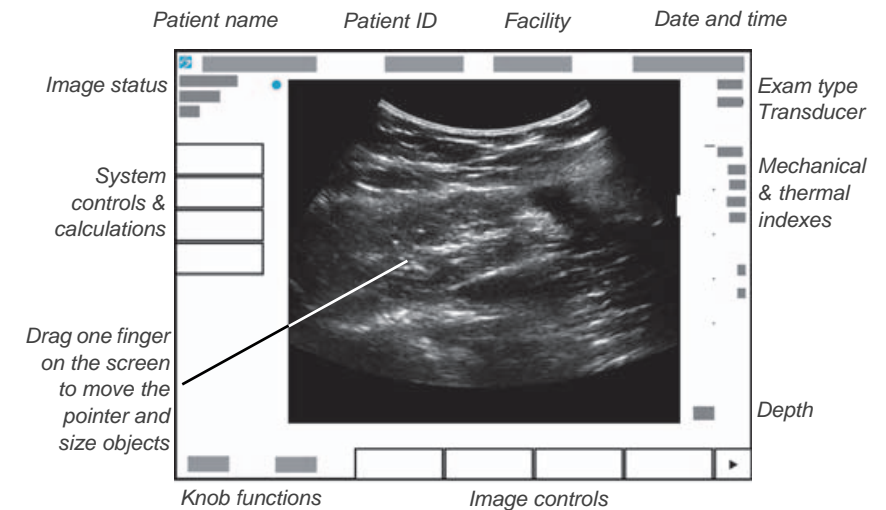


### Overview

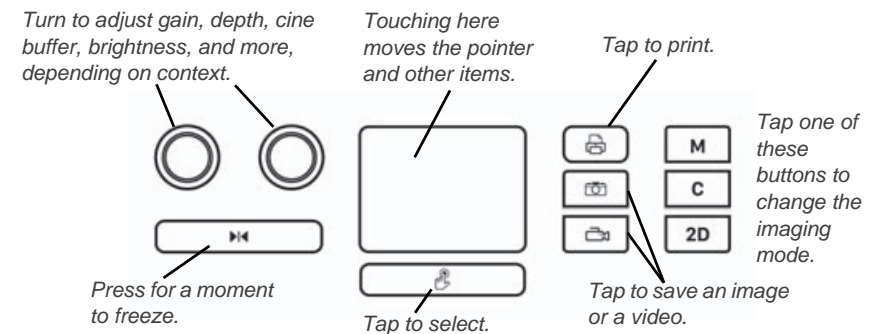
This Quick Reference Guide is for reference and refresh only and is not intended as a substitute for the User Guide that came with your SonoSite SII system. For detailed procedures, descriptions, features, and safety precautions, see the SonoSite SII User Guide, available at <http://www.sonosite.com>.



**Screen Controls** The controls that appear on the touchscreen change dynamically depending on the context. Only the controls that are available in the current mode or function will appear. To select a control on the touchscreen, tap it once.




**System controls** The buttons and knobs located below the touchscreen are persistent, but some may be disabled during certain modes or conditions. Controls are lighted when active and dark when disabled. The function of each knob may change depending on the mode or condition.



## Before Scanning

If a control you need does not appear on the screen, tap the More Controls

arrow  to show the next set of controls.

## Installing the battery

- 1 Ensure the ultrasound system is turned off.
- 2 At the back of the system, slide the four prongs on the end of the battery into the slots on the right side of the battery compartment.
- 3 Push the battery into the battery compartment and press until the latch engages.

## Connecting Transducers

- 1 On the transducer connector, pull the latch up, and rotate it clockwise.

- 2 Firmly seat the connector into a port on the back of the unit, near the bottom.



- 3 Turn the latch handle counterclockwise.



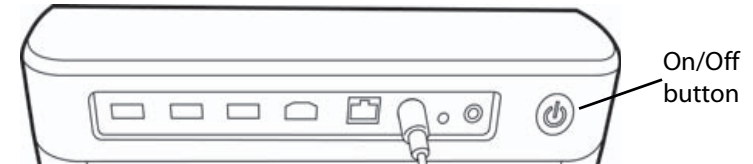
- 4 Secure the connector to the system by pressing the latch down.



## Before Scanning

### Turning on the system

- ❖ On the upper back of the system, press the On/Off button.



### Logging in

Login might not be required on your system.

- 1 Turn on the system
- 2 On the log in screen, type your user name and password.
- 3 Tap **OK**.

### Switching transducers

Only for systems with two transducers attached.

- 1 Tap **Transducer**.
- 2 Tap **Switch**.

### Choosing an exam type

Exam type availability depends on the transducer that is selected.



- 1 Tap **Transducer**.
- 2 Tap the exam type you want to use.

## Scanning

### Imaging modes

- ▶ **2D** (Default) – Basic 2D scanning mode
- ▶ **M Mode** – Displays motion within the 2D image. Commonly used to measure structures in the heart.
- ▶ **Color** – The area within the box displays blood flow in color. Commonly used to show the presence and direction of blood flow.

### Performing a basic scan


- 1 Turn on the system. The system starts in 2D mode.
- 2 Choose an imaging mode, and perform a scan.
- 3 Adjust controls to optimize the image and display features.
- 4 Save images and clips using the  and  buttons.

### Adjusting gain and depth

In scanning mode:

- ▶ Turn the left knob to adjust gain.
- ▶ Turn the right knob to adjust depth.

### Freezing and scrolling frames (cine)

- ▶ To freeze the image, press and hold  for a moment.
- ▶ Turn the left knob to scroll through the saved frames (cine buffer).  
The current frame number appears above the knob.

## Scanning

### Labeling an image

- 1 Tap **Annotate** and then tap one of the following:
  - ▶ **Label** - Enter text at the top of the form, or choose a standard label from the list.
  - ▶ **Picto** - Tap the pictograph number to scroll through the available pictographs.
  - ▶ **Arrow** - Move and rotate the arrow to point to a location.
- 2 Tap **Done**.

### Exporting studies to a USB memory stick

- 1 Insert a USB memory stick in a USB port.
- 2 On the patient list, select the studies you want to export.
- 3 Tap **Exp. USB**.
- 4 Select your USB device from the list and then tap **Export**.  
Do not remove the USB memory stick until the transfer is complete.

### Editing a patient information form

- 1 Tap **Patient**.
  - ▶ To open the form for the current study, tap **Information**.
  - ▶ To see a list of available studies, tap **List**.
- 2 Tap a form field to enter text.

### Creating a new patient information form

- 1 Tap **Patient**
- 2 Tap **End**.  
A new patient information form appears

## Measuring

### Measuring distance

- 1 On a frozen 2D image, tap **Calipers**.
- 2 Tap **Distance**.
- 3 Drag the caliper to the first point.
- 4 Drag the second caliper to the second point.

### Measuring an ellipse

- 1 On a frozen 2D image, tap **Calipers**.
- 2 Tap **Ellipse**.
- 3 Drag an ellipse caliper to one edge of the feature.
- 4 Drag the other ellipse caliper to the opposing edge of the feature.

### Measuring a shape

- 1 On a frozen 2D image, tap **Calipers**.
- 2 Tap **Trace**.
- 3 Drag the caliper to the start of the shape you want to trace.  
Lift your finger from the touchscreen to set the start location.
- 4 Drag the caliper to trace the shape of the feature.  
To make corrections, tap **Undo**.
- 5 Tap **Set** to complete the trace.

### Measuring heart rate

- 1 On a frozen M Mode trace, tap **Calipers**
- 2 Tap **HR**.
- 3 Drag the vertical caliper to the peak of the heartbeat.
- 4 Drag the second vertical caliper to the peak of the next heartbeat.

## Contact information

**Phone** (U.S. or Canada): 877-657-8118

**Phone** (Outside U.S. or Canada): 425-951-1330, or call your local representative

**Fax:** 425-951-6700

**E-mail:** [service@sonosite.com](mailto:service@sonosite.com)

**Web:** [www.sonosite.com](http://www.sonosite.com)

#### Manufacturer

**FUJIFILM SonoSite, Inc.**  
21919 30th Drive SE  
Bothell, WA 98021 USA  
T:1-888-482-9449 or  
1-425-951-1200  
F:1-425-951-1201

#### EC Authorized Representative

**FUJIFILM SonoSite B.V.**  
Joop Geesinkweg 140  
1114 AB Amsterdam,  
The Netherlands

#### Australia Sponsor

**FUJIFILM SonoSite  
Australasia Pty Ltd**  
114 Old Pittwater Road  
BROOKVALE, NSW, 2100  
Australia

SonoSite, SonoSite SII, and the SonoSite logo are trademarks or registered trademarks of FUJIFILM SonoSite, Inc. in various jurisdictions.

All other trademarks are the property of their respective owners.

Copyright© 2017 FUJIFILM SonoSite, Inc. All rights reserved.



P20556-02

