

FUJIFILM

SonoSite iViz

Mobility.  
Clarity.  
Connectivity.



Manufacturer

**FUJIFILM SonoSite, Inc.**  
21919 30th Drive SE  
Bothell, WA 98021 USA

T: 1-888-482-9449 or  
1-425-951-1200

F: 1-425-951-1201

FUJIFILM

SONOSITE, the SONOSITE logo and iVIZ are trademarks and registered trademarks of FUJIFILM SonoSite, Inc. in various jurisdictions. FUJIFILM is a trademark and registered trademark of FUJIFILM Corporation in various jurisdictions. All other trademarks are the property of their respective owners.

Copyright © 2015 FUJIFILM SonoSite, Inc. All rights reserved.

EC Authorized Representative

**Emergo Europe**  
Molenstraat 15  
2513 BH, The Hague  
The Netherlands



Read the *iViz User Guide* for important safety information.

SonoSite iViz

Australia Sponsor

**FUJIFILM SonoSite Australasia Pty Ltd**  
114 Old Pittwater Road  
BROOKVALE,  
NSW, 2100 Australia

CE  
CE 0086

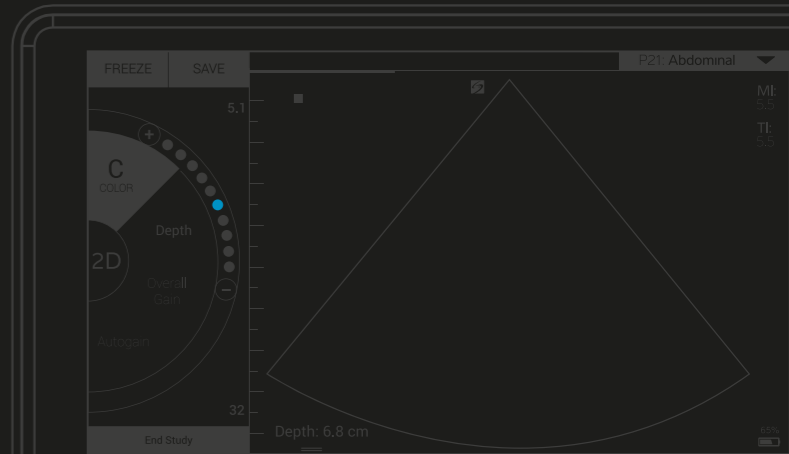
P20019-02



FUJIFILM

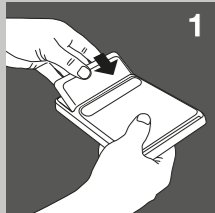
SonoSite iViz

Quick  
Start  
Guide



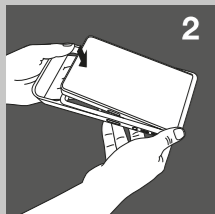
Box contents:

- 2-in-1 micro USB flash drive (64 GB)
- Protective case with handle and kick stand
- iViz battery
- USB charger
- Battery bay charger with power adapter



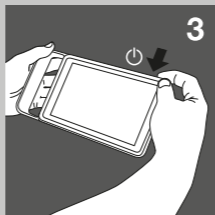
## 1 Install the battery

Insert the battery in the iViz system. For information about charging the battery, refer to the Getting Started chapter of the *iViz User Guide*.



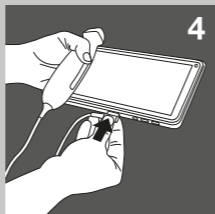
## 2 Put the system in the protective case

- Insert the system into one end of the case.
- Bring the opposite case ends over the system to hold it in place.



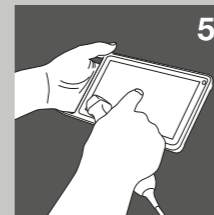
## 3 Turn on iViz for the first time

- Press the **Power** button, wait several seconds for iViz to power on, and then swipe up on the **Lock** icon.
- Tap **Learn** to see a list of iViz videos. Watch **Exploring iViz** for a quick tour of the system.
- Since iViz is unlike any other ultrasound system, we strongly recommend you also watch the other how-to videos.
- Make sure to set the correct date and time. Regularly check the date and time, especially after the system has not been used for over two weeks.



## 4 Connect the transducer

Insert the transducer connector into the bottom of the iViz system (make sure the transducer connector is pointing away from the other connectors) until you hear it click.

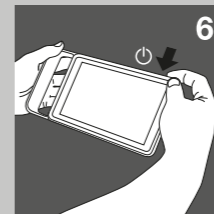


## 5 Explore iViz

From the iViz Home screen:

- Tap **Patient** to enter patient information or view the patient list.
- Tap **Scan** to start scanning.
- Tap **Learn** to watch the how-to videos or learn ultrasound techniques.

Refer to the Getting Started chapter of the *iViz User Guide* (located on the **Learn** module, the USB flash drive, and [www.sonosite.com](http://www.sonosite.com)) for information about general interaction and using gestures, such as pinch and zoom.



## 6 Turn off iViz

- Press and hold the **Power** button.
- When prompted, tap **Power off**, and then **OK**.  
To put iViz in Sleep mode, briefly press the **Power** button.

# SonoSite iViz