

# Sonosite LX

Optimal access. Unlimited potential.



Any patient. Anywhere. Anytime.

# See more. Do more. Sonosite LX

## Optimal access. Unlimited potential.

Sonosite LX is elevating clinicians' experience by making point-of-care ultrasound more inclusive and accessible in diverse environments. From the first touch, the user is welcomed to a truly exceptional heads-up workflow experience with its expansive touchscreen display that allows rotation and extension for collaboration with team members. Sonosite LX incorporates our most advanced image clarity. Brimming with educational potential, users of all levels are empowered to explore more than ever before.



## Image clarity elevated

Our largest image ever with elevated image clarity provides clinicians greater visualization and quicker access to touch controls.



## Heads-up workflow

With an optimized workflow on both the user-interface and touchscreen display, Sonosite LX helps clinicians at all levels to diagnose and treat patients efficiently and with confidence.



## Optimal access

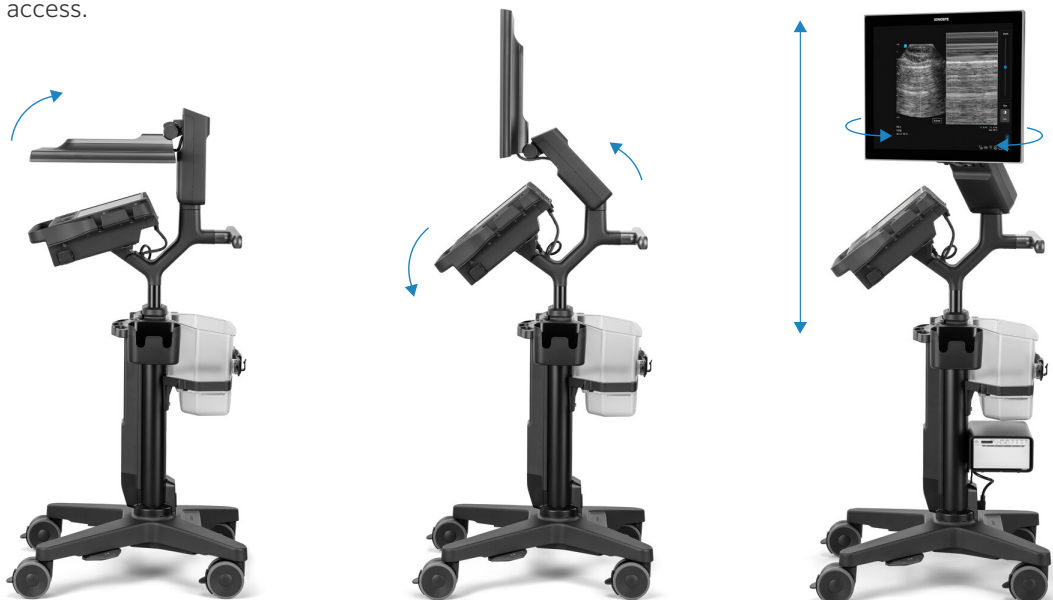
As accessibility is critical in crowded bays, the system is purposely designed with a small footprint, rotating and extending display, and vertically adjustable control panel to gain optimal bedside access.

### Adjustable height

Adjustable height and vertically adjustable control panel to gain optimal bedside access.

### Adaptable positioning

Expansive touchscreen display that rotates, tilts and extends for ease of viewing.



# Environment inspired

Sonosite LX offers accessibility with an optimal combination of our largest clinical display and an elevated heads-up workflow to improve time to diagnosis and treatment.

## Data management and connectivity

Wifi, Ethernet port, 1080p digital video output compatible with 1080p displays, (2) USB 2.0 ports, (2) USB 3.0 ports, (1) dedicated USB port for optional printer.

## Durable transducer holders

Integrated holders (no more cups) for simplified clean up and ease of use.

## Triple transducer connect

Three transducer ports so your most-used transducers are at the ready with the touch of a button.

## Versatile storage solutions

The flexible storage system adapts to left or right side needs—gel holder, wipes holder, storage bin, and lockable drawer to secure supplies.

## Cord management

Power cords are confined within the column to help prevent tangles.

## Cable management system

Cable catcher and hooks help prevent tangled transducer cables. Even at the lowest stand height, cables are less likely to drag on the floor.

## Low-profile wheeled base

The low-profile wheel base helps position the system close to the bedside.



## Peripheral accessories

### Barcode scanner

Save time by automatically linking patient data to the ultrasound scan. English only, where available.

### Barcode expressions

Auto-populate physician ID and patient information with customized software for your Sonosite Barcode Scanner. English only, where available.

### Sonosite ECG module

The 3-lead Sonosite ECG module connects directly to Sonosite LX ultrasound system through a dedicated ECG port. It allows the system to display an ECG trace on the clinical monitor. Includes ECG lead wire set.

### Medical grade printer

Add the optional Black and White Printer to print ultrasound studies.

### Needle guide starter kits

Improve positioning to help guide needles to an exact target on the first attempt.

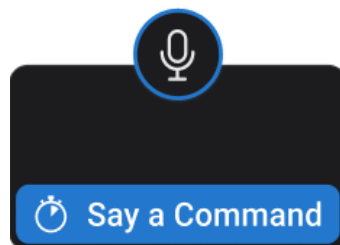
### PowerPark cordless charging station

Dock the system in a central location while the battery charges for cord-free use. Cord-free use eliminates power cords dragging on the floor, risking contamination. No power cords to clean and disinfect.



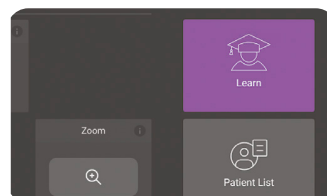
## Integrate medical informatics

Synapse Synchronicity workflow manager supports seamless credentialing, quality assurance, and billing. Compile data from all connected point-of-care ultrasound systems into a central location.



## Voice Assist

Hands free system controls for common modes and features providing you the ability to complete procedures without assistance or in a sterile environment.



## Education at your fingertips

Sonosite is dedicated to clinician education. More than 150 scan-along education tutorials are onboard for COVID-19, diagnosis, procedures, pathology, and system and transducer use.



## Rest assured with data security

Sonosite LX includes robust security features to keep patient information safe and networks secure. The system meets FIPS199, FIPS200, and NIST 800-53.

# Scan with confidence

Transducers designed and manufactured by Sonosite undergo rigorous testing in-house. Our transducers aren't only durable, they're also made for superior imaging in the most demanding environments.

- IPX7 rated for immersion\*
- Drop-tested to 1 meter
- Sonosite-manufactured transducers are covered by a Sonosite 5-year standard warranty

## Optional needle guide starter kit

- CIVCO Infiniti Plus™ In-Plane Ultrasound Needle Guide
- CIVCO AccuSITE™ Out-of-Plane Ultrasound Needle Guide
- CIVCO Disposable Endocavity Needle Guide

## Available Transducers



### C5-1 ●

**5-1 MHz Curved**

**Scan depth:** 4.7–30 cm

**Exam types:**

Abdomen, Procedural Abdomen, Gynecology, Lung, Musculoskeletal, Nerve, Early Obstetrics, Obstetrics, Spine, VExUS



### C10-3 ●

**10-3 MHz Curved**

**Scan depth:** 3–18 cm

**Exam types:**

Abdomen, Gynecology, Lung, Musculoskeletal, Nerve, Spine, VExUS



### P5-1

**5-1 MHz Phased**

**Scan depth:** 5–35 cm

**Exam types:**

Abdomen, Pediatric Abdomen, Cardiac, Pediatric Cardiac, Focused Cardiac, Lung, Obstetrics, Orbital, Transcranial Doppler (TCD), VExUS



### P11-3

**11-3 MHz Phased**

**Scan depth:** 2–15 cm

**Exam types:**

Neonatal and Pediatric Cardiac, Neonatal and Pediatric Lung, Neonatal and Pediatric Abdominal, Neonatal Cephalic



### L12-3 ●

**12-3 MHz Linear**

**Scan depth:** 1.5–9 cm

**Exam types:**

Arterial, Breast, Carotid, Lung, Musculoskeletal, Nerve, Ophthalmic, PIV, Superficial, Venous



### L13-6

**13-6 MHz Multi**

**Scan depth:** 1–6 cm

**Exam types:**

Musculoskeletal, PIV, Superficial, Venous



### L15-4 ●

**15-4 MHz Linear**

**Scan depth:** 1.5–6 cm

**Exam types:**

Arterial, Breast, Carotid, Musculoskeletal, Nerve, Superficial, Venous



### L19-5 ●●

**19-5 MHz Linear**

**Scan depth:** 1–6 cm

**Exam types:**

Arterial, Lung, Musculoskeletal, Nerve, Ophthalmic, PIV, Superficial, Vascular Access, Venous



### IC10-3 ●

**10-3 MHz Curved**

**Scan depth:** 3–15 cm

**Exam types:**

Gynecology, Early Obstetrics, Obstetrics, Prostate



### T8-3\*\*

**8-3 MHz Multi**

**Scan depth:** 4–18 cm

**Exam types:**

Cardiac, Cardiac Resuscitation, Lung

\* Protected against water immersion for 30 minutes at a depth of up to 1 meter.

\*\* 1-year warranty



## Anesthesia

### Procedural Support

Designed for the demands in regional anesthesia procedures and perioperative diagnostics and monitoring. As surgeons understand the value regional anesthesia offers the patient experience, being able to quickly perform procedures is key to saving valuable OR time. With simplified workflows, custom exam types, and quick access to the most used controls, clinicians can efficiently and confidently perform procedures.



## Critical Care

### Caring for the Critically ill Patients

For the critical care clinicians who are on the frontlines of sustaining life and ensuring a safe patient recovery, Sonosite LX helps clinicians better assess patient volume status during cardiac evaluations, with our simplified VExUS exam and analysis package. The optimized exam types and heads-up workflow will help clinicians quickly address the challenges of evaluating high-risk patients.



## Emergency Medicine

### An Inclusive Workflow

When time is of the essence and immediate answers are needed, Sonosite LX is a premium point-of-care ultrasound system that allows clinicians to do more and see more. For the clinicians who are bringing Transesophageal Ultrasound (TEU) to the bedside, our T8-3 transducer paired with the Cardiac Resuscitation exam type offers clinicians more visual acuity during critical moments.



## Musculoskeletal

### Confidently diagnose and treat patients in real-time.

Its elevated image clarity helps accurately visualize fine anatomical details with the aim to assist physicians to confidently diagnose and treat patients in real-time. The expansive touchscreen display with Sonosite's largest image ever provides an inclusive viewing experience to share findings with patients, offers a better patient experience, saves time and helps them get back to their lifestyles quickly.



### Why Sonosite LX:

Sonosite ensures the security and privacy of its devices as well as the integrity of patients' Protected Health Information (PHI). The Manufacturer Disclosure Statement for Medical Device Security (MDS2) provides us a way to communicate with you in a standardized language for security. Whenever a new cyber security vulnerability is identified, we'll keep you informed of any potential impact to Sonosite systems through updates on our website. Sonosite LX meets FIPS199, FIPS200, and NIST 800-53.

**FUJIFILM SONOSITE**  
Value from Innovation

#### FUJIFILM Sonosite, Inc.

Worldwide Headquarters  
21919 30th Drive SE, Bothell, WA 98021-3904  
Tel: +1 (425) 951 1200 or +1 (877) 657 8050  
Fax: +1 (425) 951 6800 [sonosite.com](http://sonosite.com)

#### FUJIFILM Sonosite BV

European Headquarters  
Joop Geesinkweg 140, 1114 AB Amsterdam, Netherlands  
Tel: +31 20 462 0000

#### Sonosite Worldwide Offices

FUJIFILM Sonosite Australasia Pty Ltd: Australia ..... 1300 663 516  
FUJIFILM Sonosite Australasia Pty Ltd: New Zealand .. 0800 888 204  
FUJIFILM Sonosite Canada Inc. .... +1 888 554 5502  
FUJIFILM Sonosite GmbH-Germany.....+49 69 80 88 40 30  
FUJIFILM Sonosite Iberica SL-Spain..... +34 91 123 84 51  
FUJIFILM Sonosite India Pvt Ltd.....+91 124 288 1100

FUJIFILM Sonosite Ltd-United Kingdom .....+44 1462 341 151  
FUJIFILM Sonosite SARL-France .....+33 182 880 702  
FUJIFILM Asia Pacific Pte. Ltd. ....+65 6383 9933  
FUJIFILM (China) Investment Co., Ltd .....+86 21 5010 6000  
FUJIFILM Medical Co., Ltd.-Japan .....+81 3 0418 7190  
FUJIFILM Middle East (FZE) .....+971 4 887 8722

**Any patient. Anywhere. Anytime.**

SONOSITE and the SONOSITE logo are registered and unregistered trademarks of FUJIFILM Sonosite, Inc. in various jurisdictions. FUJIFILM is a registered trademark of FUJIFILM Corporation in various jurisdictions. All other trademarks are the property of their respective owners.

Copyright © 2024 FUJIFILM Sonosite, Inc. All rights reserved. Subject to change.

MKT03597 Rev E 09/2024