

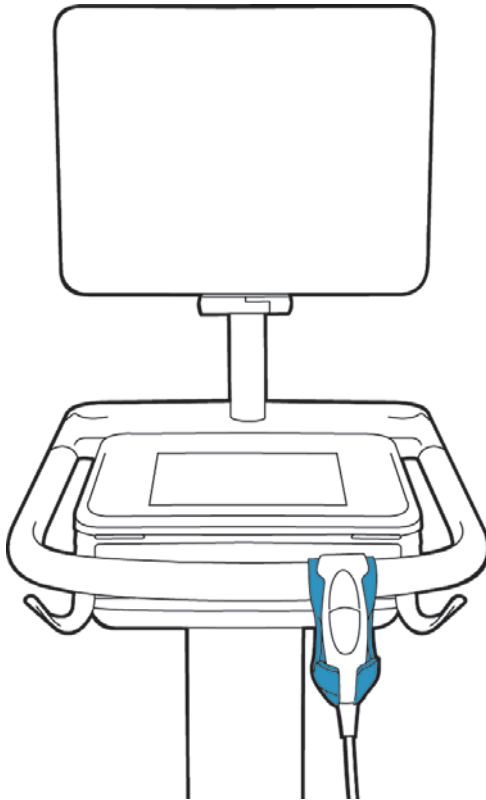
SonoSite X-Porte

Transducer Cup

Installation Instructions

FUJIFILM
Value from Innovation

SonoSite



Transducer cup installed on the front of the SonoSite X-Porte handle bar.

Package contents

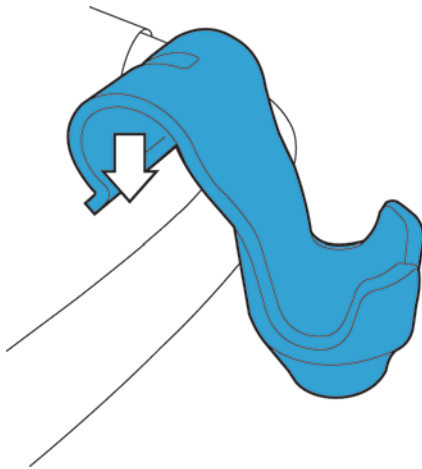


Transducer cup (1)

Installing the transducer cup

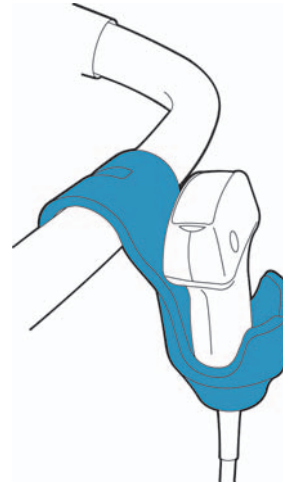
STEP 1

Press the transducer cup onto the stand handle bar.



STEP 2

Place the transducer into the cradle of the transducer cup.



X-Porte, SonoSite, and the SonoSite logo are trademarks or registered trademarks of FUJIFILM SonoSite, Inc. in various jurisdictions.

All other trademarks are the property of their respective owners.

Copyright© 2017 FUJIFILM SonoSite, Inc. All rights reserved.

Caution | Federal (United States) law restricts this device to sale by or on the order of a physician.

Manufacturer

FUJIFILM SonoSite, Inc.
21919 30th Drive SE
Bothell, WA 98021 USA
T: 1-888-482-9449 or 1-425-951-1200
F: 1-425-951-1201

EC Authorized Representative

Emergo Europe
Molenstraat 15
2513 BH, The Hague
The Netherlands

Australia Sponsor

FUJIFILM SonoSite
Australasia Pty Ltd
114 Old Pittwater Road
BROOKVALE, NSW, 2100
Australia



P21300-01

