

FUJIFILM Sonosite, Inc.21919 30th Dr. SE
Bothell, WA
98021-3904
USA**Tel:** 1.425.951.1200**Fax:** 1.425.951.1201

www.sonosite.com

Document Number:**D35815****Revision:****B****Title:****DICOM Conformance Statement (DCS) – Sonosite MT –
Version 110.80.120.112, Software BOM 1.2.20000222****CHANGE HISTORY:****Revision**

B	Correct transposed document number (clerical error)
A	Initial release, branched off of D25306 Rev. K DICOM Conformance Statement (DCS) – Sonosite PX, Sonosite LX, Sonosite ZX, Sonosite ST, Sonosite MT

D35815	Rev B	DICOM Conformance Statement (DCS) – Sonosite MT – Version 110.80.120.112, Software BOM 1.2.20000222	Page: 1 of 52
---------------	--------------	--	----------------------

This document contains confidential information that is proprietary to FUJIFILM Sonosite Inc. Neither the document nor the information contained therein should be disclosed or reproduced in whole or in part, without express written consent of FUJIFILM Sonosite Inc.

TABLE OF CONTENTS

1	INTRODUCTION	8
1.1	SOFTWARE IMPLEMENTATION INFORMATION	8
1.2	DICOM BACKGROUND.....	8
1.3	DEFINITIONS	8
1.4	REFERENCE DOCUMENTS	9
2	IMPLEMENTATION MODEL.....	10
2.1	APPLICATION DATA FLOW DIAGRAM	11
2.2	FUNCTIONAL DEFINITIONS OF AES	12
2.3	SEQUENCING OF REAL-WORLD ACTIVITIES.....	14
3	AE SPECIFICATIONS	16
3.1	STORE AE - SPECIFICATION	16
3.1.1	<i>Association Establishment Policies</i>	<i>16</i>
3.1.1.1	General.....	16
3.1.1.2	Number of Associations	16
3.1.1.3	Asynchronous Nature.....	16
3.1.1.4	Implementation Identifying Information	16
3.1.2	<i>Association Initiation by Real-World Activity.....</i>	<i>16</i>
3.1.2.1	Association Initiation by: Archive Exam	17
3.1.2.2	Association Initiation By: Image Acquisition	17
3.1.2.3	Association Initiation by: Review Archive	17
3.1.2.4	Association Initiation by: Get Status	17
3.1.3	<i>Proposed Presentation Contexts to an Archiver</i>	<i>18</i>
3.1.3.1	Verification SOP Class	19
3.1.3.2	Ultrasound Image Storage SOP Class	19
3.1.3.3	Ultrasound Multi-Frame Image Storage SOP Class	20
3.1.3.4	Secondary Capture Image Storage SOP Class.....	20
3.1.3.5	Basic Text SR Storage SOP Class	21
3.1.3.6	Comprehensive SR Storage SOP Class.....	21
3.1.4	<i>Common Composite Image IOD Modules</i>	<i>22</i>
3.1.4.1	Patient Module	22
3.1.4.2	General Study Module	23
3.1.4.3	Patient Study Module	24
3.1.4.4	General Series Module.....	24
3.1.4.5	General Equipment Module.....	25
3.1.4.6	SC Equipment Module.....	25
3.1.4.7	General Image Module	25
3.1.4.8	Image Pixel Module.....	27
3.1.4.9	Cine Module.....	27
3.1.4.10	Multi-frame Module.....	27
3.1.4.11	US Region Calibration Module	27
3.1.4.12	US Image Module.....	28
3.1.4.13	VOI LUT Module	29
3.1.4.14	SOP Common Module	29
3.1.4.15	SR Document Series Module	29
3.1.4.16	SR Document General Module.....	29
3.1.4.17	SR Document Content Module	30
3.1.5	<i>Store AE Behavior to C-Store Status.....</i>	<i>30</i>
3.2	STORAGE COMMITMENT AE – SPECIFICATION.....	30
3.2.1	<i>Association Establishment Policies</i>	<i>31</i>
3.2.1.1	General.....	31
3.2.1.2	Number of Associations	31
3.2.1.3	Asynchronous Nature.....	31
3.2.1.4	Implementation Identifying Information	31

D35815	Rev B	DICOM Conformance Statement (DCS) – Sonosite MT – Version 110.80.120.112, Software BOM 1.2.20000222	Page: 2 of 52
---------------	--------------	--	----------------------

This document contains confidential information that is proprietary to FUJIFILM Sonosite Inc. Neither the document nor the information contained therein should be disclosed or reproduced in whole or in part, without express written consent of FUJIFILM Sonosite Inc.

3.2.1.5	SCU Behavior.....	31
3.2.2	<i>Proposed Presentation Contexts to a Storage Commitment Server</i>	32
3.2.2.1	Storage Commitment Push Model SOP Class.....	32
3.2.2.2	Verification SOP Class	32
3.2.3	<i>Storage Commitment Attributes</i>	32
3.3	MODALITY WORKLIST AE – SPECIFICATION.....	33
3.3.1	<i>Association Establishment Policies</i>	33
3.3.1.1	General.....	33
3.3.1.2	Number of Associations	34
3.3.1.3	Asynchronous Nature.....	34
3.3.1.4	Implementation Identifying Information	34
	<i>Association Initiation by Real-World Activity</i>	34
3.3.1.5	Association Initiation by: Update Worklist.....	34
3.3.1.6	Association Initiation by: Worklist Query.....	34
3.3.1.7	Association Initiation by: Automatic Worklist Query	34
3.3.1.8	Association Initiation by: Get Status	34
3.3.2	<i>Proposed Presentation Contexts to a Worklist Server</i>	35
3.3.2.1	Modality Worklist Information Model – FIND SOP Class	35
3.3.2.2	Verification SOP Class	35
3.3.3	<i>Modality Worklist Attributes</i>	35
3.3.3.1	Broad Worklist Query Matching Key Attributes.....	35
3.3.3.2	Patient Based Query Matching Key Attributes.....	35
3.3.3.3	Return Key Attributes.....	36
3.3.4	<i>Worklist AE Behavior to C-FIND Status</i>	37
3.4	MODALITY PERFORMED PROCEDURE STEP (MPPS) AE – SPECIFICATION	37
3.4.1	<i>Association Establishment Policies</i>	38
3.4.1.1	General.....	38
3.4.1.2	Number of Associations	38
3.4.1.3	Asynchronous Nature.....	38
3.4.1.4	Implementation Identifying Information	38
3.4.2	<i>Proposed Presentation Contexts to an MPPS Server</i>	38
3.4.2.1	MPPS SOP Class.....	39
3.4.2.2	Verification SOP Class	39
3.4.3	<i>MPPS Information Model Attributes</i>	39
3.5	MEDIA EXPORT AE – SPECIFICATION	41
3.5.1	<i>Introduction</i>	41
3.5.2	<i>Implementation Model</i>	41
3.5.2.1	Application Data Flow	41
3.5.2.2	Functional Definition of the AE	41
3.5.2.3	Sequencing of Real-World Activities	42
3.5.2.4	File Meta Information Options (see PS 3.10)	42
3.5.3	<i>AE Specifications</i>	43
3.5.3.1	File Meta Information for the Application Entity	43
3.5.3.2	Real-World Activities.....	43
3.5.4	<i>Augmented and Private Application Profiles</i>	43
3.5.5	<i>Media Configuration</i>	44
3.5.6	<i>Media Storage SOP Class</i>	44
3.5.7	<i>Information Module Definitions</i>	45
3.5.7.1	File-set Identification Module.....	45
3.5.7.2	Directory Information Module	45
4	COMMUNICATION PROFILES	47
4.1	TCP/IP STACK	47
5	EXTENSIONS/SPECIALIZATIONS/PRIVATIZATIONS	48
5.1	PRIVATE TRANSFER SYNTAXES	48

D35815	Rev B	DICOM Conformance Statement (DCS) – Sonosite MT – Version 110.80.120.112, Software BOM 1.2.2000222	Page: 3 of 52
---------------	--------------	---	----------------------

This document contains confidential information that is proprietary to FUJIFILM Sonosite Inc. Neither the document nor the information contained therein should be disclosed or reproduced in whole or in part, without express written consent of FUJIFILM Sonosite Inc.

5.2	PRIVATE TAGS	48
5.3	PROPRIETARY ENCODINGS	49
5.3.1	<i>Image Type (0008,0008) Code String Values</i>	49
CONFIGURATION.....		50
5.4	AE TITLE/PRESENTATION ADDRESS MAPPING	50
5.5	CONFIGURABLE PARAMETERS.....	50
5.5.1	<i>Configurable Parameters per Network Location</i>	50
5.5.2	<i>Configurable Parameters per Remote Device Instance</i>	50
5.5.3	<i>Other Configurable Parameters</i>	51
6	SUPPORT OF EXTENDED CHARACTER SETS	52

D35815	Rev B	DICOM Conformance Statement (DCS) – Sonosite MT – Version 110.80.120.112, Software BOM 1.2.2000222	Page: 4 of 52
---------------	--------------	---	----------------------

This document contains confidential information that is proprietary to FUJIFILM Sonosite Inc. Neither the document nor the information contained therein should be disclosed or reproduced in whole or in part, without express written consent of FUJIFILM Sonosite Inc.

LIST OF FIGURES

Figure 2-1	Implementation Model.....	11
Figure 2-2	Sequencing Constraints - "During the Exam" Configuration	14
Figure 2-3	Sequencing Constraints - "End of Exam" Configuration	15
Figure 3-1	Media Export Data Flow	41
Figure 3-2	Directory Entity Relationship Diagram.....	44

LIST OF TABLES

Table 1-1	NETWORKING SERVICES	7
Table 3-1	Store AE SOP Class Support	16
Table 3-2	Store AE Proposed Presentation Contexts to an Archiver	18
Table 3-3	US Image IOD Modules	19
Table 3-4	US Multi-Frame Image IOD Modules	20
Table 3-5	SC Image IOD Modules	20
Table 3-6	Patient Module Attributes	22
Table 3-7	General Study Module Attributes	23
Table 3-8	Patient Study Module Attributes	24
Table 3-9	General Series Module Attributes	24
Table 3-10	General Equipment Module Attributes	25
Table 3-11	SC Equipment Module Attributes	25
Table 3-12	General Image Module Attributes	25
Table 3-13	Image Pixel Module Attributes	27
Table 3-14	Cine Module Attributes	27
Table 3-15	Multi-frame Module Attributes	27
Table 3-16	US Region Calibration Attributes	28
Table 3-17	US Image Module Attributes	28
Table 3-18	VOI LUT Module Attributes.....	29
Table 3-19	SOP Common Module Attributes	29
Table 3-20	Store AE Behavior to C-Store Status	30
Table 3-21	Storage Commitment AE SOP Class Support	31
Table 3-22	Storage Commitment AE Proposed Presentation Contexts	32
Table 3-23	Storage Commitment Request - Action Information	32
Table 3-24	Storage Commitment Result – Event Information.....	33
Table 3-25	Modality Worklist AE SOP Class Support	33
Table 3-26	Modality Worklist AE Proposed Presentation Contexts to a Worklist Server.....	35
Table 3-27	Broad Worklist Query Matching Key Attributes	35
Table 3-28	Patient Based Query Matching Key Attributes	35
Table 3-29	Return Key Attributes	36
Table 3-30	Worklist AE Behavior to C-FIND Status	37
Table 3-31	MPPS AE SOP Class Support.....	37
Table 3-32	MPPS AE Proposed Presentation Contexts.....	39
Table 3-33	MPPS SOP Class N-CREATE and N-SET Attributes.....	39
Table 3-34	SOP Classes and Transfer Syntaxes for Media Export.....	43
Table 3-35	Basic Directory IOD Modules	44
Table 3-36	File-Set Identification Module	45
Table 3-37	Directory Information Module.....	45
Table 3-38	PATIENT KEYS.....	45
Table 3-39	STUDY KEYS.....	46
Table 3-40	SERIES KEYS.....	46
Table 3-41	IMAGE KEYS	46

D35815	Rev B	DICOM Conformance Statement (DCS) – Sonosite MT – Version 110.80.120.112, Software BOM 1.2.20000222	Page: 6 of 52
This document contains confidential information that is proprietary to FUJIFILM Sonosite Inc. Neither the document nor the information contained therein should be disclosed or reproduced in whole or in part, without express written consent of FUJIFILM Sonosite Inc.			

Conformance Statement Overview

The Sonosite Ultrasound System implements the necessary DICOM services to download work lists from an information system, save acquired images to a network storage device and request storage commitment for them, inform an information system of exam status via MPPS, and store DICOM files onto removable media.

Table 1-1 provides an overview of the network services supported by the Sonosite Ultrasound System.

Table 1-1 NETWORKING SERVICES

NETWORKING SOP CLASSES	USER OF SERVICE (SCU)	PROVIDER OF SERVICE (SCP)
TRANSFER		
Ultrasound Image Storage	Yes	No
Ultrasound Multi-frame Image Storage	Yes	No
Secondary Capture Image Storage	Yes	No
Comprehensive SR Storage	Yes	No
Basic Text SR Storage	Yes	No
WORKFLOW MANAGEMENT		
Modality Worklist	Yes	No
Storage Commitment	Yes	No
Modality Performed Procedure Step	Yes	No
GENERAL		
Verification	Yes	Yes

Table 1-2 provides an overview of the media storage services supported by the Sonosite Ultrasound System.

Table 1-2 MEDIA STORAGE SERVICES

SOP CLASSES	ROLE
Media Storage Directory Storage	FSC
Ultrasound Image Storage	FSC
Ultrasound Multi-frame Image Storage	FSC
Comprehensive SR Storage	FSC
Basic Text SR Storage	FSC

1 INTRODUCTION

This document describes the Sonosite Ultrasound System’s conformance to the ACR-NEMA DICOM (Digital Imaging and Communications in Medicine) standard and satisfies the DICOM requirement for a vendor conformance specification.

The Sonosite system is an ultrasound imaging device. The DICOM options of the Sonosite system provide a means to query the Information System for scheduled procedures using Modality Worklist, send procedure status messages to RIS via MPPS, send images to storage servers and removable USB media, and request Storage Commitment for images stored to PACS.

Throughout this document DICOM storage servers will be referred to as archivers. For a device to be classified as an archiver it must be capable of receiving DICOM store commands. Archivers are primarily comprised of PACS.

This document is written with respect to ACR-NEMA DICOM version 3.

1.1 SOFTWARE IMPLEMENTATION INFORMATION

Product Release Name	Software BOM	System Firmware Version
Sonosite MT 1.2	1.2.20000222	110.80.120.112

1.2 DICOM BACKGROUND

The DICOM information exchange specification provides a definitive structure of commands and information that allow for the inter-communication of medical imaging devices. Developed by the American College of Radiology (ACR) and the National Electrical Manufacturers Association (NEMA), the DICOM standard strives to promote communication of image information through the use of a standardized set of command classes and information semantics.

The DICOM standard defines classes of information that are common to many modalities of medical imaging. However, to meet the specific needs of information content for such a diverse range of information, the DICOM specification defines structures for a multitude of medical data. To alleviate the need for applications to implement every aspect of the DICOM specification, a list of conformance tables for every modality was created to define the minimum set of information necessary for data exchanges. A requirement of the DICOM specification is to maintain a compliance document that outlines a subset of DICOM services and data classes that are supported by a device. The purpose of this document is to define a subset of DICOM for the exchange of information with the Sonosite system via its DICOM feature.

1.3 DEFINITIONS

AE	Application Entity
ANSI	American National Standards Institute
BOM or BoM	Bill of Materials
CDA	Clinical Document Architecture
CW	Continuous Wave
DICOM	Digital Imaging and Communications in Medicine
DIMSE	DICOM Message Service Element

D35815	Rev B	DICOM Conformance Statement (DCS) – Sonosite MT – Version 110.80.120.112, Software BOM 1.2.20000222	Page: 8 of 52
---------------	--------------	--	----------------------

This document contains confidential information that is proprietary to FUJIFILM Sonosite Inc. Neither the document nor the information contained therein should be disclosed or reproduced in whole or in part, without express written consent of FUJIFILM Sonosite Inc.

FSC	File Set Creator
HIS	Hospital Information System
IE	Information Entity
IOD	Information Object Definition
kHz	Kilohertz
LUT	Look Up Table
MPPS	Modality Performed Procedure Step
PACS	Picture Archive and Communication System
PW	Pulsed Wave
PDU	Protocol Data Unit
PPS	Performed Procedure Step
RGB	Red, Green, Blue
RIS	Radiology Information System
SC	Secondary Capture
SCU	Service Class User (Client)
SCP	Service Class Provider (Server)
SOP	Service – Object Pair
SPS	Scheduled Procedure Step
SR	Structured Report
TCP/IP	Transmission Control Protocol/Internet Protocol
UID	Unique Identifier
US	Ultrasound
USB	Universal Serial Bus
UTC	Coordinated Universal Time
VOI	Value Of Interest
VR	Value Representation

1.4 REFERENCE DOCUMENTS

ACR-NEMA DICOM Standard

D35815	Rev B	DICOM Conformance Statement (DCS) – Sonosite MT – Version 110.80.120.112, Software BOM 1.2.20000222	Page: 9 of 52
This document contains confidential information that is proprietary to FUJIFILM Sonosite Inc. Neither the document nor the information contained therein should be disclosed or reproduced in whole or in part, without express written consent of FUJIFILM Sonosite Inc.			

2 IMPLEMENTATION MODEL

The Sonosite DICOM feature incorporates the DICOM standard for image storage, MPPS, Storage Commitment, and Modality Worklist functions. Scheduled Procedures are queried from the HIS/RIS Worklist SCP and presented to the operator for selection. At the beginning and end of a procedure, MPPS messages are sent to the information system relaying the exam status. Performed Procedures¹ are transferred from the ultrasound system using standard network connections to be stored on a DICOM compatible archiver. Upon completion of image transfer, Storage Commitment is requested for transferred images.

The behavior of how images are sent depends on which Transfer Images setting is selected during DICOM setup of locations. Two selections are offered, "During the exam" (in-progress transfer mode) or "End of exam" (batch transfer mode).

For batch transfer mode, the system allows up to four archivers and one Worklist server to be selected at any given time. The devices are selected using DICOM Setup mode with all selected archive devices being placed into a destination list.

For in-progress transfer mode, the system allows only one archive device and one Worklist server to be selected at any given time. Like batch transfer mode, the devices are selected using DICOM Setup mode with all selected devices annotated in the destination list.

A maximum of 200 Scheduled Procedures Steps may be queried from the selected Modality Worklist SCP. The Worklist is persisted to non-volatile memory so that it can be accessed during portable exams. Both manual and automatic queries are supported. Automatic queries are user configurable and are performed in the background at periodic intervals.

During an exam all saved images are written to internal storage. For batch transfer mode, when the exam completes all images associated with it are marked as Archive Pending for transfer to each device in the current destination list. If a network connection is present then transfer begins immediately.

Performed Procedures are Archived to devices in the destination list sequentially, starting with the first selected archiver and ending with the last selected archiver. Exam images are sent to each destination device in batch transfer mode; an association is opened, all exam images are transferred in acquisition order, and the association is closed. Once an exam is successfully transferred to a device then all images in the exam are marked as Archive Complete to that destination and Storage Commitment is requested for the images. Archiving then continues with the next device in the destination list. Once all devices in the destination list have successfully received each exam image then the Exam Archive is complete.

If an archiver is configured to receive Basic Text Structured Reports or Comprehensive Structured Reports, those documents are transferred at the end of each exam.

For in-progress transfer mode, images are transferred immediately after acquisition, followed by request for Storage Commitment, provided there is a network connection present.

When a Get Status is performed the current destination list is used in the same manner as with Exam Archive. For batch transfer mode, the devices are accessed sequentially, starting with the first selected archiver and ending with the last selected Storage Commitment server. For each device an association is opened, status is returned, and the association is closed. Status is obtained from archiver, MPPS, Storage Commitment and Worklist devices using DICOM Verify (C-Echo). Once status is successfully returned from all devices in the destination list then Get Status is complete.

¹ Performed Procedures may consist of single or multi-frame images, or reports.

D35815	Rev B	DICOM Conformance Statement (DCS) – Sonosite MT – Version 110.80.120.112, Software BOM 1.2.20000222	Page: 10 of 52
This document contains confidential information that is proprietary to FUJIFILM Sonosite Inc. Neither the document nor the information contained therein should be disclosed or reproduced in whole or in part, without express written consent of FUJIFILM Sonosite Inc.			

When a Get Status is performed during in-progress transfer mode, the archive device association is opened if closed, a C-Echo Request is issued and the C-Echo response status is reported. The association remains open while in DICOM Setup mode. Once DICOM Setup mode is exited the rules used for image acquisition apply to closing the association. This behavior allows an in-progress transfer with an open association to remain open through the Get Status process and allows subsequent image acquisition to be sent on the same association when acquisition constraints are met.

One or more completed exams may be selected from the exam list to have their images saved as DICOM files to the selected USB medium.

The user may choose to “Append” a completed exam. This is treated as a new Series in the same Study as the original exam. The appended exam shows up as a separate line item in the Patient List form.

2.1 APPLICATION DATA FLOW DIAGRAM

The diagram in Figure 2-1 represents the relationship between the ultrasound system’s real-world activities (circles on the left), the local AEs built into Sonosite system (boxes in the center), and the remote AEs built into the devices it communicates with using DICOM (boxes on the right).

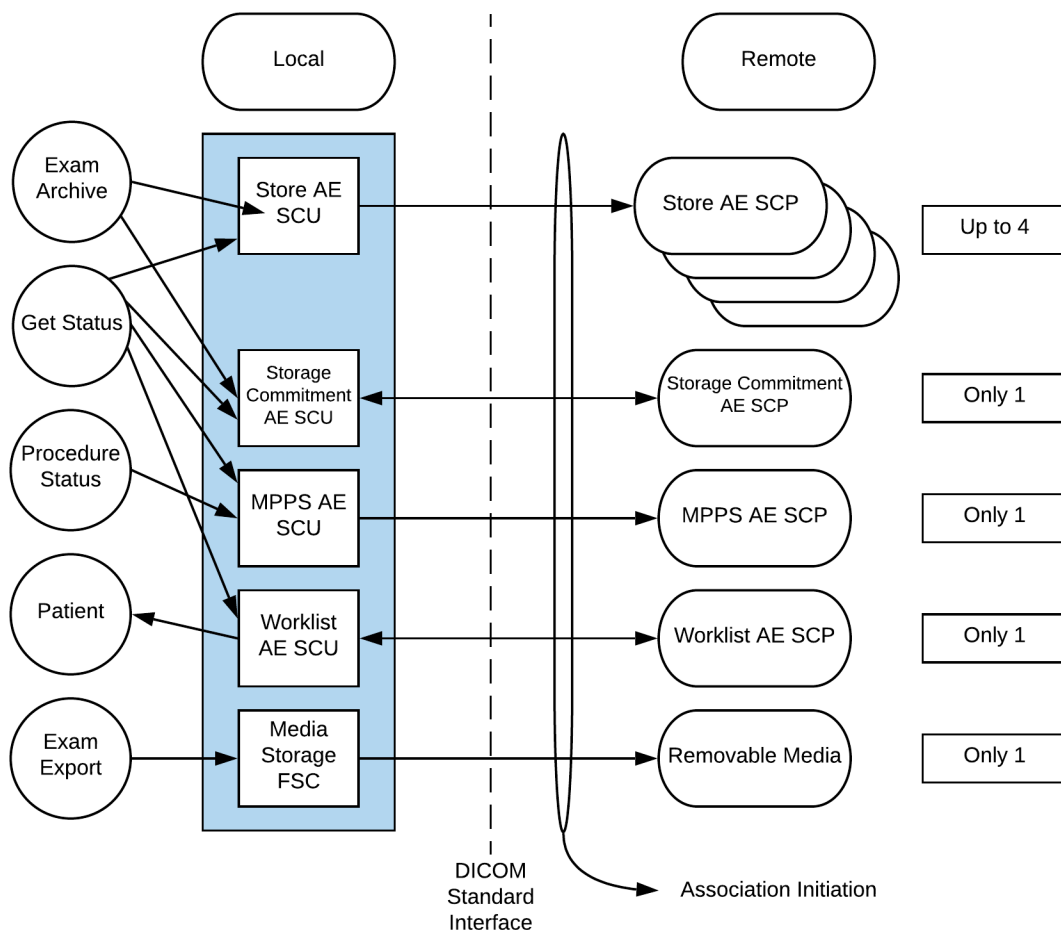


Figure 2-1 Implementation Model

D35815	Rev B	DICOM Conformance Statement (DCS) – Sonosite MT – Version 110.80.120.112, Software BOM 1.2.20000222	Page: 11 of 52
---------------	--------------	--	-----------------------

This document contains confidential information that is proprietary to FUJIFILM Sonosite Inc. Neither the document nor the information contained therein should be disclosed or reproduced in whole or in part, without express written consent of FUJIFILM Sonosite Inc.

The following are the conditions that invoke real-world activities associated with AEs.

Exam Archive

- For batch transfer mode, End Exam with one or more images saved on internal storage. Exam end occurs when End Study is pressed or when Patient setup mode is entered and any of the patient fields are changed and the changes are committed.
- For in-progress transfer mode after an image acquisition is complete. Image acquisition occurs after Save is pressed for single images or Save Clip is pressed for clips.
- System startup with one or more images flagged as Archive Pending.
- Upon completion of image transfer, Storage Commitment is requested for transferred images and reports.

Get Status

- Operator Verify command in DICOM Setup mode.

Procedure Status

- User starts a new procedure, thereby setting the procedure step to IN PROGRESS. Upon procedure completion status is set to COMPLETE or DISCONTINUED.

Patient

- User enters Patient Setup screen, enters search criteria, and presses Query or user enters Worklist screen and presses Update. The Worklist screen is entered and a list of matching Scheduled Procedures Steps are returned and displayed.

Exam Export

- User selects one or more completed exams from the exam list and the images and reports for those exams are written to the selected removable media.

2.2 FUNCTIONAL DEFINITIONS OF AEs

Store

This AE handles sending ultrasound images and reports to an archiver using the DICOM store SCU services.

Steps taken to Get Archiver Status:

```
A-ASSOCIATE
C-ECHO command
A-RELEASE
```

Steps taken to Send Exam to Archiver, batch transfer mode:

```
A-ASSOCIATE
for each exam image or report
{
    C-STORE Image SOP Instance
}
A-RELEASE
```

Steps taken to Send Exam to Archiver, in progress transfer mode:

```
A-ASSOCIATE
for each image or clip acquired that has not been transferred yet
{
    C-STORE Image SOP Instance
}
A-RELEASE
```

D35815	Rev B	DICOM Conformance Statement (DCS) – Sonosite MT – Version 110.80.120.112, Software BOM 1.2.20000222	Page: 12 of 52
This document contains confidential information that is proprietary to FUJIFILM Sonosite Inc. Neither the document nor the information contained therein should be disclosed or reproduced in whole or in part, without express written consent of FUJIFILM Sonosite Inc.			

Storage Commitment

This AE handles the requesting of storage commitment for objects sent to an archiver using the DICOM Storage Commitment (Push Model) SCU services.

Steps taken to get Storage Commitment SCP Status:

- A-ASSOCIATE
- C-ECHO command
- A-RELEASE

Steps taken to send list of SOP Instances for commitment request:

- A-ASSOCIATE
- N-ACTION commitment request
- A-RELEASE

Steps taken to receive list of committed SOP Instances (role reversal):

- A-ASSOCIATE
- N-EVENT-REPORT commitment response
- A-RELEASE

Worklist

This AE handles querying a Worklist SCP for a list of scheduled procedures using the DICOM Modality Worklist SCU services.

Steps taken to Get Worklist Status:

- A-ASSOCIATE
- C-ECHO command
- A-RELEASE

Steps taken to Query a Worklist SCP:

- A-ASSOCIATE
- SEND C-FIND Request command
- {
 - RECEIVE C-FIND Response
- } While C-FIND status == pending AND responses <= 200

A-RELEASE

Modality Performed Procedure Step

This AE handles sending procedure status to an MPPS SCP using the DICOM MPPS SCU services.

Steps taken to get MPPS SCP Status:

- A-ASSOCIATE
- C-ECHO command
- A-RELEASE

Steps taken to send IN PROGRESS status at start of procedure:

- A-ASSOCIATE
- N-CREATE MPPS SOP Instance
- A-RELEASE

Steps taken to send COMPLETE or DISCONTINUED at end of procedure:

- A-ASSOCIATE

D35815	Rev B	DICOM Conformance Statement (DCS) – Sonosite MT – Version 110.80.120.112, Software BOM 1.2.20000222	Page: 13 of 52
---------------	--------------	--	-----------------------

This document contains confidential information that is proprietary to FUJIFILM Sonosite Inc. Neither the document nor the information contained therein should be disclosed or reproduced in whole or in part, without express written consent of FUJIFILM Sonosite Inc.

2.3 SEQUENCING OF REAL-WORLD ACTIVITIES

All real world activities that initiate communication to remote AEs operate asynchronously with respect to each other and Workflow activities.

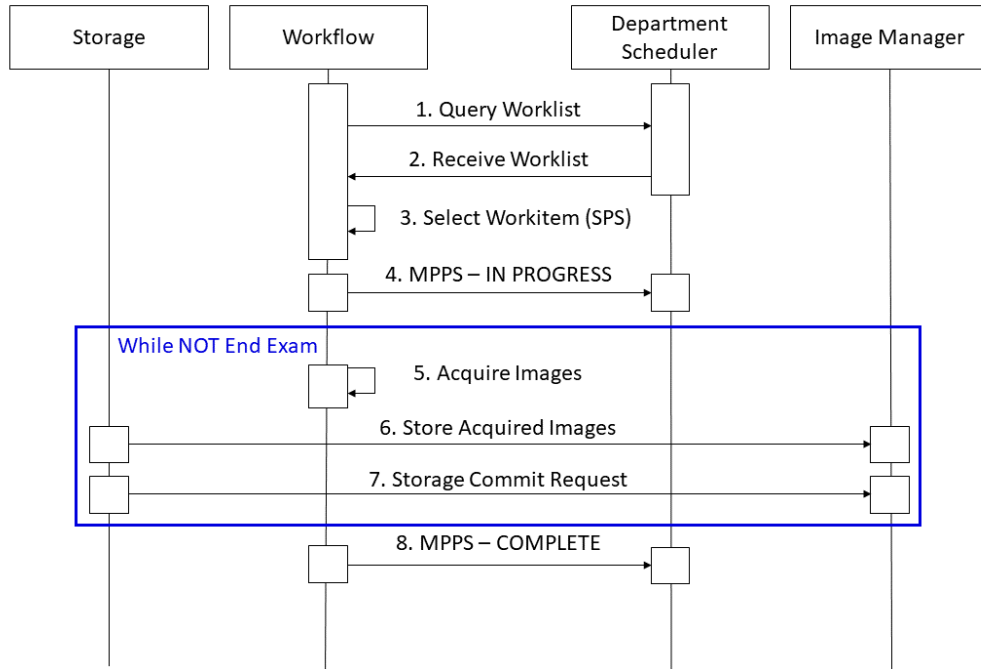


Figure 2-2 Sequencing Constraints - "During the Exam" Configuration

Under normal scheduled workflow conditions the sequencing constraints illustrated apply:

1. Worklist Query is initiated.
2. List of Scheduled Procedure Steps (SPS) are returned.
3. SPS item is selected from the Worklist and the Exam begins.
4. MPPS IN PROGRESS message sent.
5. Image or Clip is acquired.
6. Association is opened with the Image Manager and the acquired image is stored.
7. Storage Commitment is requested for sent objects.
8. MPPS COMPLETED (or DISCONTINUED) message sent.

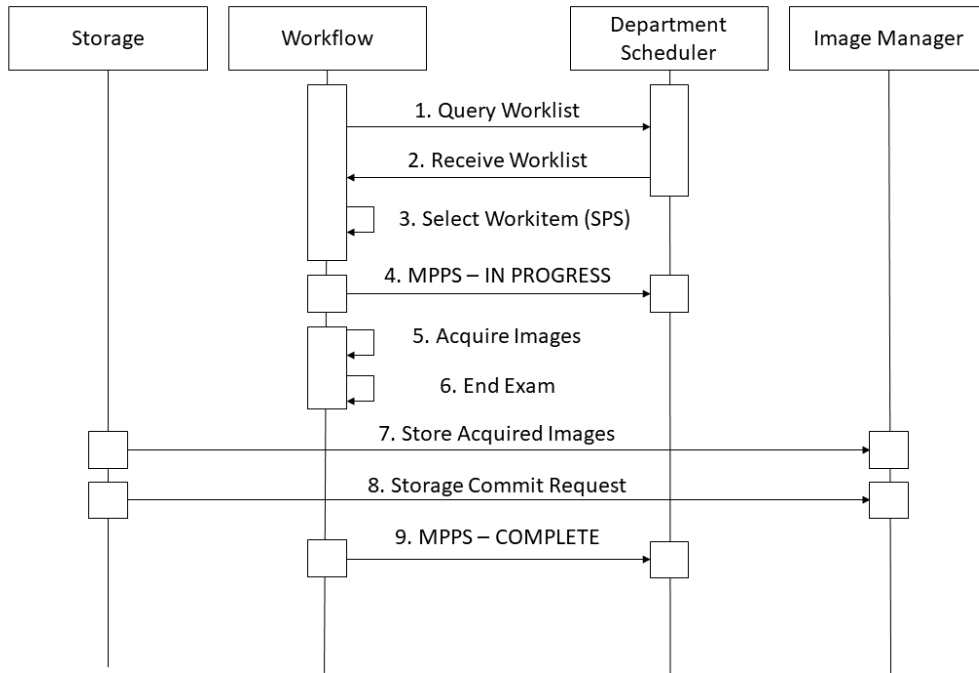


Figure 2-3 Sequencing Constraints - "End of Exam" Configuration

Under normal scheduled workflow conditions the sequencing constraints illustrated apply:

1. Worklist Query is initiated.
2. List of Scheduled Procedure Steps (SPS) are returned.
3. SPS item is selected from the Worklist and the Exam begins.
4. MPPS IN PROGRESS message sent.
5. Images and Clips are acquired.
6. Exam is ended.
7. SOP instances acquired during the exam are stored to the Image Manager.
8. Storage Commitment request is made for stored objects.
9. MPPS COMPLETE (or DISCONTINUED) message sent.

D35815	Rev B	DICOM Conformance Statement (DCS) – Sonosite MT – Version 110.80.120.112, Software BOM 1.2.20000222	Page: 15 of 52
---------------	--------------	--	-----------------------

3 AE SPECIFICATIONS

3.1 STORE AE - SPECIFICATION

The Store AE provides conformance to the following DICOM SOP Classes as an SCU:

Table 3-1 Store AE SOP Class Support

SOP Class Name	SOP Class UID	Conformance Level
Verification	1.2.840.10008.1.1	Standard
Ultrasound Image Storage	1.2.840.10008.5.1.4.1.1.6.1	Standard
Ultrasound Multi-frame Image Storage	1.2.840.10008.5.1.4.1.1.3.1	Standard
Secondary Capture Image Storage	1.2.840.10008.5.1.4.1.1.7	Standard
Basic Text SR Storage	1.2.840.10008.5.1.4.1.1.88.11	Standard
Comprehensive SR Storage	1.2.840.10008.5.1.4.1.1.88.33	Standard

3.1.1 ASSOCIATION ESTABLISHMENT POLICIES

The Store AE will initiate an association to a device in response to the following real-world activities; Archive Exam or Image Acquisition, Review Archive, and Get Status.

3.1.1.1 GENERAL

Maximum PDU size offered to SCP: 131,072 bytes

This is the maximum PDU size the Store AE can receive and is the value offered for the maximum PDU size in the Association Request command. Once the Association is open if the Store AE receives a PDU that is larger than this value then the Association will be aborted.

Minimum PDU size accepted from SCP: 4,096 bytes

This is the minimum PDU size the Store AE can be configured to send. If the Store AE receives a maximum PDU size in the Association Accept response that is smaller than this value then the Association will be aborted immediately.

Maximum PDU size sent by SCU: 131,072 bytes

This is the maximum PDU size the Store AE can be configured to send. The maximum PDU size sent on any Store AE Association will be the smaller of the configured value and the maximum PDU size received in the Association Accept response.

3.1.1.2 NUMBER OF ASSOCIATIONS

Number of simultaneous associations for the Store AE: 1

3.1.1.3 ASYNCHRONOUS NATURE

The Store AE will not use asynchronous operations.

3.1.1.4 IMPLEMENTATION IDENTIFYING INFORMATION

Implementation Class UID: "1.2.276.0.7230010.3.0.3.6.4"

Implementation Version name: "OFFIS_DCMTK_364"

3.1.2 ASSOCIATION INITIATION BY REAL-WORLD ACTIVITY

D35815	Rev B	DICOM Conformance Statement (DCS) – Sonosite MT – Version 110.80.120.112, Software BOM 1.2.2000222	Page: 16 of 52
---------------	--------------	---	-----------------------

This document contains confidential information that is proprietary to FUJIFILM Sonosite Inc. Neither the document nor the information contained therein should be disclosed or reproduced in whole or in part, without express written consent of FUJIFILM Sonosite Inc.

The Store AE will open associations to the storage devices listed in the current destination list in response to the following real-world activities; Archive Exam or Image Acquisition, Review Archive, and Get Status.

3.1.2.1 ASSOCIATION INITIATION BY: ARCHIVE EXAM

The Archive Exam real-world activity if configured for batch transfer mode will cause the Store AE to open associations to each storage device listed in the current destination list.

3.1.2.2 ASSOCIATION INITIATION BY: IMAGE ACQUISITION

The Image Acquisition real-world activity if configured for in-progress transfer mode will cause the Store AE to open an association to the selected storage device .

3.1.2.3 ASSOCIATION INITIATION BY: REVIEW ARCHIVE

The Archive command real-world activity while in Review mode will cause the Store AE to open associations to each storage device listed in the current destination list.

3.1.2.4 ASSOCIATION INITIATION BY: GET STATUS

The Get Status real-world activity will cause the Store AE to open associations to each archiver listed in the current destination list.

D35815	Rev B	DICOM Conformance Statement (DCS) – Sonosite MT – Version 110.80.120.112, Software BOM 1.2.20000222	Page: 17 of 52
This document contains confidential information that is proprietary to FUJIFILM Sonosite Inc. Neither the document nor the information contained therein should be disclosed or reproduced in whole or in part, without express written consent of FUJIFILM Sonosite Inc.			

3.1.3 PROPOSED PRESENTATION CONTEXTS TO AN ARCHIVER

Table 3-2 Store AE Proposed Presentation Contexts to an Archiver

Presentation Context Table					
Abstract Syntax		Transfer Syntax		Role	Extended Negotiation
Name	UID	Name List	UID List		
Verification	1.2.840.10008.1.1	Implicit VR Little Endian	1.2.840.10008.1.2	SCU	None
Ultrasound Image Storage	1.2.840.10008.5.1.4.1.1.6.1	Implicit VR Little Endian Explicit VR Little Endian JPEG Baseline (Process 1) ¹	1.2.840.10008.1.2 1.2.840.10008.1.2.1 1.2.840.10008.1.2.4.50	SCU	None
Ultrasound Multi-frame Image Storage	1.2.840.10008.5.1.4.1.1.3.1	JPEG Baseline (Process 1)	1.2.840.10008.1.2.4.50	SCU	None
Secondary Capture Image Storage	1.2.840.10008.5.1.4.1.1.7	Implicit VR Little Endian Explicit VR Little Endian	1.2.840.10008.1.2 1.2.840.10008.1.2.1	SCU	None
Basic Text SR Storage	1.2.840.10008.5.1.4.1.1.88.11	Implicit VR Little Endian Explicit VR Little Endian	1.2.840.10008.1.2 1.2.840.10008.1.2.1	SCU	None
Comprehensive R Storage	1.2.840.10008.5.1.4.1.1.88.33	Implicit VR Little Endian Explicit VR Little Endian	1.2.840.10008.1.2 1.2.840.10008.1.2.1	SCU	None

¹ This Transfer Syntax is the only one proposed if JPEG Compression is configured.

3.1.3.1 VERIFICATION SOP CLASS

The Store AE provides standard conformance to the Verification SOP Class as an SCU. The remote SCP must support Verification in the same association as the Store Command (C-Store).

3.1.3.2 ULTRASOUND IMAGE STORAGE SOP CLASS

The Ultrasound Image Storage SOP Class uses the Common Composite Image IOD Modules as shown in Table 3-3

Table 3-3 US Image IOD Modules

IE	Module	Reference	Usage
Patient	Patient	3.1.4.1	M
	Clinical Trial Subject	Not Used	U
Study	General Study	3.1.4.2	M
	Patient Study	3.1.4.3	U
	Clinical Trial Study	Not Used	U
Series	General Series	3.1.4.4	M
	Clinical Trial Series	Not Used	U
Frame Of Reference	Frame Of Reference	Not Used	U
	Synchronization	Not Used	U
Equipment	General Equipment	3.1.4.5	M
Image	General Image	3.1.4.7	M
	Image Pixel	3.1.4.8	M
	Contrast/Bolus	Not Used	C
	Palette Color Lookup Table	Not Used	C
	US Region Calibration	3.1.4.11	U
	US Image	3.1.4.12	M
	Overlay Plane	Not Used	U
	VOI LUT	3.1.4.13	U
	SOP Common	3.1.4.14	M

3.1.3.3 ULTRASOUND MULTI-FRAME IMAGE STORAGE SOP CLASS

The Ultrasound Multi-Frame Image Storage SOP Class uses the Common Composite Image IOD Modules as shown in Table 3-4.

Table 3-4 US Multi-Frame Image IOD Modules

IE	Module	Reference	Usage
Patient	Patient	3.1.4.1	M
	Clinical Trial Subject	Not Used	U
Study	General Study	3.1.4.2	M
	Patient Study	3.1.4.3	U
	Clinical Trial Study	Not Used	U
Series	General Series	3.1.4.4	M
	Clinical Trial Series	Not Used	U
Frame Of Reference	Frame Of Reference	Not Used	U
	Synchronization	Not Used	U
Equipment	General Equipment	3.1.4.5	M
Image	General Image	3.1.4.7	M
	Image Pixel	3.1.4.8	M
	Contrast/Bolus	Not Used	C
	Cine	3.1.4.9	M
	Multi-Frame	3.1.4.10	M
	Frame Pointers	Not Used	U
	Palette Color Lookup Table	Not Used	C
	US Region Calibration	3.1.4.11	U
	US Image	3.1.4.12	M
	VOI LUT	3.1.4.13	U
	SOP Common	3.1.4.14	M

3.1.3.4 SECONDARY CAPTURE IMAGE STORAGE SOP CLASS

The Secondary Capture Image Storage SOP Class uses the Common Composite Image IOD Modules as shown in Table 3-5.

Table 3-5 SC Image IOD Modules

IE	Module	Reference	Usage
Patient	Patient	3.1.4.1	M
	Clinical Trial Subject	Not Used	U
Study	General Study	3.1.4.2	M
	Patient Study	3.1.4.3	U
	Clinical Trial Study	Not Used	U
Series	General Series	3.1.4.4	M
	Clinical Trial Series	Not Used	U
Equipment	General Equipment	3.1.4.5	U
	SC Equipment	3.1.4.6	M
Image	General Image	3.1.4.7	M
	Image Pixel	3.1.4.8	M
	SC Image	Not Used	M
	Overlay Plane	Not Used	U
	Modality LUT	Not Used	U
	VOI LUT	3.1.4.13	U

D35815	Rev B	DICOM Conformance Statement (DCS) – Sonosite MT – Version 110.80.120.112, Software BOM 1.2.2000222	Page: 20 of 52
---------------	--------------	---	-----------------------

This document contains confidential information that is proprietary to FUJIFILM Sonosite Inc. Neither the document nor the information contained therein should be disclosed or reproduced in whole or in part, without express written consent of FUJIFILM Sonosite Inc.

IE	Module	Reference	Usage
	SOP Common	3.1.4.14	M

3.1.3.5 BASIC TEXT SR STORAGE SOP CLASS

The Basic Text SR Storage SOP Class uses the IOD Modules as shown in Table 3-4.

Table 3-22 Basic Text SR IOD Modules

IE	Module	Reference	Usage
Patient	Patient	3.1.4.1	M
	Clinical Trial Subject	Not Used	U
Study	General Study	3.1.4.2	M
	Patient Study	3.1.4.3	U
	Clinical Trial Study	Not Used	U
Series	SR Document Series	3.2.4.16	M
	Clinical Trial Series	Not Used	U
Equipment	General Equipment	3.1.4.5	M
Document	SR Document General	3.2.4.17	M
	SR Document Content	3.2.4.18	M
	SOP Common	3.1.4.14	M

3.1.3.6 COMPREHENSIVE SR STORAGE SOP CLASS

The Comprehensive SR Storage SOP Class uses the IOD Modules as shown in Table 3-4.

Table 3-22 Basic Text SR IOD Modules

IE	Module	Reference	Usage
Patient	Patient	3.1.4.1	M
	Clinical Trial Subject	Not Used	U
Study	General Study	3.1.4.2	M
	Patient Study	3.1.4.3	U
	Clinical Trial Study	Not Used	U
Series	SR Document Series	3.2.4.16	M
	Clinical Trial Series	Not Used	U
Equipment	General Equipment	3.1.4.5	M
Document	SR Document General	3.2.4.17	M
	SR Document Content	3.2.4.18	M
	SOP Common	3.1.4.14	M

3.1.4 COMMON COMPOSITE IMAGE IOD MODULES

The section defines the Modules that are common to the Ultrasound, and Secondary Capture Storage SOP Classes.

3.1.4.1 PATIENT MODULE

Table 3-6 specifies the attributes used from the Patient Module. These attributes are used by the Ultrasound, Ultrasound Multi-frame, and Secondary Capture Image Storage SOP Classes. Attributes not listed are not used.

Table 3-6 Patient Module Attributes

Attribute Name	Tag	Type	Attribute Description
Patient's Name ¹	(0010,0010)	2	From Worklist or manually entered on Patient Setup screen (Last and First fields). All 5 Person Name Components are preserved when name comes from Worklist.
Patient ID ¹	(0010,0020)	2	From Worklist or manually entered on Patient Setup screen (MRN field)
Patient's Birth Date ¹	(0010,0030)	2	From Worklist or manually entered on Patient Setup screen (Date of birth fields)
Patient's Sex ¹	(0010,0040)	2	From Worklist or manually entered on Patient Setup screen (Gender pick list)
Other Patient IDs	(0010,1000)	3	From Worklist
Ethnic Group	(0010,2160)	3	Manually entered on Patient Setup screen. Not applicable to all Sonosite software versions. Only sent for IMT Exam Types.

¹This attribute cannot be modified by the user when coming from DICOM Worklist.

3.1.4.2 GENERAL STUDY MODULE

Table 3-7 specifies the attributes used from the General Study Module. These attributes are used by the Ultrasound, Ultrasound Multi-frame, and Secondary Capture Image Storage SOP Classes. Attributes not listed are not used.

Table 3-7 General Study Module Attributes

Attribute Name	Tag	Type	Attribute Description
Study Instance UID	(0020,000D)	1	From Worklist or automatically generated
Study Date	(0008,0020)	2	Procedure start date
Study Time	(0008,0030)	2	Procedure start time
Referring Physician's Name	(0008,0090)	2	From Worklist or manually entered on Patient Setup screen (Referring field) Note: Manually entered values will be sent using only the last name component.
Study ID	(0020,0010)	2	From Worklist (mapped from Requested Procedure ID attribute) or manually entered for unscheduled procedures. If no value is provided via worklist or manual entry, then a value will be automatically generated.
Accession Number ²	(0008,0050)	2	From Worklist or manually entered on Patient Setup screen (Accession field)
Study Description	(0008,1030)	3	From Worklist ¹ or selected manually on Patient screen (Performed Procedure pick list)
Referenced Study Sequence	(0008,1110)	3	From Worklist. Not sent if procedure was unscheduled.
>Referenced SOP Class UID	(0008,1150)	1C	
>Referenced SOP Instance UID	(0008,1155)	1C	
Procedure Code Sequence	(0008,1032)	3	Mapped from Worklist Requested Procedure Code Sequence, if performed. Not sent if procedure was unscheduled.
>Code Value	(0008,0100)	1C	
>Coding Scheme Designator	(0008,0102)	1C	
>Code Meaning	(0008,0104)	1C	
Name of Physician(s) Reading Study	(0008,1060)	3	Populated with blank value; not used.

¹ Always uses the value specified by the user on the Patient form for the Performed Procedure Meaning (Performed Protocol Code Sequence (0040,0260) Code Meaning(0008,0104)).

By default, when a worklist is used, the Performed Procedure Meaning value is initially mapped from Scheduled Protocol Code Sequence (0040,0008) Code Meaning (0008,0104), if it exists. Otherwise, it is set to the value of Requested Procedure Code Sequence (0032,1064) Code Meaning (0008,0104), if it exists. Otherwise, it is set to the value of Scheduled Procedure Step Description (0040,0007), if it exists. Otherwise, it is set to the value of Requested Procedure Description (0032,1060), if it exists. Otherwise, it is set to "Unknown".

The user can override the default worklist mapping behavior described above by choosing the mapping of any one of the following for populating Performed Protocol Code Sequence (0040,0260) Code Meaning (0008,0104) from the worklist:

1. Scheduled Protocol Code Sequence / Code Meaning (0040,0008)
2. Requested Procedure Code Sequence / Code Meaning (0032,1064)
3. Scheduled Procedure Step Description (0040,0007)
4. Requested Procedure Description (0032,1060)

² This attribute cannot be modified by the user when coming from DICOM Worklist.

3.1.4.3 PATIENT STUDY MODULE

Table 3-8 defines attributes used from the Patient Study Module. These attributes are used by the Ultrasound, Ultrasound Multi-frame, and Secondary Capture Image Storage SOP Classes. Attributes not listed are not used.

Table 3-8 Patient Study Module Attributes

Attribute Name	Tag	Type	Attribute Description
Additional Patient's History	(0010,21B0)	3	From Worklist of manually entered on Patient Setup screen (Indications field).

3.1.4.4 GENERAL SERIES MODULE

Table 3-9 specifies the attributes used from the General Series Module. These attributes are used by the Ultrasound, Ultrasound Multi-frame and Secondary Capture Image Storage SOP Classes. Attributes not listed are not used.

Table 3-9 General Series Module Attributes

Attribute Name	Tag	Type	Attribute Description
Modality	(0008,0060)	1	"US"
Series Instance UID	(0020,000E)	1	Automatically generated
Series Number	(0020,0011)	2	"1"
Laterality	(0020,0060)	2C	Zero Length
Series Date	(0008,0021)	3	Procedure start date
Series Time	(0008,0031)	3	Procedure start time
Protocol Name	(0018,1030)	3	Zero length
Series Description	(0008,103E)	3	Same as Performed Procedure Step Description
Performing Physician's Name	(0008,1050)	3	Name of the physician(s) administering the Series
Operator's Name	(0008,1070)	3	Entered on Patient Setup screen (Performing field). The value is transmitted in the last name component
Request Attributes Sequence	(0040,0275)	3	Only sent if the procedure originated from a Worklist Scheduled Procedure Step
>Requested Procedure ID	(0040,1001)	1C	From Worklist
>Scheduled Procedure Step ID	(0040,0009)	1C	From Worklist
>Scheduled Procedure Step Description	(0040,0007)	3	From Worklist
>Scheduled Protocol Code Sequence	(0040,0008)	3	From Worklist
>>Code Value	(0008,0100)	1C	
>>Coding Scheme Designator	(0008,0102)	1C	
>>Code Meaning	(0008,0104)	1C	
Performed Procedure Step ID	(0040,0253)	3	From Worklist (mapped from Scheduled Procedure Step ID) or Generated by the system
Performed Procedure Step Start Date	(0040,0244)	3	Procedure start date
Performed Procedure Step Start Time	(0040,0245)	3	Procedure start time
Performed Procedure Step Description	(0040,0254)	3	Mapped from Worklist SPS description, if performed, or selected manually on Patient Setup screen (Procedure Type pick list)

D35815

Rev B

**DICOM Conformance Statement (DCS) – Sonosite MT –
Version 110.80.120.112, Software BOM 1.2.20000222**

Page: 24 of 52

This document contains confidential information that is proprietary to FUJIFILM Sonosite Inc. Neither the document nor the information contained therein should be disclosed or reproduced in whole or in part, without express written consent of FUJIFILM Sonosite Inc.

Attribute Name	Tag	Type	Attribute Description
Performed Protocol Code Sequence	(0040,0260)	3	Mapped From Worklist Scheduled Protocol Code sequence, if performed. Otherwise sent as zero length sequence.
>Code Value	(0008,0100)	1C	
>Coding Scheme Designator	(0008,0102)	1C	
>Code Meaning	(0008,0104)	1C	

3.1.4.5 GENERAL EQUIPMENT MODULE

Table 3-10 specifies the attributes used from the General Equipment Module. These attributes are used by the Ultrasound, Ultrasound Multi-frame and Secondary Capture Image Storage SOP Classes. Attributes not listed are not used.

Table 3-10 General Equipment Module Attributes

Attribute Name	Tag	Type	Attribute Description
Manufacturer	(0008,0070)	2	"SonoSite, Inc."
Institution Name	(0008,0080)	3	Entered on Patient Setup screen (Institution)
Station Name	(0008,1010)	3	Host Name for current location
Institutional Department Name	(0008,1040)	3	
Manufacturer's Model Name	(0008,1090)	3	Model name (maps to product line)
Software Versions	(0018,1020)	3	System Firmware Version
FUJIFILM USA Sonosite Private Tag	(0019,1110)	2	Worksheet Data in JSON Formatted Text

3.1.4.6 SC EQUIPMENT MODULE

Table 3-11 describes the attributes used from the SC Equipment Module. These attributes are used by the Secondary Capture Image Storage SOP Class. Attributes not listed are not used.

Table 3-11 SC Equipment Module Attributes

Attribute Name	Tag	Type	Attribute Description
Modality	(0008,0060)	3	"US"

3.1.4.7 GENERAL IMAGE MODULE

Table 3-12 specifies the attributes used from the General Image Module. These attributes are used by the Ultrasound, Ultrasound Multi-frame and Secondary Capture Image Storage SOP Classes. Attributes not listed are not used.

Table 3-12 General Image Module Attributes

Attribute Name	Tag	Type	Attribute Description
Instance Number	(0020,0013)	2	A number that identifies this image
Patient Orientation	(0020,0020)	2C	Zero Length
Content Date	(0008,0023)	2C	Image acquisition date
Content Time	(0008,0033)	2C	Image acquisition time

Attribute Name	Tag	Type	Attribute Description
Derivation Description	(0008,2111)	3	“RGB to MONOCHROME2 conversion” - Sent for MONOCHROME2 images “RGB to JPEG Baseline 1 conversion” – Sent for JPEG Lossy compressed images.
Lossy Image Compression	(0028,2110)	3	01=Lossy Compressed - Only sent for MONOCHROME2 and JPEG Lossy Compressed images.
Lossy Image Compression Ratio	(0028,2112)	3	Set to 3 for MONOCHROME2 images. The approximate compression ratio is sent for JPEG Lossy Compressed images.

3.1.4.8 IMAGE PIXEL MODULE

Table 3-13 specifies the attributes used from the Image Pixel Module. These attributes are used by the Ultrasound, Ultrasound Multi-frame and Secondary Capture Image Storage SOP Classes. Attributes not listed are not used.

Table 3-13 Image Pixel Module Attributes

Attribute Name	Tag	Type	Attribute Description
Samples per Pixel	(0028,0002)	1	MONOCHROME2=1, RGB=3, YBR_FULL_422 = 3
Photometric Interpretation	(0028,0004)	1	Configurable in DICOM Setup mode. Valid settings defined by archiver type and Transfer Syntax being used. MONOCHROME2, RGB or YBR_FULL_422
Rows	(0028,0010)	1	1050
Columns	(0028,0011)	1	1400
Bits Allocated	(0028,0100)	1	8
Bits Stored	(0028,0101)	1	8
High Bit	(0028,0102)	1	7
Pixel Representation	(0028,0103)	1	0
Pixel Data	(7FE0,0010)	1	Used – Basic Offset Table is set to zero length for encapsulated multi-frame images.
Planar Configuration	(0028,0006)	1C	0=Color-by-pixel - Only sent for RGB and YBR_FULL_422 images

3.1.4.9 CINE MODULE

Table 3-14 specifies the attributes used from the Cine module. The Ultrasound Multi-Frame Image IOD uses these attributes. Attributes not listed are not used.

Table 3-14 Cine Module Attributes

Attribute Name	Tag	Type	Attribute Description
Frame Time	(0018,1063)	1C	Nominal time (in msec) per individual frame.

3.1.4.10 MULTI-FRAME MODULE

Table 3-15 specifies the attributes used from the Cine module. The Ultrasound Multi-Frame Image IOD uses these attributes.

Table 3-15 Multi-frame Module Attributes

Attribute Name	Tag	Type	Attribute Description
Number of Frames	(0028,0008)	1	Number of frames in a Multi-frame Image.
Frame Increment Pointer	(0028,0009)	1	Always set to 00181063H (Frame Time).

3.1.4.11 US REGION CALIBRATION MODULE

Table 3-16 specifies the attributes used from the US Region Calibration Module. These attributes are used by Ultrasound and Ultrasound Multi-frame Image Storage SOP instances created by the system. Attributes not listed are not used.

Table 3-16 US Region Calibration Attributes

Attribute Name	Tag	Type	Attribute Description
Sequence of Ultrasound Regions	(0018,6011)	1	Used
>Region Location Min x_0	(0018,6018)	1	Automatically generated
>Region Location Min y_0	(0018,601A)	1	Automatically generated
>Region Location Max x_1	(0018,601C)	1	Automatically generated
>Region Location Max y_1	(0018,601E)	1	Automatically generated
>Physical Units X Direction	(0018,6024)	1	
>Physical Units Y Direction	(0018,6026)	1	Automatically generated
>Physical Delta X	(0018,602C)	1	Automatically generated
>Physical Delta Y	(0018,602E)	1	Automatically generated
>Reference Pixel x_0	(0018,6020)	3	Only sent in Spectral Doppler regions.
>Reference Pixel y_0	(0018,6022)	3	Only sent in Spectral Doppler regions.
>Ref. Pixel Physical Value X	(0018,6028)	3	Only sent in Spectral Doppler regions.
>Ref. Pixel Physical Value Y	(0018,602A)	3	Only sent in Spectral Doppler regions.
>Region Spatial Format	(0018,6012)	1	Automatically generated
>Region Data Type	(0018,6014)	1	Automatically generated
>Region Flags	(0018,6016)	1	Automatically generated

3.1.4.12 US IMAGE MODULE

Table 3-17 specifies the attributes used from the US Image Module. These attributes are used by Ultrasound and Ultrasound Multi-frame Image Storage SOP instances created by the system. Attributes not listed are not sent.

Table 3-17 US Image Module Attributes

Attribute Name	Tag	Type	Attribute Description
Samples Per Pixel	(0028,0002)	1	MONOCHROME2=1, RGB=3, YBR_FULL_422 = 3
Photometric Interpretation	(0028,0004)	1	Configurable in DICOM Setup mode Valid settings defined by archiver type and Transfer Syntax being used. MONOCHROME2, RGB or YBR_FULL_422
Bits Allocated	(0028,0100)	1	8
Bits Stored	(0028,0101)	1	8
High Bit	(0028,0102)	1	7
Planar Configuration	(0028,0006)	1C	0=Color-by-pixel - Only sent for RGB and YBR_FULL_422 images
Pixel Representation	(0028,0103)	1	0
Image Type	(0008,0008)	2	RGB = "ORIGINAL\PRIMARY\<ExamType>\nnnn" YBR_FULL_422 or MONOCHROME2 = "DERIVED\PRIMARY\<ExamType>\nnnn" Value for <ExamType>is determined by the exam type selected by the user. nnnn=bit map designating the image mode: 0001 = 2D Imaging 0002 = M-Mode 0004 = CW Doppler 0008 = PW Doppler 0010 = Color Doppler 0100 = Color Power Mode

D35815

Rev B

DICOM Conformance Statement (DCS) – Sonosite MT –
Version 110.80.120.112, Software BOM 1.2.20000222

Page: 28 of 52

This document contains confidential information that is proprietary to FUJIFILM Sonosite Inc. Neither the document nor the information contained therein should be disclosed or reproduced in whole or in part, without express written consent of FUJIFILM Sonosite Inc.

Attribute Name	Tag	Type	Attribute Description
Lossy Image Compression	(0028,2110)	1C	01=Lossy Compressed - Only sent for MONOCHROME2 and JPEG Lossy Compressed images.
Ultrasound Color Data Present	(0028,0014)	3	00=Color data not present in image 01=Color data is present in image
Heart Rate	(0018,1088)	3	
Transducer Data	(0018,5010)	3	

3.1.4.13 VOI LUT MODULE

Table 3-18 specifies the attributes used from the VOI LUT module. These attributes are used by the Ultrasound, Ultrasound Multi-frame and Secondary Capture Image Storage SOP Classes. Attributes not listed are not used.

Table 3-18 VOI LUT Module Attributes

Attribute Name	Tag	Type	Attribute Description
Window Center	(0028,1050)	3	128 - Only sent with Monochrome2
Window Width	(0028,1051)	1C	256 - Only sent with Monochrome2

3.1.4.14 SOP COMMON MODULE

Table 3-19 specifies the attributes used from the SOP Common module. These attributes are used by the Ultrasound, Ultrasound Multi-frame and Secondary Capture Image Storage SOP Classes. Attributes not listed are not used.

Table 3-19 SOP Common Module Attributes

Attribute Name	Tag	Type	Attribute Description
SOP Class UID	(0008,0016)	1	Automatically generated
SOP Instance UID	(0008,0018)	1	Automatically generated
Specific Character Set	(0008,0005)	1C	ISO_IR 100
Instance Number	(0020,0013)	3	A number that identifies this image

3.1.4.15 SR DOCUMENT SERIES MODULE

Table 3-10 specifies the attributes used from the SR Document Series Module. These attributes are used by the SR Document Storage SOP Classes. Attributes not listed are not used.

Table 99-05 SR Document Series Module Attributes

Attribute Name	Tag	Type	Attribute Description
Modality	(0008,0060)	1	"SR"
Series Instance UID	(0020,000E)	1	
Series Number	(0020,0011)	1	
Referenced Performed Procedure Step Sequence	(0008,1111)	2	

3.1.4.16 SR DOCUMENT GENERAL MODULE

Table 3-10 specifies the attributes used from the SR Document General Module. These attributes are used by the SR Storage SOP Classes. Attributes not listed are not used.

Table 99-05 SR Document General Module Attributes

Attribute Name	Tag	Type	Attribute Description
Instance Number	(0020,0013)	1	
Completion Flag	(0040,A491)	1	
Verification Flag	(0040,A493)	1	
Content Date	(0008,0023)	1	
Content Time	(0008,0033)	1	
Performed Procedure Code Sequence	(0040,A372)	2	

3.1.4.17 SR DOCUMENT CONTENT MODULE

Table 3-10 specifies the attributes used from the SR Document Content Module. These attributes are used by the SR Storage SOP Classes. Attributes not listed are not used.

Table 99-05 SR Document Content Module Attributes

Attribute Name	Tag	Type	Attribute Description
Value Type	(0040,A040)	1	
Concept Name Code Sequence	(0040,A043)	1C	
Text Value	(0040,A160)	1C	
Observation Date Time	(0040,A032)	1C	
Content Sequence	(0040,A730)	1C	
>Relationship Type	(0040,A010)	1	
>Referenced Content Item Identifier	(0040,DB73)	1C	

3.1.5 STORE AE BEHAVIOR TO C-STORE STATUS

Table 3-20 describes the behavior for C-Store response status returned from the Storage SCP. All image SOP classes supported by the Store AE exhibit the same behavior.

Table 3-20 Store AE Behavior to C-Store Status

Service Status	Further Meaning	Status Codes	Store AE Behavior
Success		0000	Continue without user notification
Refused	Out of Resources	A7xx	Association terminated. User notified.
Error	Data Set does not match SOP Class	A9xx	Association terminated. User notified.
	Cannot understand	Cxxx	Association terminated. User notified.
Warning	Coercion of data elements	B000	Ignored - Message logged.
	Data set does not match SOP class	B007	Ignored - Message logged.
	Elements discarded	B006	Ignored - Message logged.

3.2 STORAGE COMMITMENT AE – SPECIFICATION

The Storage Commitment AE provides conformance to the following DICOM SOP Classes as an SCU:

Table 3-21 Storage Commitment AE SOP Class Support

SOP Class Name	SOP Class UID	Conformance Level
Verification	1.2.840.10008.1.1	Standard
Storage Commitment Push Model	1.2.840.10008.1.20.1	Standard

3.2.1 ASSOCIATION ESTABLISHMENT POLICIES

The Storage Commitment AE will initiate an association to a device in response to the following real-world activities:

1. All images have been transferred for an exam (batch mode transfer).
2. An image has been transferred for an exam (in-progress mode transfer).
3. The user manually selects to (re) issue commitment request for a particular exam.
4. After system startup, archived but un-committed images exist.

In all cases a N-ACTION command is issued to the Storage Commitment server. After the request has been made, the association is left open for 30 seconds to receive a reply (in case the storage commit server is configured to reply on the same association). After 30 seconds the association is closed.

The Storage Commitment AE will respond to an association request from a device in response to the following real-world activities:

1. Storage Commitment SCP responds to commitment request with N-EVENT-REPORT.

3.2.1.1 GENERAL

Maximum PDU size offered to SCP: 131,072 bytes

This is the maximum PDU size the Store AE can receive and is the value offered for the maximum PDU size in the Association Request command. Once the Association is open if the Store AE receives a PDU that is larger than this value then the Association will be aborted.

Minimum PDU size accepted from SCP: 4,096 bytes

This is the minimum PDU size the Store AE can be configured to send. If the Store AE receives a maximum PDU size in the Association Accept response that is smaller than this value then the Association will be aborted immediately.

Maximum PDU size sent by SCU: 131,072 bytes

This is the maximum PDU size the Store AE can be configured to send. The maximum PDU size sent on any Store AE Association will be the smaller of the configured value and the maximum PDU size received in the Association Accept response.

3.2.1.2 NUMBER OF ASSOCIATIONS

Number of simultaneous associations for the Storage Commitment AE: 1

3.2.1.3 ASYNCHRONOUS NATURE

The Storage Commitment AE will not use asynchronous operations.

3.2.1.4 IMPLEMENTATION IDENTIFYING INFORMATION

Implementation Class UID: "1.2.276.0.7230010.3.0.3.6.4"

Implementation Version name: "OFFIS_DCMTK_364"

3.2.1.5 SCU BEHAVIOR

The system accepts N-EVENT-REPORTS the N-ACTION association or on separate associations.

The system provides visual indication of successful Storage Commitment.

3.2.2 PROPOSED PRESENTATION CONTEXTS TO A STORAGE COMMITMENT SERVER

Table 3-22 Storage Commitment AE Proposed Presentation Contexts

Presentation Context Table					
Abstract Syntax		Transfer Syntax		Role	Extended Negotiation
Name	UID	Name List	UID List		
Verification SOP Class	1.2.840.10008.1.1	Implicit VR Little Endian	1.2.840.10008.1.2	SCU	None
Storage Commitment Push Model	1.2.840.10008.1.20.1	Implicit VR Little Endian	1.2.840.10008.1.2	SCU	None

3.2.2.1 STORAGE COMMITMENT PUSH MODEL SOP CLASS

The Storage Commitment AE provides standard conformance to the Storage Commitment Push Model SOP Class as an SCU.

3.2.2.2 VERIFICATION SOP CLASS

The Storage Commitment AE provides standard conformance to the Verification SOP Class as both SCU and SCP.

3.2.3 STORAGE COMMITMENT ATTRIBUTES

Table 3-23 Storage Commitment Request - Action Information

Action Type Name	Action Type ID	Attribute	Tag	Notes
Request Storage Commitment	1	Transaction UID	(0008,1195)	
		Referenced SOP Sequence	(0008,1199)	
		>Referenced SOP Class UID	(0008,1150)	
		>Referenced SOP Instance UID	(0008,1155)	

Table 3-24 Storage Commitment Result – Event Information

Event Type Name	Event Type ID	Attribute	Tag	Notes
Storage Commitment Request Successful	1	Transaction UID	(0008,1195)	
		Referenced SOP Sequence	(0008,1199)	
		>Referenced SOP Class UID	(0008,1150)	
		>Referenced SOP Instance UID	(0008,1155)	
Storage Commitment Request Complete - Failures Exist	2	Transaction UID	(0008,1195)	
		Referenced SOP Sequence	(0008,1199)	
		>Referenced SOP Class UID	(0008,1150)	
		>Referenced SOP Instance UID	(0008,1155)	
		Failed SOP Sequence	(0008,1198)	
		>Referenced SOP Class UID	(0008,1150)	
		>Referenced SOP Instance UID	(0008,1155)	
>Failure Reason	(0008,1197)			

3.3 MODALITY WORKLIST AE – SPECIFICATION

The Modality Worklist AE provides conformance to the following DICOM SOP Classes as an SCU:

Table 3-25 Modality Worklist AE SOP Class Support

SOP Class Name	SOP Class UID	Conformance Level
Verification	1.2.840.10008.1.1	Standard
Modality Worklist Information Model - FIND	1.2.840.10008.5.1.4.31	Standard

3.3.1 ASSOCIATION ESTABLISHMENT POLICIES

The Modality Worklist AE will initiate an association to a device in response to the following real-world activities;

1. The user initiates a manual Update Worklist (Broad Query).
2. The user initiates a specific Worklist Query (Patient Based Query).
3. The system initiates an Automatic Worklist Query (Broad Query).

In all cases a C-FIND command is issued to the Modality Worklist server. After the requested data is returned, the association is closed.

3.3.1.1 GENERAL

Maximum PDU size offered to SCP: 131,072 bytes

This is the maximum PDU size the Modality Worklist AE can receive and is the value offered for the maximum PDU size in the Association Request command. Once the Association is open if the Modality Worklist AE receives a PDU that is larger than this value then the Association will be aborted.

Minimum PDU size accepted from SCP: 4,096 bytes

This is the minimum PDU size the Modality Worklist AE can be configured to send. If the Modality Worklist AE receives a maximum PDU size in the Association Accept response that is smaller than this value then the Association will be aborted immediately.

Maximum PDU size offered to SCI: 131,072 bytes

This is the maximum PDU size the Modality Worklist AE can be configured to send. The maximum PDU size sent on any Modality Worklist AE Association will be the smaller of the configured value and the maximum PDU size received in the Association Accept response.

3.3.1.2 NUMBER OF ASSOCIATIONS

Number of simultaneous associations for the Modality Worklist AE: 1

3.3.1.3 ASYNCHRONOUS NATURE

The Modality Worklist AE will not use asynchronous operations.

3.3.1.4 IMPLEMENTATION IDENTIFYING INFORMATION

Implementation Class UID: "1.2.276.0.7230010.3.0.3.6.4"

Implementation Version name: "OFFIS_DCMTK_364"

ASSOCIATION INITIATION BY REAL-WORLD ACTIVITY

The Modality Worklist AE will open associations to the configured Worklist SCP in response to the following real-world activities; Update Worklist, Query Worklist, Automatic Worklist Query, and Get Status.

3.3.1.5 ASSOCIATION INITIATION BY: UPDATE WORKLIST

The Update Worklist real-world activity initiated in Worklist screen will cause the Modality Worklist AE to open an association with the Worklist SCP, configured in the current Location.

3.3.1.6 ASSOCIATION INITIATION BY: WORKLIST QUERY

The Query Worklist command real-world activity initiated in Patient Setup screen will cause the Modality Worklist AE to open an association with the Worklist SCP, configured in the current Location.

3.3.1.7 ASSOCIATION INITIATION BY: AUTOMATIC WORKLIST QUERY

The Automatic Worklist Query real-world activity initiated by the system at periodic intervals will cause the Modality Worklist AE to open an association with the Worklist SCP, configured in the current Location.

3.3.1.8 ASSOCIATION INITIATION BY: GET STATUS

The Get Status real-world activity will cause the Modality Worklist AE to open an association to the Modality Worklist SCP configured in the current Location.

D35815	Rev B	DICOM Conformance Statement (DCS) – Sonosite MT – Version 110.80.120.112, Software BOM 1.2.20000222	Page: 34 of 52
This document contains confidential information that is proprietary to FUJIFILM Sonosite Inc. Neither the document nor the information contained therein should be disclosed or reproduced in whole or in part, without express written consent of FUJIFILM Sonosite Inc.			

3.3.2 PROPOSED PRESENTATION CONTEXTS TO A WORKLIST SERVER

Table 3-26 Modality Worklist AE Proposed Presentation Contexts to a Worklist Server

Presentation Context Table					
Abstract Syntax		Transfer Syntax		Role	Extended Negotiation
Name	UID	Name List	UID List		
Verification SOP Class	1.2.840.10008.1.1	Implicit VR Little Endian	1.2.840.10008.1.2	SCU	None
Modality Worklist Information Model - FIND	1.2.840.10008.5.1.4.31	Implicit VR Little Endian	1.2.840.10008.1.2	SCU	None

3.3.2.1 MODALITY WORKLIST INFORMATION MODEL – FIND SOP CLASS

The Modality Worklist AE provides standard conformance to the Modality Worklist Information Model - FIND SOP Class as an SCU.

3.3.2.2 VERIFICATION SOP CLASS

The Modality Worklist AE provides standard conformance to the Verification SOP Class as an SCU.

3.3.3 MODALITY WORKLIST ATTRIBUTES

3.3.3.1 BROAD WORKLIST QUERY MATCHING KEY ATTRIBUTES

Table 3-27 specifies the Matching Key attributes used by Automatic Worklist C-FIND requests and manual Update Worklist C-FIND requests for Broad queries initiated by the user from the Worklist screen.

Table 3-27 Broad Worklist Query Matching Key Attributes

Attribute Name	Tag	Type	Notes
Modality	(0008,0060)	R	Selectable from list provided by User Interface
Scheduled Station AE-Title	(0040,0001)	R	Configurable – Sent as either ; 1) Sonosite system’s AE Title 2) Universal Matching.
Scheduled Procedure Step Start Date	(0040,0002)	R	Configurable – Sent as either; 1) Today’s date 2) Yesterday, Today and Tomorrow date range 3) Universal Matching

3.3.3.2 PATIENT BASED QUERY MATCHING KEY ATTRIBUTES

Table 3-28 specifies the Matching Key attributes used for Worklist C-FIND requests for Patient Based queries initiated by the user from the Patient Setup screen.

Table 3-28 Patient Based Query Matching Key Attributes

Attribute Name	Tag	Type	Notes
Modality	(0008,0060)	R	Selectable from list provided by User Interface
Scheduled Station AE-Title	(0040,0001)	R	Configurable – Sent as either ; 1) Sonosite system’s AE Title 2) Universal Matching.

Attribute Name	Tag	Type	Notes
Scheduled Procedure Step Start Date	(0040,0002)	R	Configurable – Sent as either; 1) Today's date 2) Yesterday, Today and Tomorrow date range 3) Universal Matching
Patient's Name	(0010,0010)	R	Entered on Patient Setup screen. A wild card is appended to Last and First name component.
Patient ID	(0010,0020)	R	Entered on Patient Setup screen. Single value matching only.
Accession Number	(0008,0050)	O	Entered on Patient Setup screen.
Requested Procedure ID	(0040,1001)	O	Entered on Patient Setup screen.

3.3.3.3 RETURN KEY ATTRIBUTES

Table 3-29 specifies the Return Key attributes that are included in all Worklist C-FIND requests.

Table 3-29 Return Key Attributes

Attribute Name	Tag	Type	Notes
Study Instance UID	(0020,000D)	1	
Accession Number ⁴	(0008,0050)	2	Displayed on Patient Setup screen
Referring Physician's Name	(0008,0090)	2	Displayed on Patient Setup screen
Patient's Name ⁴	(0010,0010)	1	Displayed on Patient Setup screen. All 5 name components are preserved but only Last, First and Middle name components are displayed.
Patient ID ⁴	(0010,0020)	1	Displayed on Patient Setup screen
Patients Birth Date	(0010,0030)	2	Displayed on Patient Setup screen
Patient's Sex	(0010,0040)	2	Displayed on Patient Setup screen
Other Patient IDs	(0010,1000)	3	
Additional Patient History	(0010,21B0)	3	Displayed on Patient Setup screen as Indications
Admitting Diagnoses Description	(0008,1080)	3	Displayed on Patient Setup screen as Indications if Additional Patient History is not returned.
Last Menstrual Date	(0010,21D0)	2	Displayed on Patient Setup screen.
Scheduled Procedure Step Sequence	(0040,0100)	1	
>Modality	(0008,0060)	1	
>Scheduled Station AE Title	(0040,0001)	1	
>Scheduled Procedure Step Start Date	(0040,0002)	1	
>Scheduled Procedure Step Start Time	(0040,0003)	1	
>Scheduled Procedure Step Description ⁴	(0040,0007)	1C	
>Scheduled Protocol Code Sequence	(0040,0008)	1C	
>>Code Value	(0008,0100)	1C	
>>Coding Scheme Designator	(0008,0102)	1C	
>>Code Meaning	(0008,0104)	3	
>Scheduled Procedure Step ID	(0040,0009)	1	
Requested Procedure ID ⁴	(0040,1001)	1	Displayed on Patient Setup screen.

Attribute Name	Tag	Type	Notes
Requested Procedure Description ⁴	(0032,1060)	1C	
Requested Procedure Code Sequence	(0032,1064)	1C	
>Code Value	(0008,0100)	1C	
>Coding Scheme Designator	(0008,0102)	1C	
>Code Meaning ⁴	(0008,0104)	3	
Referenced Study Sequence	(0008,1110)	2	
>Referenced SOP Class UID	(0008,1150)	1C	
>Referenced SOP Instance UID	(0008,1155)	1C	

⁴ This attribute from Worklist may be truncated when displayed in the User Interface. However, the value contained in the attribute is preserved in full fidelity.

3.3.4 WORKLIST AE BEHAVIOR TO C-FIND STATUS

Table 3-30 specifies the response status codes, which an SCP may return following the SCU's C-FIND request, along with the Worklist AEs associated behavior. Only those status responses that indicate some form of error condition are presented to the user. Related fields are not used.

Table 3-30 Worklist AE Behavior to C-FIND Status

Service Status	Further Meaning	Status Codes	Worklist AE Behavior
Refused	Out of resources	A700	The association is terminated. The user is notified of the failure.
Failed	Identifier does not match SOP Class	A900	The association is terminated. The user is notified of the failure.
	Unable to process	Cxxx	The association is terminated. The user is notified of the failure.
Cancel	Matching terminated due to Cancel request	FE00	The association is terminated. The user is notified that the query was incomplete.
Success	Matching is complete - No final Identifier is supplied.	0000	The Modality Worklist AE will continue operation without user notification.
Pending	Matches are continuing - Current Match is supplied and any Optional Keys were supported in the same manner as Required Keys.	FF00	The Modality Worklist AE will continue operation without user notification.
	Matches are continuing - Warning that one or more Optional Keys were not supported for existence for this Identifier.	FF01	The Modality Worklist AE will continue operation without user notification.

3.4 MODALITY PERFORMED PROCEDURE STEP (MPPS) AE – SPECIFICATION

The MPPS AE provides conformance to the following DICOM SOP Classes as an SCU:

Table 3-31 MPPS AE SOP Class Support

D35815	Rev B	DICOM Conformance Statement (DCS) – Sonosite MT – Version 110.80.120.112, Software BOM 1.2.20000222	Page: 37 of 52
This document contains confidential information that is proprietary to FUJIFILM Sonosite Inc. Neither the document nor the information contained therein should be disclosed or reproduced in whole or in part, without express written consent of FUJIFILM Sonosite Inc.			

SOP Class Name	SOP Class UID	Conformance Level
Verification	1.2.840.10008.1.1	Standard
Modality Peformed Procedure Step	1.2.840.10008.3.1.2.3.3	Standard

3.4.1 ASSOCIATION ESTABLISHMENT POLICIES

The MPPS AE will initiate an association to a device in response to the following real-world activities:

1. The user begins a new procedure.
2. The user completes (or discontinues) a procedure.
3. The system has queued up procedures whose status has not yet been transmitted to the MPPS SCP.

In the case of beginning a procedure an N-CREATE command is issued to the MPPS SCP. In the case of completing/discontinuing a procedure, an N-SET is issued to the MPPS SCP. After the message has been made, the association is closed.

3.4.1.1 GENERAL

Maximum PDU size offered to SCP: 131,072 bytes

This is the maximum PDU size the MPPS AE can receive and is the value offered for the maximum PDU size in the Association Request command. Once the Association is open if the MPPS AE receives a PDU that is larger than this value then the Association will be aborted.

Minimum PDU size accepted from SCP: 4,096 bytes

This is the minimum PDU size the MPPS AE can be configured to send. If the MPPS AE receives a maximum PDU size in the Association Accept response that is smaller than this value then the Association will be aborted immediately.

Maximum PDU size offered to SCI: 131,072 bytes

This is the maximum PDU size the MPPS AE can be configured to send. The maximum PDU size sent on any MPPS AE Association will be the smaller of the configured value and the maximum PDU size received in the Association Accept response.

3.4.1.2 NUMBER OF ASSOCIATIONS

Number of simultaneous associations for the MPPS AE: 1

3.4.1.3 ASYNCHRONOUS NATURE

The MPPS AE will not use asynchronous operations.

3.4.1.4 IMPLEMENTATION IDENTIFYING INFORMATION

Implementation Class UID: "1.2.276.0.7230010.3.0.3.6.4"

Implementation Version name: "OFFIS_DCMTK_364"

3.4.2 PROPOSED PRESENTATION CONTEXTS TO AN MPPS SERVER

Table 3-32 MPPS AE Proposed Presentation Contexts

Presentation Context Table					
Abstract Syntax		Transfer Syntax		Role	Extended Negotiation
Name	UID	Name List	UID List		
Verification SOP Class	1.2.840.10008.1.1	Implicit VR Little Endian	1.2.840.10008.1.2	SCU	None
Modality Performed Procedure Step	1.2.840.10008.3.1.2.3.3	Implicit VR Little Endian	1.2.840.10008.1.2	SCU	None

3.4.2.1 MPPS SOP CLASS

The MPPS AE provides standard conformance to the Modality Performed Procedure Step SOP Class as an SCU.

3.4.2.2 VERIFICATION SOP CLASS

The MPPS AE provides standard conformance to the Verification SOP Class as an SCU.

3.4.3 MPPS INFORMATION MODEL ATTRIBUTES

Table 3-33 MPPS SOP Class N-CREATE and N-SET Attributes

Attribute Name	Tag	Req. Type N-CREATE	Req. Type N-SET	Notes
Scheduled Step Attribute Sequence	(0040,0270)	1	Not allowed	
>Study Instance UID	(0020,000D)	1	Not allowed	
>Referenced Study Sequence	(0008,1110)	2	Not allowed	From Worklist
>>Referenced SOP Class UID	(0008,1150)	1	Not allowed	
>>Referenced SOP Instance UID	(0008,1155)	1	Not allowed	
>Accession Number	(0008,0050)	2	Not allowed	
>Requested Procedure ID	(0040,1001)	2	Not allowed	
>Requested Procedure Code Sequence	(0032,1064)	3	Not allowed	From Worklist
>>Code Value	(0008,0100)	1	Not allowed	
>>Coding Scheme Designator	(0008,0102)	1	Not allowed	
>>Code Meaning	(0008,0104)	1	Not allowed	
>Requested Procedure Description	(0032,1060)	2	Not allowed	
>Scheduled Procedure Step ID	(0040,0009)	2	Not allowed	
>Scheduled Procedure Step Description	(0040,0007)	2	Not allowed	
>Scheduled Protocol Code Sequence	(0040,0008)	2	Not allowed	From Worklist

>>Code Value	(0008,0100)	1	Not allowed	
>>Coding Scheme designator	(0008,0102)	1	Not allowed	
>>Code Meaning	(0008,0104)	3	Not allowed	
Patient's Name	(0010,0010)	2	Not allowed	
Patient ID	(0010,0020)	2	Not allowed	
Patient's Birth Date	(0010,0030)	2	Not allowed	
Patient's Sex	(0010,0040)	2	Not allowed	
Referenced Patient Sequence	(0008,1120)	2	Not allowed	Empty
Performed Procedure Step ID	(0040,0253)	1	Not allowed	Internally Generated "SONOPPSxxxxxxx"
Performed Station AE Title	(0040,0241)	1	Not allowed	
Performed Station Name	(0040,0242)	2	Not allowed	
Performed Location	(0040,0243)	2	Not allowed	
Performed Procedure Step Start Date	(0040,0244)	1	Not allowed	
Performed Procedure Step Start Time	(0040,0245)	1	Not allowed	
Performed Procedure Step Status	(0040,0252)	1	3	
Performed Procedure Step Description	(0040,0254)	2	3	N-CREATE only
Performed Procedure Type Description	(0040,0255)	2	3	N-CREATE only
Procedure Code Sequence	(0008,1032)	2	3	N-CREATE only
>Code Value	(0008,0100)	1	1	
>Coding Scheme Designator	(0008,0102)	1	1	
>Code Meaning	(0008,0104)	3	3	
Performed Procedure Step End Date	(0040,0250)	2	3	
Performed Procedure Step End Time	(0040,0251)	2	3	
Modality	(0008,0060)	1	Not allowed	"US"
Study ID	(0020,0010)	2	Not allowed	
Performed Protocol Code Sequence	(0040,0260)	2	3	N-CREATE only
>Code Value	(0008,0100)	1	1	
>Coding Scheme Designator	(0008,0102)	1	1	
>Code Meaning	(0008,0104)	3	3	
Performed Series Sequence	(0040,0340)	2	3	
>Performing Physician's Name	(0008,1050)	2	2	
>Protocol Name	(0018,1030)	1	1	Internally Generated "SONOPPSxxxxxxx"

>Operators' Name	(0008,1070)	2	2	
>Series Instance UID	(0020,000E)	1	1	
>Series Description	(0008,103E)	2	2	
>Retrieve AE Title	(0008,0054)	2	2	
>Referenced Image Sequence	(0008,1140)	2	2	
>>Referenced SOP Class UID	(0008,1150)	1	1	
>>Referenced SOP Instance UID	(0008,1155)	1	1	
>Referenced Non-Image Composite SOP Instance Sequence	(0040,0220)	2	2	
>>Referenced SOP Class UID	(0008,1150)	1	1	
>>Referenced SOP Instance UID	(0008,1155)	1	1	

3.5 MEDIA EXPORT AE – SPECIFICATION

3.5.1 INTRODUCTION

This section of the conformance statement specifies the system's compliance to DICOM Media Storage. It details the roles supported by this product.

The Sonosite system is able to export DICOM images and reports to removable USB media stick memory. Any reference to USB in this document refers to "USB media stick memory".

3.5.2 IMPLEMENTATION MODEL

The Media Export AE saves single and multi-frame US images and reports to a USB storage device. It is associated with the local real-world activity "Export to USB". "Export to USB" is performed upon user request for selected patient series.

3.5.2.1 APPLICATION DATA FLOW



Figure 3-1 Media Export Data Flow

3.5.2.2 FUNCTIONAL DEFINITION OF THE AE

The system can perform the following functions:

D35815	Rev B	DICOM Conformance Statement (DCS) – Sonosite MT – Version 110.80.120.112, Software BOM 1.2.20000222	Page: 41 of 52
This document contains confidential information that is proprietary to FUJIFILM Sonosite Inc. Neither the document nor the information contained therein should be disclosed or reproduced in whole or in part, without express written consent of FUJIFILM Sonosite Inc.			

- Create a new DICOM file-set on the USB medium
- Add to an existing DICOM file-set previously created by the system

3.5.2.3 SEQUENCING OF REAL-WORLD ACTIVITIES

Not applicable.

3.5.2.4 FILE META INFORMATION OPTIONS (SEE PS 3.10)

The implementation information written to the File Meta Header in each file is:

Implementation Class UID: "1.2.276.0.7230010.3.0.3.6.4"
 Implementation Version name: "OFFIS_DCMTK_364"

D35815	Rev B	DICOM Conformance Statement (DCS) – Sonosite MT – Version 110.80.120.112, Software BOM 1.2.20000222	Page: 42 of 52
This document contains confidential information that is proprietary to FUJIFILM Sonosite Inc. Neither the document nor the information contained therein should be disclosed or reproduced in whole or in part, without express written consent of FUJIFILM Sonosite Inc.			

3.5.3 AE SPECIFICATIONS

3.5.3.1 FILE META INFORMATION FOR THE APPLICATION ENTITY

The Source Application Entity Title included in the file header is configurable. The default value set in the File Meta Information for this AE is: "DICOM Media".

3.5.3.2 REAL-WORLD ACTIVITIES

3.5.3.2.1 REAL-WORLD ACTIVITY – "EXPORT TO USB"

"Export to USB" saves the selected DICOM SOP instances to the USB medium and creates a DICOM File Set. If a DICOM File Set created by the system exists on the medium, any new files selected for export will be added to the existing files. The Media Export AE acts as a File Set Creator when requested to export SOP instances from the internal storage to a USB medium. If there is insufficient space on the medium, the user will be prompted with an informative message.

Limitations: The user cannot review or manipulate DICOM files written to the USB medium on the system.

3.5.3.2.1.1 Media Storage Application Profile for the real-world activity "Export to USB"

Not applicable [FUTURE]

3.5.3.2.1.1.1 Options

This Application Entity supports the SOP Classes and Transfer Syntaxes listed below in Table 3-34:

Table 3-34 SOP Classes and Transfer Syntaxes for Media Export

Abstract Syntax		Transfer Syntax	
Name	UID	Name List	UID List
Media Storage Directory Storage	1.2.840.10008.1.3.10	Explicit VR Little Endian	1.2.840.10008.1.2.1
Ultrasound Image Storage	1.2.840.10008.5.1.4.1.1.6.1	Explicit VR Little Endian JPEG Baseline (Process 1)	1.2.840.10008.1.2.1 1.2.840.10008.1.2.4.50
Ultrasound Multi-frame Image Storage	1.2.840.10008.5.1.4.1.1.3.1	Explicit VR Little Endian JPEG Baseline (Process 1)	1.2.840.10008.1.2.1 1.2.840.10008.1.2.4.50
Comprehensive SR Storage	1.2.840.10008.5.1.4.1.1.88.33	Explicit VR Little Endian	1.2.840.10008.1.2.1
Basic Text SR Storage	1.2.840.10008.5.1.4.1.1.88.11	Explicit VR Little Endian	1.2.840.10008.1.2.1

Sec. 3.2.4 Common Composite Image IOD Module describes image module usage by the system.

3.5.4 AUGMENTED AND PRIVATE APPLICATION PROFILES

Not applicable.

3.5.5 MEDIA CONFIGURATION

The Application Entity Titles configurable for Media Services are listed below:

Application Entity: "Media Export"

Default AE Title: "DICOM Media"

3.5.6 MEDIA STORAGE SOP CLASS

The following diagram illustrates the relationship between directory entities in the Basic Directory module produced by the system. It is based on the basic DICOM entity relationship model.

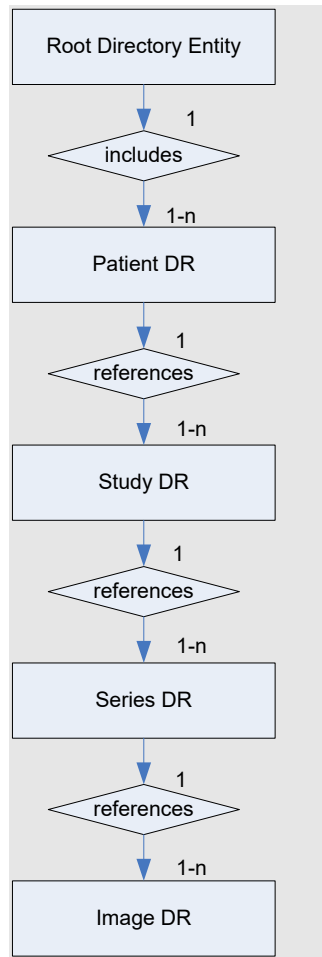


Figure 3-2 Directory Entity Relationship Diagram

The Media Storage SOP Class uses the Basic Directory IOD Modules as shown in Table 3-35.

Table 3-35 Basic Directory IOD Modules

Module	Reference	Usage
File-set Identification	3.1.4.1	M
Directory Information	3.4.7.2	U

3.5.7 INFORMATION MODULE DEFINITIONS

3.5.7.1 FILE-SET IDENTIFICATION MODULE

Table 3-36 specifies the attributes used from the File-set Identification Module.

Table 3-36 File-Set Identification Module

Attribute Name	Tag	Type	Attribute Description
File-set ID	(0004,1130)	2	"SONO_EXPORT"
File-set Descriptor ID	(0004,1141)	3	Not Used
Specific Character Set of File-set Descriptor File	(0004,1142)	1C	Not Used

3.5.7.2 DIRECTORY INFORMATION MODULE

Table 3-37 specifies the attributes used from the Directory Information Module.

Table 3-37 Directory Information Module

Attribute Name	Tag	Type	Attribute Description
Offset of the First Directory Record of the Root Directory Entity	(0004,1200)	1	See PS 3.3
Offset of the Last Directory Record of the Root Directory Entity	(0004,1202)	1	See PS 3.3
File-set Consistency Flag	(0004,1212)	1	See PS 3.3
Directory Record Sequence	(0004,1220)	2	See PS 3.3
>Offset of the Next Directory Record	(0004,1400)	1C	See PS 3.3
>Record In-use Flag	(0004,1410)	1C	All records set to 0xFFFF
>Offset of Referenced Lower-Level Directory Entity	(0004,1420)	1C	See PS 3.3
>Directory Record Type	(0004,1430)	1C	Supported Values: PATIENT, STUDY, SERIES, IMAGE
>Referenced File ID	(0004,1500)	1C	See PS 3.3
>Referenced SOP Class UID in File	(0004,1510)	1C	See PS 3.3
>Referenced SOP Instance UID in File	(0004,1511)	1C	See S 3.3
>Referenced Transfer Syntax in UID in File	(0004,1512)	1C	See PS 3.3

3.5.7.2.1 PATIENT KEYS

Table 3-38 specifies the additional keys used for directory records of type PATIENT.

Table 3-38 PATIENT KEYS

Attribute Name	Tag	Type	Attribute Description
Patient's Name	(0010,0010)	2	Reference 3.2.4.1
Patient ID	(0010,0020)	1	Reference 3.2.4.1

3.5.7.2.2 STUDY KEYS

Table 3-39 specifies the additional keys used for directory records of type STUDY.

Table 3-39 STUDY KEYS

Attribute Name	Tag	Type	Attribute Description
Study Date	(0008,0020)	1	Reference 3.2.4.2
Study Time	(0008,0030)	1	Reference 3.2.4.2
Study Description	(0008,1030)	2	Reference 3.2.4.2
Study Instance UID	(0020,000D)	1C	Reference 3.2.4.2
Study ID	(0020,0010)	1	Reference 3.2.4.2
Accession Number	(0008,0050)	2	Reference 3.2.4.2

3.5.7.2.3 SERIES KEYS

Table 3-40 specifies the additional keys used for directory records of type SERIES.

Table 3-40 SERIES KEYS

Attribute Name	Tag	Type	Attribute Description
Modality	(0008,0060)	1	Reference 3.2.4.4
Series Instance UID	(0020,000E)	1	Reference 3.2.4.4
Series Number	(0020,0011)	1	Reference 3.2.4.4

3.5.7.2.4 IMAGE KEYS

Table 3-41 specifies the additional keys used for directory records of type IMAGE.

Table 3-41 IMAGE KEYS

Attribute Name	Tag	Type	Attribute Description
Instance Number	(0020,0013)	1	Reference 3.2.4.7

4 COMMUNICATION PROFILES

4.1 TCP/IP STACK

The TCP/IP protocol is used.

D35815	Rev B	DICOM Conformance Statement (DCS) – Sonosite MT – Version 110.80.120.112, Software BOM 1.2.20000222	Page: 47 of 52
This document contains confidential information that is proprietary to FUJIFILM Sonosite Inc. Neither the document nor the information contained therein should be disclosed or reproduced in whole or in part, without express written consent of FUJIFILM Sonosite Inc.			

5 EXTENSIONS/SPECIALIZATIONS/PRIVATIZATIONS

5.1 PRIVATE TRANSFER SYNTAXES

None

5.2 PRIVATE TAGS

(0019,1110)[UT] – Private Tag Contains Synchronicity Worksheet Data

D35815	Rev B	DICOM Conformance Statement (DCS) – Sonosite MT – Version 110.80.120.112, Software BOM 1.2.20000222	Page: 48 of 52
This document contains confidential information that is proprietary to FUJIFILM Sonosite Inc. Neither the document nor the information contained therein should be disclosed or reproduced in whole or in part, without express written consent of FUJIFILM Sonosite Inc.			

5.3 PROPRIETARY ENCODINGS

5.3.1 IMAGE TYPE (0008,0008) CODE STRING VALUES

Table 5-1 specifies the mapping of Exam Type Names available on the products to the Image Type Code string value.

Table 5-1 Image Type (0008, 0008) Code String Values

Fujifilm Sonosite Exam Type Name	Image Type Code String Value (blank if not mapped)
Abdomen	ABDOMINAL
Arterial	VASCULAR
Breast	BREAST
Cardiac	EPICARDIAL
Cardiac Resuscitation	
Carotid	VASCULAR
Early OB	EARLY OB
Focused Cardiac	EPICARDIAL
Gynecology	GYNECOLOGY
Lung	LUNG
Musculoskeletal	MUSCULOSKELETAL
Neonatal Abdomen	NEONATAL ABDOMEN
Neonatal Cardiac	NEONATAL CARDIAC
Neonatal Head	NEONATAL HEAD
Neonatal Lung	NEONATAL LUNG
Nerve	NERVE
OB	OBSTETRICAL
Ophthalmic	OPHTHALMIC
Orbital	ORBITAL
Pediatric Abdomen	PEDIATRIC ABDOMEN
Pediatric Cardiac	PEDIATRIC CARDIAC
Pediatric Lung	PEDIATRIC LUNG
PIV	VENOUS
Procedural Abdomen	ABDOMINAL
Prostate	PROSTATE
Spine	SPINE
Superficial	SUPERFICIAL
Transcranial	TRANSCRANIAL
Vascular Access	VASCULAR
Venous	VENOUS
Vessel	VASCULAR
VExUS	ABDOMINAL
Volume Flow	VASCULAR

CONFIGURATION

5.4 AE TITLE/PRESENTATION ADDRESS MAPPING

The AE Title and networking parameters are configurable in DICOM Setup Mode. Port number 104 is the default used for DICOM communication with the system.

5.5 CONFIGURABLE PARAMETERS

5.5.1 CONFIGURABLE PARAMETERS PER NETWORK LOCATION

The system can be configured to operate in multiple network locations. The local device settings and remote device settings (e.g. Archivers/Worklist/MPPS/Storage Commitment) can be configured for each location. These parameters are intended to be configured by a network/DICOM administrator.

Configurable Networking and DICOM parameters:

- DHCP
- DICOM AE Title
- IPv4:
 - IP Address (disabled if DHCP is selected)
 - Subnet Mask (disabled if DHCP is selected)
 - Default Gateway (disabled if DHCP is selected)
 - DNS Address (disabled if DHCP is selected)
- IPv6:
 - IP Address (disabled if SLAAC is selected)
 - Subnet Mask (disabled if SLAAC is selected)
 - Default Gateway (disabled if SLAAC is selected)
 - DNS Address (disabled if SLAAC is selected)
- Transfer Images (End of exam, During the exam)
- JPEG Compression level
- Port (default = 104)
- Wireless properties (see User Guide for detailed configuration information)

5.5.2 CONFIGURABLE PARAMETERS PER REMOTE DEVICE INSTANCE

Every archiver, storage commit, MPPS, and modality worklist device that the system is setup to communicate with has a set of parameters that are configurable in Setup mode. These parameters are intended to be configured by a network/DICOM administrator.

Configurable parameters for each device instance:

- DICOM AE Title
- IP Address
- Port Number
- Use DIMSE TLS (On/Off, see User Guide for detailed configuration information)
- TLS Client Certificate (Optional, used for authentication if desired)
- TLS Private Key (Optional, used for authentication if desired)
- TLS Private Key Password (Optional, used for authentication if desired)
- TLS Certification Authority (Optional, used for authentication if desired)

D35815	Rev B	DICOM Conformance Statement (DCS) – Sonosite MT – Version 110.80.120.112, Software BOM 1.2.20000222	Page: 50 of 52
This document contains confidential information that is proprietary to FUJIFILM Sonosite Inc. Neither the document nor the information contained therein should be disclosed or reproduced in whole or in part, without express written consent of FUJIFILM Sonosite Inc.			

6 SUPPORT OF EXTENDED CHARACTER SETS

The system supports the ISO 8859 Latin 1 (ISO-IR 100) character set family.

The Specific Character Set key attribute (0008,0005), a type 1C attribute, may be returned by an SCP if that device supports any character set encodings beyond the ISO_IR 6. If the tag is not present in the Worklist query result, the default (i.e. ISO_IR 6, i.e. ASCII) is assumed. If the tag is present, only ISO_IR 6 (ASCII), or ISO_IR 100 (Latin Alphabet # 1) are supported by the system. All other character set encodings are unsupported and will cause the system to issue a C-Find Cancel. All query results data acquired up to the first detection of an unsupported character set encoding are retained and presented to the user.

D35815	Rev B	DICOM Conformance Statement (DCS) – Sonosite MT – Version 110.80.120.112, Software BOM 1.2.20000222	Page: 52 of 52
This document contains confidential information that is proprietary to FUJIFILM Sonosite Inc. Neither the document nor the information contained therein should be disclosed or reproduced in whole or in part, without express written consent of FUJIFILM Sonosite Inc.			