

Vevo MD

Cleaning and Disinfection Guide

FUJIFILM | VISUALSONICS

Legal Notices

Manufacturer

FUJIFILM SonoSite, Inc., 21919 30th Drive SE, Bothell, WA 98021, USA
T: 1-888-482-9449 or 1-425-951-1200
F: 1-425-951-1201

EC Authorized Representative

Emergo Europe, Molenstraat 15, 2513 BH, The Hague, Netherlands

Australia Sponsor

FUJIFILM SonoSite Australasia Pty Ltd, 114 Old Pittwater Road, BROOKVALE, NSW, 2100, Australia

Caution: United States federal law restricts this device to sale by or on the order of a physician.

SonoSite, VisualSonics, Vevo, Vevo MD and the VisualSonics logo are registered and unregistered trademarks of FUJIFILM SonoSite, Inc. in various jurisdictions. All other trademarks are the property of their respective owners.

Patents: CA 2501647; CA 2525220; CN 201430080125.0; CN ZL200380101220.3; CN ZL200380105066.7; CN ZL20040013162.3; CN ZL200480019107.5; CN ZL200580020418.8; CN ZL200680014137.6; CN 200680018668; CN 200680050246; CN ZL200780016016.X; CN ZL200780027688.0; EU 1853169; FR 1465531; FR 1625630;FR 1642154; FR 1715897; FR 1738407; FR 1853169; FR 1952175; FR 2029025; DE 1465531; DE 1738407; DE 1853169; DE 1952175; DE 2029025; DE 602004007521; DE 602004010098; DE 602005021057; HK 1085109; HK 1087316; HK 1129243; HK 1132644; IE 1465531; IT 1465531; IT 1715897; IT 1738407; IT 1952175; JP 4713339; JP 4331720; JP 4805140; JP 4805254; JP 4807761; JP 4869932; JP 4942666; JP 5254867; JP 5415086; JP 2014-7668; JP 2014-7669; JP 2014-7671; NL 1465531; NL 1715897; NL 1738407; ES 1465531; ES 1952175; GB 1465531; GB 1625630; GB 1642154; GB 1715897; GB 1738407; GB 1952175; GB 2029025; US 6,851,392; US 6,984,284; US 7,052,460; US 7,133,713; US 7,230,368; US 7,255,678; US 7,426,904; US 7,434,542; US 7,674,228; US 7,750,536; US 7,798,963; US 7,808,156; US 7,830,069; US 7,901,358; US 8,078,256; US 8,275,449; US 8,316,518; US 8,317,714; US 8,343,289; US 8,529,452; US 8,708,909; US 8,827,907; US 8,847,467; US 8,945,014 and pending.

Part Number: 53158 1.0

Publication Date: April, 2017

Copyright © 2017 FUJIFILM SonoSite, Inc. All rights reserved.

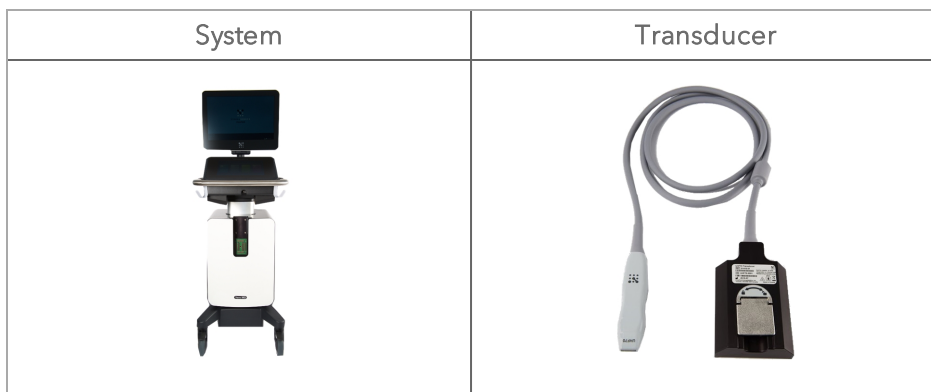


Contents

Cleaning and disinfecting	7
Determining the required cleaning and disinfecting level	7
Step A: Semi-critical contact cleaning and disinfecting of system and transducer	10
Part 1 of 2: Cleaning of system and transducer, disinfecting of system for semi-critical contact	10
Semi-critical cleaning and disinfection	12
Part 2 of 2: High-level disinfecting of transducer for semi-critical contact	14
Step B: Non-critical contact cleaning and disinfecting of the system and transducer	17
Non-critical cleaning and disinfecting	19
Cleaning and disinfecting the foot switch	22
Cleaning and disinfecting level	22
Spaulding classification	22
Before getting started	22
Non-critical contact cleaning and disinfecting of the foot switch	24
Non-critical cleaning and disinfecting	26

Cleaning and disinfecting

The system and transducer must be cleaned and disinfected after each exam. It is important to follow these cleaning and disinfecting instructions without skipping any steps.



Determining the required cleaning and disinfecting level

Note: Please be aware that you must perform both a cleaning as well as a disinfection for each component.

The level of cleaning and disinfecting required for the system and transducer is dictated by the type of tissue it contacts during use. Use the "[Cleaning and disinfecting guide](#)" on the next page to determine the level of cleaning and disinfecting required.

Spaulding classifications

Spaulding classifications (non-critical, semi-critical) determine the approach for cleaning and disinfecting medical equipment based on the device, the way it has been used, and the risk of infection. The system and transducer are designed for use within the Spaulding classifications of non-critical and semi-critical, as per the "[Cleaning and disinfecting guide](#)" on the next page.

Cleaning and disinfecting guide

Did any part of the system or transducer come in contact with broken skin, blood, or bodily fluids?

A

YES

(semi-critical)



"Step A: Semi-critical contact cleaning and disinfecting of system and transducer " on page 10

OR

B

NO

(non-critical)



"Step B: Non-critical contact cleaning and disinfecting of the system and transducer " on page 17

Before getting started

- **Inspect** the system and transducer to determine that it is free of any unacceptable deterioration, such as corrosion, discoloration, pitting, or cracked seals. If damage is evident, discontinue use, and contact FUJIFILM SonoSite or your local representative.
- **Confirm** that cleaning and disinfecting materials are appropriate for your facility's use. FUJIFILM SonoSite tests disinfectants and disinfectant devices for use with the system and transducer.
- **Verify** expiration dates, concentration, and efficacy of chemicals (for example, a chemical strip test). Disinfectants and cleaning methods listed are recommended by FUJIFILM SonoSite for efficacy and material compatibility with the products.
- **Ensure** that the disinfectant type and the solution strength and duration are appropriate for the equipment.

- **Follow** manufacturer recommendations and local regulations, when preparing, using, and disposing of chemicals.
- **Follow** the disinfectant manufacturer's recommendations regarding appropriate personal protective equipment (PPE), such as protective eye wear and gloves.

Warning: Ensure that cleaning and disinfecting solutions and wipes are not expired.

Some cleaners and disinfectants can cause an allergic reaction to some individuals.

Caution: Do not allow cleaning solution or disinfectant into the system or transducer connectors.

Do not use strong solvents such as thinner or benzene, or abrasive cleansers, since these will damage the exterior surfaces. Use only FUJIFILM SonoSite recommended cleaners or disinfectants.

A

Step A: Semi-critical contact cleaning and disinfecting of system and transducer

Part 1 of 2: Cleaning of system and transducer, disinfecting of system for semi-critical contact

Follow the manufacturer's instructions when using cleaners and disinfectants. The materials listed in the table below are chemically compatible with the system and transducer. Confirm that cleaning and disinfecting materials are appropriate for your facility's use.

Compatible cleaners and disinfectants

Product	System	Transducers (UHF22, UHF48, UHF70)	Wet Contact Time
Tristel Sporicidal Wipes	✓	✗	30 seconds
Microbac Tissues	✗	✓	1 minutes
Cleanisept wipes	✓	✓	2 minutes
Sani-Cloth AF3 (grey top)*	✓	✗	3 minutes
Sani-Cloth Bleach (orange top)*	✓	✓	4 minutes
Sani-Cloth HB (green top)	✓	✓	10 minutes

Compatible cleaners and disinfectants

Product	System	Transducers (UHF22, UHF48, UHF70)	Wet Contact Time
PI-Spray II	✓	✓	10 minutes
*Qualified for use as an intermediate-level disinfectant for mycobacteria			

Warning: Disconnect the system from the power before cleaning to avoid electrical shock.

Wear the appropriate personal protective equipment (PPE) recommended by the chemical manufacturer, such as eyewear and gloves.

Caution: Do not spray cleaners and disinfectants directly on surfaces or on the connectors of the system and transducer—doing so may cause solutions to leak into the system, damaging it and voiding the warranty.

Do not scratch the clinical display.

Do not attempt to disinfect a transducer using a method or chemical that is not included here. This can damage the transducer and void the warranty.

Use only FUJIFILM SonoSite recommended disinfectants. Using a non-recommended disinfecting solution or incorrect solution strength can damage the system and void the warranty. Follow the disinfectant manufacturer's recommendations.

START

Semi-critical cleaning and disinfection

- 1 **Put on** gloves, for protection from cleaning and disinfecting materials. Change gloves as needed throughout the procedure.
- 2 **Turn off** the system by pressing the **Power button**.
- 3 **Turn off** the main power switch located on the bottom of the system near the back, where the power cord connects.
- 4 **Unplug** the power cord from the outlet.
- 5 **Unplug** the network cable, if applicable.
- 6 **Disconnect** and remove the transducer from the system.
- 7 **Remove** the transducer sheath (probe cover), if applicable.
- 8 **Obtain** a compatible cleaner. Compatible cleaning materials are listed in the table "[Compatible cleaners and disinfectants](#)" on page 10.

Caution: Make sure the solution does not get into any of the connector ports.

Apply the disinfectant solution to the cloth rather than applying it directly to surfaces if not using a wipe.

- 9 **Clean** the transducer cable and transducer body to remove any visible gel, debris, or bodily fluids.

◆ Starting from the transducer connector end, clean the transducer cable and transducer body in a downward motion toward the scanhead. Wipe from clean areas to the soiled areas to avoid cross-contamination.

Caution: Do not wipe the transducer connector.

10 Clean the system to remove any visible gel, debris or bodily fluids.

◆ **Wipe** from clean areas to the soiled areas to avoid cross-contamination.

11 Verify that all gel, debris, and bodily fluids have been removed from the transducer and system. If necessary, repeat Steps 9 and 10, with a new wipe.

12 Obtain a compatible disinfectant. Compatible disinfectant materials listed in the table "[Compatible cleaners and disinfectants](#)" on page 10.

Caution: Make sure the solution does not get into any of the connector ports.

Apply the disinfectant solution to the cloth rather than applying it directly to surfaces if not using a wipe.

13 Disinfect the system by wiping all surfaces including:

- clinical display (upper monitor)
- control panel (lower monitor)
- transducer and gel holders
- cable hooks
- grab bars
- all surfaces that may have been touched and/or contaminated

14 Ensure the system stays wet with the disinfectant for the wet contact time listed in the table "[Compatible cleaners and disinfectants](#)" on page 10. **This may require reapplication to achieve the required wet time.**

◆ For example, if you are using Sani-Cloth Bleach it has a wet contact time of 4 minutes. Wipe the entire system until thoroughly wet. If the system starts to dry before the 4 minutes is reached, use a new wipe and re-wet the system. Continue the process of re-wetting with a new wipe until a total wet time of 4 minutes is reached.

15 **Allow** the system to air dry in a clean, well ventilated space. Do not dry with a cloth.

16 Continue to "[Part 2 of 2: High-level disinfecting of transducer for semi-critical contact](#)" below.

Part 2 of 2: High-level disinfecting of transducer for semi-critical contact

Warning: Wear the appropriate personal protective equipment (PPE) recommended by the chemical manufacturer, such as eyewear and gloves.

High-level disinfectants can cause harm to the patient if not completely removed from the transducer. Follow the manufacturer's rinse instructions to remove chemical residue.

Caution: Do not skip any steps or abbreviate the disinfecting process in any way.

Do not use unapproved disinfecting agents.

Do not soak the transducer longer than recommended by the chemical manufacturer.

Do not immerse the transducer connector in any disinfectant solution.

Use only FUJIFILM SonoSite recommended disinfectants. Using a non-recommended disinfecting solution or incorrect solution strength can damage or discolor the transducer and void the transducer warranty.

Compatible high-level disinfectants for semi-critical contact

Transducer	Disinfectant	Temperature	Disinfectant soak duration	Clean water soak time
UHF22 UHF48 UHF70	Cidex	25°C (77°F)	45 minutes	3 x 1 minute

1 Ensure you have cleaned the transducer as seen in "[Part 1 of 2: Cleaning of system and transducer, disinfecting of system for semi-critical contact](#)" on page 10.

2 Obtain compatible high-level disinfecting materials. Compatible materials listed in the table "[Compatible high-level disinfectants for semi-critical contact](#)" above.

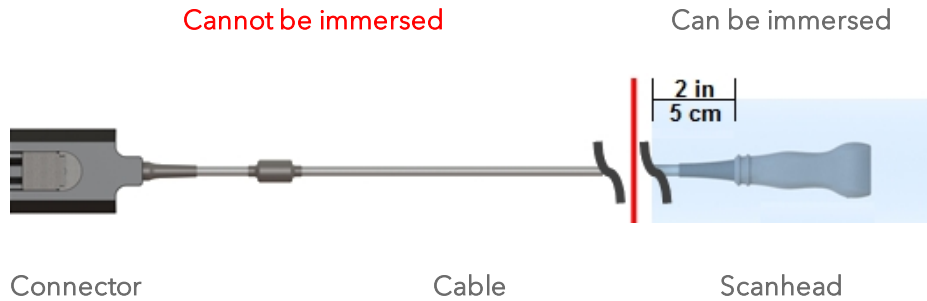
Caution: Ensure that you select the proper disinfectant according to your transducer.

Cidex OPA is not compatible with any FUJIFILM SonoSite UHF transducer.

Use only FUJIFILM SonoSite recommended disinfectants listed in the table "[Compatible high-level disinfectants for semi-critical contact](#)" above to avoid damage to the transducer.

3 Follow the information in the table "[Compatible high-level disinfectants for semi-critical contact](#)" above for solution strengths and soak times. Refer to the disinfectant manufacturer's instructions for additional information.

4 Immerse the transducer into the high-level disinfectant solution. Refer to the table "[Compatible high-level disinfectants for semi-critical contact](#)" above for soak times. Ensure that the transducer connector remains out of the fluid. Ensure that the scanhead and only 2 in (5 cm) are immersed. Refer to the figure below.



5 **Rinse** by soaking the area that was immersed, in sterile or clean water, according to the disinfectant manufacturer's instructions. See the table "[Compatible high-level disinfectants for semi-critical contact](#)" on the previous page for a list of clean water soak times.

◆ For example, Cidex OPA recommends a minimum 1 minute soak repeated 3 times. This requires either replacing the water three times or having 3 bins with fresh water.

6 **Dry** with a clean lint-free cloth, or allow to air dry completely.

7 **Examine** the transducer and cable for damage, such as cracks or splitting where fluid can enter. If damage is evident, discontinue use of the transducer, and contact FUJIFILM SonoSite or your local representative.

DONE

B

Step B: Non-critical contact cleaning and disinfecting of the system and transducer

Follow the manufacturer's instructions when using cleaners and disinfectants. The materials listed in the table below are chemically compatible with the system and transducer. Confirm that cleaning and disinfecting materials are appropriate for your facility's use.

Compatible cleaners and disinfectants

Product	System	Transducers (UHF22, UHF48, UHF70)	Wet Contact Time
Tristel Sporicidal Wipes	✓	✗	30 seconds
Microbac Tissues	✗	✓	1 minutes
Cleanisept wipes	✓	✓	2 minutes
Sani-Cloth AF3 (grey top)*	✓	✗	3 minutes
Sani-Cloth Bleach (orange top)*	✓	✓	4 minutes
Sani-Cloth HB (green top)	✓	✓	10 minutes
PI-Spray II	✓	✓	10 minutes
*Qualified for use as an intermediate-level disinfectant for mycobacteria			

Warning: Disconnect the system from the power before cleaning to avoid electrical shock.

Wear the appropriate personal protective equipment (PPE) recommended by the chemical manufacturer, such as eyewear and gloves.

Caution: Do not spray cleaners or disinfectants directly on surfaces or on the connectors of the system and transducer—doing so may cause solutions to leak into the system, damaging it and voiding the warranty.

Do not scratch the clinical display.

Do not attempt to disinfect a transducer using a method or chemical that is not included here. This can damage the transducer and void the warranty.

Use only FUJIFILM SonoSite recommended disinfectants. Using a non-recommended disinfecting solution or incorrect solution strength can damage the system and void the warranty. Follow the disinfectant manufacturer's recommendations.

START

Non-critical cleaning and disinfecting

- 1 **Put on** gloves, for protection from cleaning and disinfecting materials. Change gloves as needed throughout the procedure.
- 2 **Turn off** the system by pressing the **Power button**.
- 3 **Turn off** the main power switch located on the bottom of the system near the back, where the power cord connects.
- 4 **Unplug** the power cord from the outlet.
- 5 **Unplug** the network cable, if applicable.
- 6 **Disconnect** and remove the transducer from the system.
- 7 **Remove** the transducer sheath (probe cover), if applicable.
- 8 **Obtain** a compatible cleaner. Compatible cleaning materials are listed in the table "[Compatible cleaners and disinfectants](#)" on page 17.

Caution: Make sure that the solution does not get into any of the connector ports.

Apply the disinfectant solution to the cloth rather than applying it directly to surfaces, if not using a wipe.

- 9 **Clean** the transducer cable and transducer body to remove any visible gel, debris or bodily fluids.

- ◆ Starting from the transducer connector end, clean the transducer cable and transducer body in a downward motion toward the scanhead. Wipe from clean areas to the soiled areas to avoid cross-contamination.

Caution: Do not wipe the transducer connector.

10 Clean the system to remove any visible gel, debris or bodily fluids.

◆ Wipe from clean areas to the soiled areas to avoid cross-contamination.

11 Verify that all gel, debris, and bodily fluids have been removed from the transducer and system. If necessary, repeat Steps 9 and 10, with a new wipe.

12 Obtain a compatible disinfectant. Compatible disinfectant materials are listed in the table "[Compatible cleaners and disinfectants](#)" on page 17.

Caution: Make sure that the solution does not get into any of the connector ports.

Apply the disinfectant solution to the cloth rather than applying it directly to surfaces, if not using a wipe.

13 Disinfect the system by wiping all surfaces including:

- clinical display (upper monitor)
- control panel (lower monitor)
- transducer and gel holders
- cable hooks
- grab bars
- all surfaces that may have been touched and/or contaminated

14 Ensure the system stays wet with the disinfectant for the wet contact time listed in the table "[Compatible cleaners and disinfectants](#)" on page 17. **This may require reapplication to achieve the required wet time.**

◆ For example, if you are using Sani-Cloth Bleach it has a wet contact time of 4 minutes. Wipe the entire system until thoroughly wet. If the system starts to dry before the 4 minutes is reached, use a new wipe and re-wet the system. Continue the process of re-wetting with a new wipe until a total wet time of 4 minutes is reached.

15 Allow the system to air dry in a clean, well ventilated space. Do not dry with a cloth.

16 Obtain a new cloth moistened with a compatible disinfectant or disinfectant wipe. Compatible disinfectant materials are listed in the table "[Compatible cleaners and disinfectants](#)" on page 17.

17 Disinfect the transducer body by wiping the surface.

18 Ensure the transducer stays wet with the disinfectant for the wet contact time listed in the table "[Compatible cleaners and disinfectants](#)" on page 17. **This may require reapplication to achieve the required wet time.**

◆ For example, if you are using Sani-Cloth Bleach it was a wet contact time of 4 minutes. Wipe the transducer cable and body until thoroughly wet. If the transducer starts to dry before 4 minutes is reached, use a wipe and re-wet the transducer. Continue the process of re-wetting with a new wipe until a total wet time of 4 minutes is reached.

19 Allow the transducer to air dry in a clean, well ventilated space.

20 Examine the transducer and cable for damage, such as cracks or splitting where fluid can enter. **If damage** is evident, do not use the transducer, and contact FUJIFILM SonoSite or your local representative.

DONE

Cleaning and disinfecting the foot switch

The foot switch must be cleaned and disinfected after each exam. It is important to follow these cleaning and disinfecting instructions without skipping any steps.

Warning: The foot switch is not intended for use in a sterile environment.

Caution: To avoid damaging the foot switch, do not sterilize.



Cleaning and disinfecting level

An intermediate-level of cleaning and disinfecting is required for the foot switch.

Spaulding classification

The foot switch is designed for use within the Spaulding classifications of non-critical.

Before getting started

Before cleaning and disinfecting:

- **Inspect** the foot switch to determine that it is free of any unacceptable deterioration, such as corrosion, discoloration, pitting, or cracked seals. If damage is evident, discontinue use, and contact FUJIFILM SonoSite or your local representative.

- **Confirm** that cleaning and disinfecting materials are appropriate for your facility's use. FUJIFILM SonoSite tests disinfectants and disinfectant devices for use with the foot switch.
- **Verify** expiration dates, concentration, and efficacy of chemicals (for example, a chemical strip test). Disinfectants and cleaning methods listed are recommended by FUJIFILM SonoSite for efficacy and material compatibility with the products.
- **Ensure** that the disinfectant type and the solution strength and duration are appropriate for the equipment.
- **Follow** manufacturer recommendations and local regulations, when preparing, using, and disposing of chemicals.
- **Follow** the disinfectant manufacturer's recommendations regarding appropriate personal protective equipment (PPE), such as protective eye wear and gloves.

Warning: Ensure that cleaning and disinfecting solutions and wipes are not expired.

Some cleaners and disinfectants can cause an allergic reaction to some individuals.

Caution: Do not allow cleaning solution or disinfectant into the system or foot switch connectors.

Do not use strong solvents such as thinner or benzene, or abrasive cleansers, since these will damage the exterior surfaces. Use only FUJIFILM SonoSite recommended cleaners or disinfectants.

Non-critical contact cleaning and disinfecting of the foot switch

Follow the manufacturer's instructions when using cleaners and disinfectants. The materials listed in the table below are chemically compatible with the foot switch. Confirm that cleaning and disinfecting materials are appropriate for your facility's use.

Compatible cleaners and disinfectants

Product	System	Transducers (UHF22, UHF48, UHF70)	Wet Contact Time
Tristel Sporicidal Wipes	✓	✗	30 seconds
Microbac Tissues	✗	✓	1 minutes
Cleanisept wipes	✓	✓	2 minutes
Sani-Cloth AF3 (grey top)*	✓	✗	3 minutes
Sani-Cloth Bleach (orange top)*	✓	✓	4 minutes
Sani-Cloth HB (green top)	✓	✓	10 minutes
PI-Spray II	✓	✓	10 minutes

*Qualified for use as an intermediate-level disinfectant for mycobacteria

Warning: Disconnect the system from the power before cleaning to avoid electrical shock.

Wear the appropriate personal protective equipment (PPE) recommended by the chemical manufacturer, such as eye wear and gloves.

Caution: Do not spray cleaners or disinfectants directly on surfaces or on the connectors of the foot switch—doing so may cause solutions to leak into the foot switch, damaging it and voiding the warranty.

Do not attempt to disinfect the foot switch using a method or chemical that is not included here. This can damage the foot switch and void the warranty.

Use only FUJIFILM SonoSite recommended disinfectants. Using a non-recommended disinfecting solution or incorrect solution strength can damage the foot switch and void the warranty. Follow the disinfectant manufacturer's recommendations.

START

Non-critical cleaning and disinfecting

1 **Put on** gloves, for protection from cleaning and disinfecting materials. Change gloves as needed throughout the procedure.

2 **Unplug** the foot switch from the system.

3 **Obtain** a compatible cleaner. Compatible cleaning materials are listed in the table "[Compatible cleaners and disinfectants](#)" on page 24.

Caution: Make sure the solution does not get into any of the connector ports.

Apply the disinfectant solution to the cloth rather than applying it directly to surfaces if not using a wipe.

4 **Clean** the foot switch and cable to remove any visible gel, debris or bodily fluids.

◆ **Wipe** from clean areas to the soiled areas to avoid cross-contamination.

Warning: Do not wipe the USB connector on the foot switch cable.

5 **Verify** that all gel, debris and bodily fluids have been removed from the foot switch and cable. If necessary, repeat Steps 4, with a new wipe.

6 **Obtain** a compatible disinfectant. Compatible disinfectant materials listed in the table "[Compatible cleaners and disinfectants](#)" on page 24.

Caution: Make sure that the solution does not get into any of the foot switches.

Apply the disinfectant solution to the cloth rather than applying it directly to surfaces, if not using a wipe.

7 **Disinfect** the foot switch by wiping all surfaces including:

- left switch
- right switch
- foot switch body
- USB power cord (not USB connector)

8 Ensure the foot switch stays wet with the disinfectant for the wet contact time listed in the table "[Compatible cleaners and disinfectants](#)" on page 24. **This may require reapplication to achieve the required wet time.**

◆ For example, if you are using Sani-Cloth Bleach it has a wet contact time of 4 minutes. Wipe the entire system until thoroughly wet. If the system starts to dry before the 4 minutes is reached, use a new wipe and re-wet the system. Continue the process of re-wetting with a new wipe until a total wet time of 4 minutes is reached.

9 Allow the foot switch to air dry in a clean, well ventilated space. Do not dry with a cloth.

10 Examine the foot switch and USB cable for damage, such as cracks or splitting where fluid can enter. **If damage** is evident, do not use the foot switch and contact FUJIFILM SonoSite or your local representative.

DONE

FUJIFILM
VISUALSONICS

53158 1.0

