

**FUJIFILM**  
Value from Innovation

SonoSite SII



Gen MB

- Transducer
- Patient
- Annotate
- Settings

Nrv  
HFL  
MI  
0.7  
TIS  
0.1  
144

1.8


144 <>>

Calipers Calcs Zoom

Two large rotary knobs and a play button.

Buttons labeled M, C, and 2D.

EMPOWERING  
EFFICIENCY.



TRANSFORMING THE  
PACE OF YOUR PRACTICE,  
THROUGH SIMPLY,  
SMART ULTRASOUND.

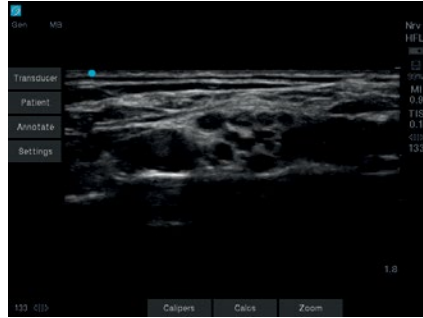
The SII empowers your efficiency through an intuitive, yet smart user interface that adapts to your imaging needs. The system is portable and can be used across multiple hospital environments, including a zero footprint option for space-constrained rooms. We listened to you and designed the SII system to maximize the productivity of your practice, and support you in providing simply the best patient care.

5

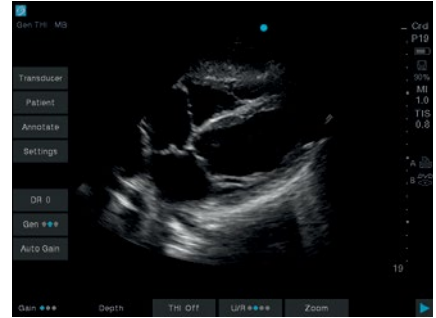
TECHNOLOGY DRIVEN  
5-YEAR STANDARD WARRANTY  
WARRANTY



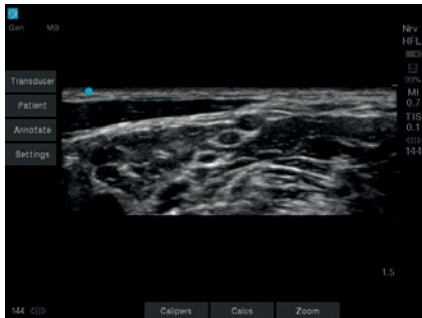
HFL38xi – Internal Jugular Vein



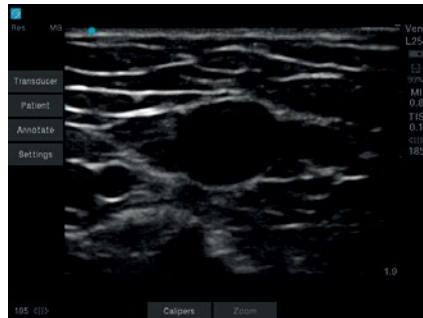
HFL38xi – Supraclavicular



rP19x – Subcostal Cardiac



HFL38xi – Interscalene



L25x – Basilic Vein



rC60xi – Portal Vein

## VISUALIZATION, CLEARLY ENHANCED.

### ELEVATED COLOR SENSITIVITY

Through a dual flex and thin lens design, combined with new advancements in image optimization, the HFL38xi was engineered for increased penetration, clarity, and color sensitivity. You can now better visualize nerves and vessels, whether it be for procedural guidance or flow analysis.

### OPTIMIZED IMAGING EXPERIENCE

DirectClear Technology is a novel, patent-pending process that elevates transducer performance:

- Improved penetration and contrast resolution: Unlike conventional SonoSite transducers, a more efficient material has been embedded into the design that allows for the generation of more acoustic signal. In parallel, a reflective layer has been added to reduce the loss of this signal, as it is transmitted into the patient.
- Sharpened detail resolution: An additional layer has been added to provide a better acoustic match between the transducer and the patient, increasing the ability to resolve small structures and aid in your diagnostic confidence.

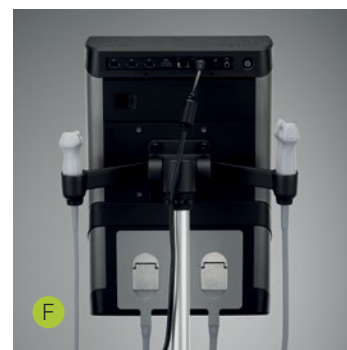
# SonoSite S11

INTELLIGENCE,  
INSPIRED BY YOU.

- A Touchscreen menu automatically adapts to your needs
- B Tactile knobs for gain and depth control
- C Virtual track pad displays only when needed
- D Flexible control of caliper, zoom, and color box through virtual track pad or touchscreen
- E Easy access to commonly used controls (Mode, Print, Save)
- F Embedded Dual Transducer Connector. Switch exam types or transducers with two taps on the screen

WORKFLOW EXTENDED,  
FROM SYSTEM TO STAND.

- G Lockable drawer with tray behind system
- H Dedicated gel bottle holder
- I Elevated transducer holders
- J Large storage basket



## SONOSITE SII TRANSDUCERS



**L38xi** ●●

**10-5 MHz Linear**

**Applications:**  
lung, nerve, small parts,  
arterial, venous

**Scan depth: 9 cm**



**HFL38xi** ●

**13-6 MHz Linear**

**Applications:**  
breast, lung, musculoskeletal,  
nerve, ophthalmic, small  
parts, arterial, venous

**Scan depth: 6 cm**



**HFL50x** ●

**15-6 MHz Linear**

**Applications:**  
breast, musculoskeletal,  
nerve, small parts

**Scan depth: 6 cm**



**L25x** ●●

**13-6 MHz Linear**

**Applications:**  
lung, musculoskeletal, nerve,  
superficial, arterial, venous,  
ophthalmic

**Scan depth: 6 cm**



**C11x**

**8-5 MHz Curved**

**Applications:**  
abdominal, neonatal, nerve,  
venous, arterial, cardiology  
(vet)

**Scan depth: 13.5 cm**



**rC60xi** ●●●●

**5-2 MHz Curved**

**Applications:**  
abdominal, musculoskeletal,  
nerve, ob, gyn

**Scan depth: 30 cm**



**ICTx** ●

**8-5 MHz Curved**

**Applications:**  
ob, gyn

**Scan depth: 13 cm**



**rP19x** ●●

**5-1 MHz Phased**

**Applications:**  
abdominal, cardiology, lung,  
ob

**Scan depth: 35 cm**



**P10x** ●

**8-4 MHz Phased**

**Applications:**  
ped. abdominal, ped.  
cardiology, neonatal head

**Scan depth: 14 cm**



**HSL25x**

**13-6 MHz Linear**

**Applications:**  
lung, musculoskeletal, nerve,  
superficial, arterial, venous,  
ophthalmic

**Scan depth: 6 cm**



**L52x (Vet)** ●

**10-5 MHz Linear**

**Applications:**  
musculoskeletal, ob, arterial

**Scan depth: 15 cm**



**C35x** ●

**8-3 MHz Curved**

**Applications:**  
abdominal, musculoskeletal,  
nerve, ob, spine

**Scan depth: 15 cm**



**C8x** ●

**8-5 MHz Curved**

**Applications:**  
prostate

**Scan depth: 11.5 cm**



**P11x**

**10-5 MHz Phased**

**Applications:**  
venous, vascular

**Scan depth: 12 cm**

- DirectClear Technology.
- Optional Armored Cable.
- Needle guides and kits available.
- A transverse needle guide available.

## SYSTEM SPECIFICATIONS

<b>System weight</b>	12.6 lbs./5.70 kg with battery
<b>Dimensions</b>	17.6" x 11.5" x 4.8" / 44.7 cm x 29.3 cm x 12.3 cm
<b>Display</b>	12.1"/30.7 cm diagonal LCD (NTSC or PAL) with chemically- etched glass layer
<b>Viewing Angles:</b>	85° up/down/left/right
<b>Architecture</b>	All-digital broadband
<b>Dynamic range</b>	Up to 165 dB
<b>Gray scale</b>	256 shades
<b>HIPAA compliance</b>	Comprehensive tool set

## MOUNTING OPTIONS

Video Electronics Standards Association (VESA™)  
Mounting: (2.9" x 2.9" / 75mm x 75mm) and  
(3.9" x 3.9" / 100mm x 100mm)

## IMAGING MODES

2D / Tissue Harmonic Imaging / M-Mode  
Velocity Color Doppler / Color Power Doppler

## IMAGE PROCESSING

SonoADAPT™ Tissue Optimization  
SonoHD2™ Imaging Technology  
Dual Imaging, Duplex Imaging, 2x pan/zoom  
capability, Dynamic range and gain  
ColorHD™ Technology

## STEEP NEEDLE PROFILING

C35x – Nerve, MSK, Spine  
HFL38xi – Nerve, MSK, Breast, Small Parts,  
Arterial, Venous  
HFL50x – Nerve, MSK, Breast, Small Parts  
L25x – Nerve, MSK, Arterial, Venous  
HSL25x – Nerve, MSK, Arterial, Venous  
L38xi – Nerve  
rC60xi – Nerve, MSK

## USER INTERFACE

Gain control through tactile knob: overall, near, far  
Depth control via tactile knob  
Adaptive touchscreen display with menus optimized  
for current system state  
Easy access to commonly used controls on capacitive  
touch pad. (Scan/Freeze, Modes, Print, Save Clip,  
Save Image)  
Touchscreen manipulation for Calipers, Zoom and  
Color Box (Virtual track pad also available)

## TRANSDUCERS

### Broadband/Multifrequency:

DirectClear Technology (rP19x, rC60xi)  
Armored Cable Technology (optional on L38xi, L52x,  
rP19x, rC60xi)  
Linear Array, Curved Array, Phased Array,  
Micro-Convex  
Center line marker for linear transducers  
**Exam types:** abdominal, breast, cardiology, gyn,  
lung, musculoskeletal, neonatal, nerve, ob, ophthalmic,  
small parts, spine, superficial, arterial, venous  
Embedded Dual Transducer Connector with 2-tap  
transducer switching function

## DURABILITY

Drop-tested at 3 feet/91.4 cm

## APPLICATION SPECIFIC CALCULATIONS

**OB/Gyn/Fertility:** Diameter/ellipse measurements,  
volume, ten follicle measurements, estimated fetal  
weight, established due date, gestational age, last  
menstrual period, multiple user-selectable authors,  
ratios, amniotic fluid index, patient report, humerus  
and tibia measurement and charts

**Arterial:** Diameter/ellipse/trace measurements,  
volume, percent diameter and area reduction,  
patient report

**Cardiac:** Ejection fraction, volume measurements,  
Simpson's rule, IVC Collapse Ratio, LA/RA Volume,  
TAPSE, Ability to view EF and FS simultaneously

## ONBOARD IMAGE AND CLIP

### STORAGE/REVIEW

16 GB internal flash memory storage capability  
Storage support for up to 500 patients  
Clip Store capability (maximum single clip length:  
60 seconds)  
Start/Stop toggle capability for clips  
USB Auto Export  
Encryption of patient data on system  
Cine review up to 255 frame-by-frame images

## MEASUREMENT TOOLS, PICTOGRAMS AND ANNOTATIONS

**2D:** Distance calipers, ellipse and manual trace

**M-Mode:** Distance and time measurements,  
heart rate calculation

### User-selectable text and pictograms

### User-defined, application-specific annotations

### Biopsy guidelines

## CONNECTIVITY (EXTERNAL DATA MANAGEMENT)

SonoSite Patient Data Archival Software (PDAS) for  
Wireless/Wired Image, Report Management  
Q-path ultrasound management system  
DICOM® Image Management (TCP/IP): Print and  
Store, Modality Work List, Storage Commit: Modality,  
Perform, Procedure Step  
Direct writing capability to USB 2.0 mass storage  
removable media (PC and MAC compatible)  
Supported export formats: MPEG-4 (H.264), JPEG,  
BMP, and HTML

## CONNECTIVITY (SYSTEM PORTS)

HDMI output to external display  
Composite video output (NTSC/PAL) to VCR or video  
printer  
Audio output  
Integrated speakers  
Ethernet or wireless image/data transfer  
USB ports (3)

## POWER SUPPLY

System operates via battery or AC power  
Rechargeable lithium-ion battery  
AC: universal power adapter, 100-240 VAC,  
50/60 Hz input, 15 VDC output  
Less than 25 sec. from power-on to scanning

## SII STAND AND PERIPHERALS

Hydraulic height adjustment, shelf for printer  
Elevated transducer holders  
Dedicated gel holder  
Tray with drawer on back of system  
Large basket with easy removal feature for cleaning  
(optional 2nd basket)  
AC Cord Retainer  
Cable management hooks for auxiliary cables  
Optional PowerPark and PowerPack

## OPTIONAL PERIPHERALS

**Printers:** Medical-grade black and white

**External data input devices:** Bar code reader

Bluetooth is a registered trademark of Bluetooth SIG, Inc.

Mac is a trademark of Apple Inc., registered in the U.S. and other countries.

DICOM is the registered trademark of the National Electrical Manufacturers  
Association for its standards publications relating to digital communications  
of medical information.

**FUJIFILM**  
Value from Innovation

**FUJIFILM SonoSite, Inc.**  
Worldwide Headquarters  
21919 30th Drive SE, Bothell, WA 98021-3904  
Tel: +1 (425) 951-1200 or +1 (877) 657-8050  
Fax: +1 (425) 951-6800  
[www.sonosite.com/products/sii](http://www.sonosite.com/products/sii)

**SonoSite Worldwide Offices**  
FUJIFILM SonoSite Australasia Pty Ltd: Australia ..... 1300-663-516  
FUJIFILM SonoSite Australasia Pty Ltd: New Zealand ..... 0800-888-204  
FUJIFILM SonoSite Brazil ..... +55 11-5574-7747  
FUJIFILM SonoSite Canada Inc. .... +1 888-554-5502  
FUJIFILM (China) Investment Co., Ltd ..... +86 21-5010-6000  
FUJIFILM SonoSite GmbH – Germany ..... +49 69-80-88-40-30  
FUJIFILM SonoSite, Inc. – USA ..... +1 425-951-1200

FUJIFILM SonoSite India Pvt Ltd. .... +91 124-288-1100  
FUJIFILM SonoSite Italy S.r.l. .... +39 02-9475-3655  
FUJIFILM SonoSite Iberica SL – Spain ..... +34 91-123-84-51  
FUJIFILM SonoSite Korea Ltd ..... +65 6380-5589  
FUJIFILM SonoSite Ltd – United Kingdom ..... +44 1462-341151  
FUJIFILM SonoSite SARL – France ..... +33 1-82-88-07-02