

FREEZE

SAVE

P21: Cardiac

MI:

1.02

TI:

0.50

DR:

THI

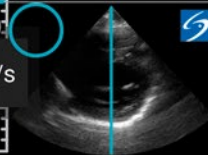
MHz

1.88

EF

11.83 cm/s

13.9



Update

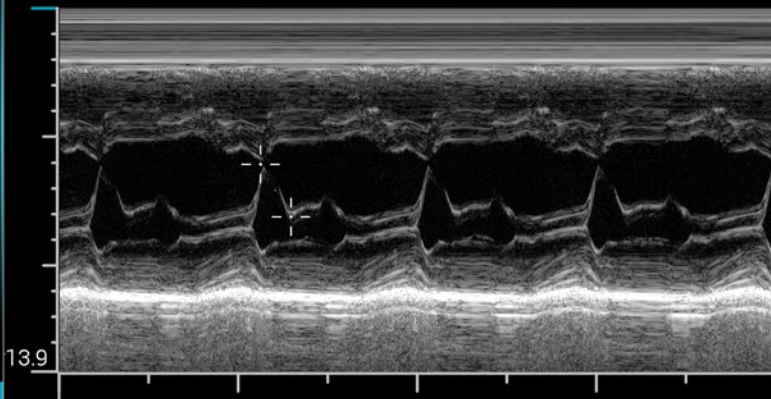
M-Line

M

Overall
Gain

Near/Far
Gain

End Study



99%

85%

04/10/2015

4 14:31

SonoSite iViz

Mobility. Clarity. Connectivity.

FUJIFILM SonoSite, Inc. introduces iViz, the next generation platform that augments the value of ultrasound for clinical users from hospital settings to clinics in remote villages with the ability to perform ultrasound when and where it is needed. iViz delivers fast and improved patient care with superior clarity, mobility, and unprecedented connectivity. Providers can seamlessly access learning resources and patient records, store exams, submit reports, and consult with remote providers for near real-time assessments.

Email ultrasound@sonosite.com to register your interest or contact your local customer representative for more information.

SONOSITE, the SONOSITE logo and iVIZ are trademarks and registered trademarks of FUJIFILM SonoSite, Inc. in various jurisdictions. FUJIFILM is a trademark and registered trademark of FUJIFILM Corporation in various jurisdictions. All other trademarks are the property of their respective owners.

Copyright ©2015 FUJIFILM SonoSite, Inc. All rights reserved. Subject to change. MKT02705 08/15



FUJIFILM
Value from Innovation

FUJIFILM SonoSite, Inc.
21919 30th Drive SE, Bothell,
Washington 98021-3904,
United States
T: +1 425 951 1200
E: ultrasound@sonosite.com
www.sonosite.com