

## Quick Reference Guide

### Turning on the system

Press the power button located at the back of the system

### Starting a study

#### New patient

- 1 Tap Enter Patient Information from the startup screen or + New Patient on the touchscreen.
  - 2 Enter patient information.
  - 3 Tap Scan to start imaging.
- All data saved during the study are linked to the patient.

#### Exam types

- 1 Select the transducer and exam.
- 2 Select a transducer and exam type.
- 3 Double-tap on the exam type or tap Scan to start imaging.

### Scanning

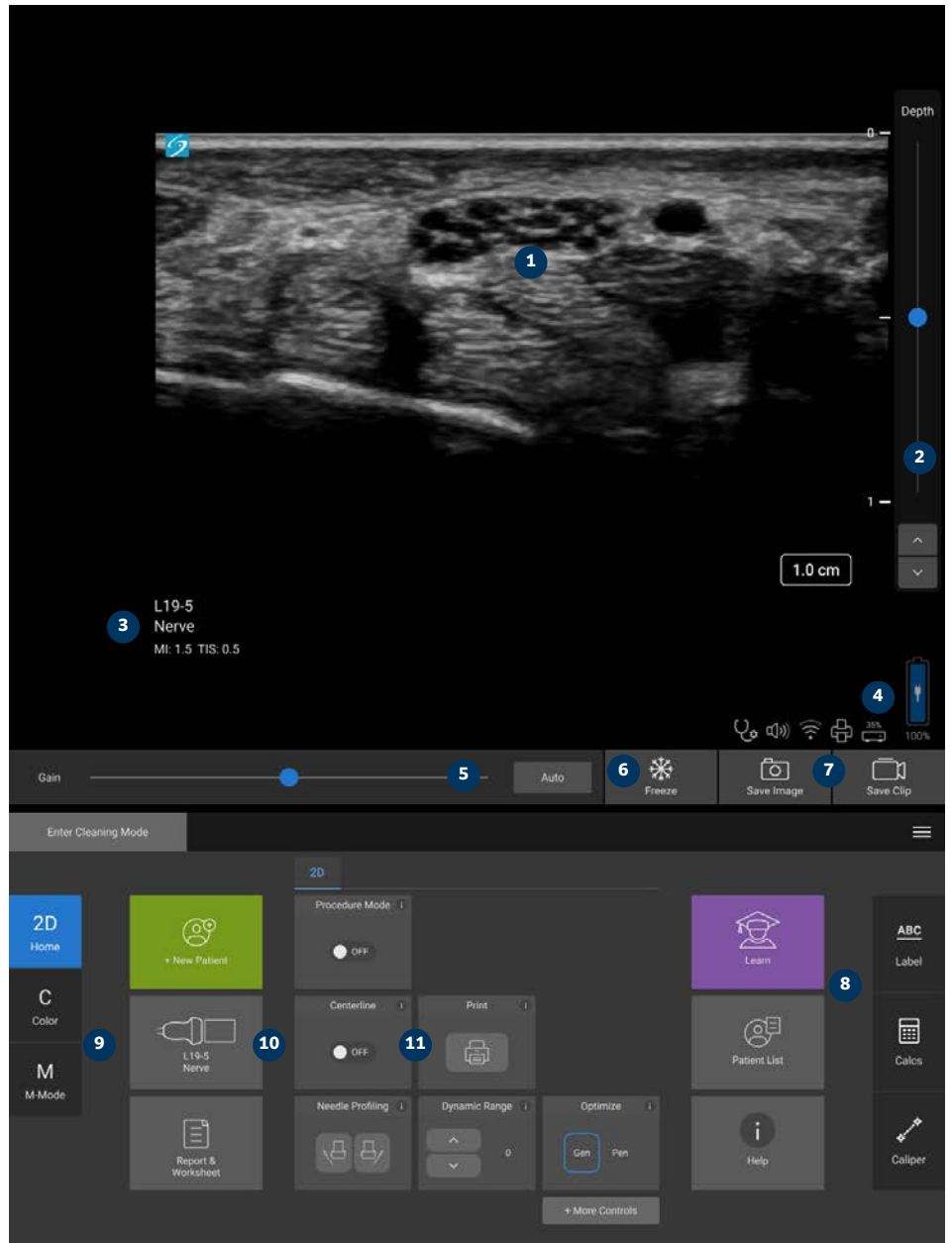
- 2D is the default mode. Tap 2D to return to the default mode.
- Tap M to scan in M Mode.
- Tap C to scan in color Doppler.

#### M Mode

- 1 On the touchscreen, position the M-line in the 2D image.
- 2 To display both the M-line and trace, tap M again.
- 3 Tap the image or the trace to toggle controls between them.

#### Color Doppler

- 1 Use the Color Type control to switch between Color Velocity (CVD) and Color Power (CPD), or CVD and Color Variance (Var), depending on the exam type. You may need to tap + More Controls on the touchscreen to find the control.
- 2 Position the color box by dragging it on the touchscreen.
- 3 Tap and drag the circle on the corner to control the size of the color box.



### Key:

- |   |                                       |
|---|---------------------------------------|
| <b>1</b> Clinical monitor and touchscreen | <b>7</b> Save buttons                 |
| <b>2</b> Depth controls                   | <b>8</b> Labels, Calcs, Calipers      |
| <b>3</b> Exam type                        | <b>9</b> Modes                        |
| <b>4</b> Battery level and connections    | <b>10</b> Study, patient, and reports |
| <b>5</b> Gain and cine controls           | <b>11</b> More controls               |
| <b>6</b> Freeze                           |                                       |

## Quick Reference Guide

### Gain

Adjust the gain by doing one of the following:

- Adjust the slider on the touchscreen.
- Tap Auto to automatically adjust the gain.

### Depth

- Use the depth up/down buttons on the right side of the touchscreen.

### Freezing, unfreezing, and using cine

- 1 Tap . The CINE controls appear to the left of the icon.
- 2 Drag your finger horizontally on the touchscreen right or left to move forward or backward through the cine frames. To move frame by frame, tap the directional arrows.
- 3 To unfreeze, tap again.

### Zoom

#### Live Zoom

- 1 Tap the Zoom control on the touchscreen.
- 2 Position the zoom box by dragging it on the touchscreen.
- 3 Tap and drag the circle on the corner to control the size of the zoom box.
- 4 Tap the control again to zoom.

#### Frozen Zoom

- 1 Tap .
- 2 Tap up or down on the zoom control to adjust the magnification.
- 3 Pan the image on the touchscreen.

### Measurements and calculations

#### Measurements

- 1 On a live or frozen image, tap Caliper
- 2 Use the ends of the calipers to position them or select a different measurement.

#### Calculations

- 1 On a live or frozen image, tap Calcs to display analysis packages.
- 2 Navigate to and select a measurement on the touchscreen.
- 3 Position the calipers on the touchscreen.

#### Labels

- 1 Tap ABC to display the labeling page.
- 2 Tap Text, Picto, or Arrow to add text, pictographs, or arrows to the image.
- 3 Position the label on the touchscreen.

#### Saving and reviewing

- Tap to save an image, current measurements, labels, and calculations. Calculations and associated measurements are also saved to the patient report.
- Tap to save a clip.
- Tap thumbnail images to access the review screen, or tap Patient List to view a different study. (You can find this option on the main touchscreen, at the bottom of the patient or report form, or from the menu.)

### Ending and exporting

- 1 End the study by tapping END STUDY. Open studies cannot be exported.
- 2 Insert a USB storage device into a USB port on the system or stand.
- 3 Tap Patient List. Select a study or studies to export.
- 4 Tap Send to, then tap USB.
- 5 Select the USB drive from the list, and choose whether to include patient information.
- 6 Tap Export.

### Help and Learn

- Tap to access on-board help.
- Access the Learn feature to view training and procedural videos.

P31256-03



CE  
2797

**FUJIFILM SONOSITE**  
Value from Innovation

**FUJIFILM Sonosite, Inc.**  
Worldwide Headquarters  
21919 30th Drive SE, Bothell, WA 98021-3904  
Tel: +1 (425) 951 1200 or +1 (877) 657 8050  
Fax: +1 (425) 951 6800  
[www.sonosite.com](http://www.sonosite.com)

**Sonosite Worldwide Offices**  
FUJIFILM Sonosite Australasia Pty Ltd: Australia . . . . . 300 663 516  
FUJIFILM Sonosite Australasia Pty Ltd: New Zealand . . . 0800 888 204  
FUJIFILM Sonosite Brazil . . . . . +55 11 5574 7747  
FUJIFILM Sonosite Canada Inc. . . . . +1 888 554 5502  
FUJIFILM (China) Investment Co., Ltd . . . . . +86 21 5010 6000  
FUJIFILM Sonosite GmbH—Germany . . . . . +49 69 80 88 40 30  
FUJIFILM Sonosite, Inc.—United States . . . . . +1 425 951 1200

**Any patient. Anywhere. Anytime.**

FUJIFILM Sonosite India Pvt Ltd . . . . . +91 124 288 1100  
FUJIFILM Sonosite Iberica SL—Spain . . . . . +34 91 123 84 51  
FUJIFILM Medical Co., Ltd.—Japan . . . . . +81 3 0418 7190  
FUJIFILM Sonosite Korea Ltd . . . . . +65 6380 5589  
FUJIFILM Sonosite Ltd—United Kingdom . . . . . +44 1462 341 151  
FUJIFILM Sonosite SARL—France . . . . . +33 182 880 702