

Ultrasound
designed for
**vascular
access**



iLook™ 25

TOOL SPECIFICATIONS

Clinical Applications

- Vascular imaging including vascular access procedures
- Superficial imaging

Imaging Modes

- 2D
- Color power Doppler

Physical Characteristics

- Height: 6.4 in. (16.26 cm)
- Width: 10.85 in. (26.57 cm)
- Depth: 1.5 in. (3.81 cm)
- Weight: 3 pounds (1.4 kg)

Transducer

- L25/10-5: 25-mm broadband (10-5 MHz) linear array

User Interface

- Controls: touch screen data input, menu, directional controller, freeze, patient information, save, power
- Integrated 5" (12.7 cm) TFT color Liquid Crystal Display with brightness and contrast controls
- System optimization presets for different patient body types

System Parameters

- System dynamic range: approximately 132 dB
- Frame rate: up to 60 frames/second

Image Storage and Cine

- Internal storage of up to 74 images for off-line printing and review
- Cine: images retained for frame-by-frame viewing and measurement
- Connect directly to a PC with SiteLink image manager software using a cable line via *iLook* Stand or mobile docking station to download bitmap images

Measurement Tool

- Single point-to-point, linear measurement

Power

- Operates via AC power with battery back-up
- AC: via universal power adaptor, 100-240 VAC, 50-60 Hz
- Battery: rechargeable lithium ion
- 30-60 minutes on fully charged, new battery

Peripheral Connections

- Composite video out (NTSC/PAL) to video printer
- Via *iLook* stand or mobile docking station to download bitmap images
- PC Direct Connectivity

 SonoSite

SonoSite, Inc.
21919 30th Drive SE, Bothell, WA USA 98021-3904
Telephone: 1-425-951-1200 • Toll free: 1-877-657-8050
Facsimile: 1-425-951-1201
www.sonosite.com

I N T R O D U C I N G

iLook™ 25



P E R S O N A L I M A G I N G T O O L

 SonoSite

Introducing the first application-specific all-digital ultrasound system: the SonoSite *iLook 25*

Peace of mind for you and your patients

Be more successful the first time...

The *iLook 25* is the easy-to-use ultrasound system designed to provide fast, accurate guidance for vascular access.

Using *iLook*, users can:

- Better visualize veins and arteries
- Increase efficiency
- Raise user confidence
- Improve patient care
- Minimize hospital risk
- Maximize departmental uptime

iLook 25 from SonoSite

Carrying ultrasound into the future of vascular access one successful insertion at a time.

To learn how *iLook* can have a positive impact for you, call 1-877-657-8050 or visit www.sonosite.com/ilook/

iLook 25 from SonoSite

Easy-to-use. Easy-to-see. More successful first-time insertions!
That's risk reduction everyone understands.

Better visualize veins and arteries...

High-resolution imaging means great image quality. The all-digital *iLook 25*'s image quality helps find anatomy in patients, including those who are technically difficult. The result is quicker and easier identification and evaluation of veins for vascular access procedures. Contributing to the system's image quality is the solid-state, broadband transducer which provides a clear, consistent image.

Increase your efficiency...

Clear visualization of veins and arteries results in more successful first-time insertions. For vascular access professionals that means increased patient throughput and greater efficiency. Plus, the *iLook 25* is a valuable tool for monitoring catheter introduction past the point of initial access during the procedure.

Raise user confidence...

With high-resolution imaging, there can be more confidence in finding a vein, guiding an introducer and following a catheter insertion. The system design also adds to user confidence with presets, reducing the number of adjustments required for optimal imaging. Fewer controls make the *iLook 25* quick to learn and easy to use, allowing the user to focus on the patient, not the ultrasound system.

Improve patient care...

Excellent image quality and increased confidence will result in more successful first-time insertions, less pain and an overall better patient experience.



iLook has a touch-point screen and all-digital imagery.

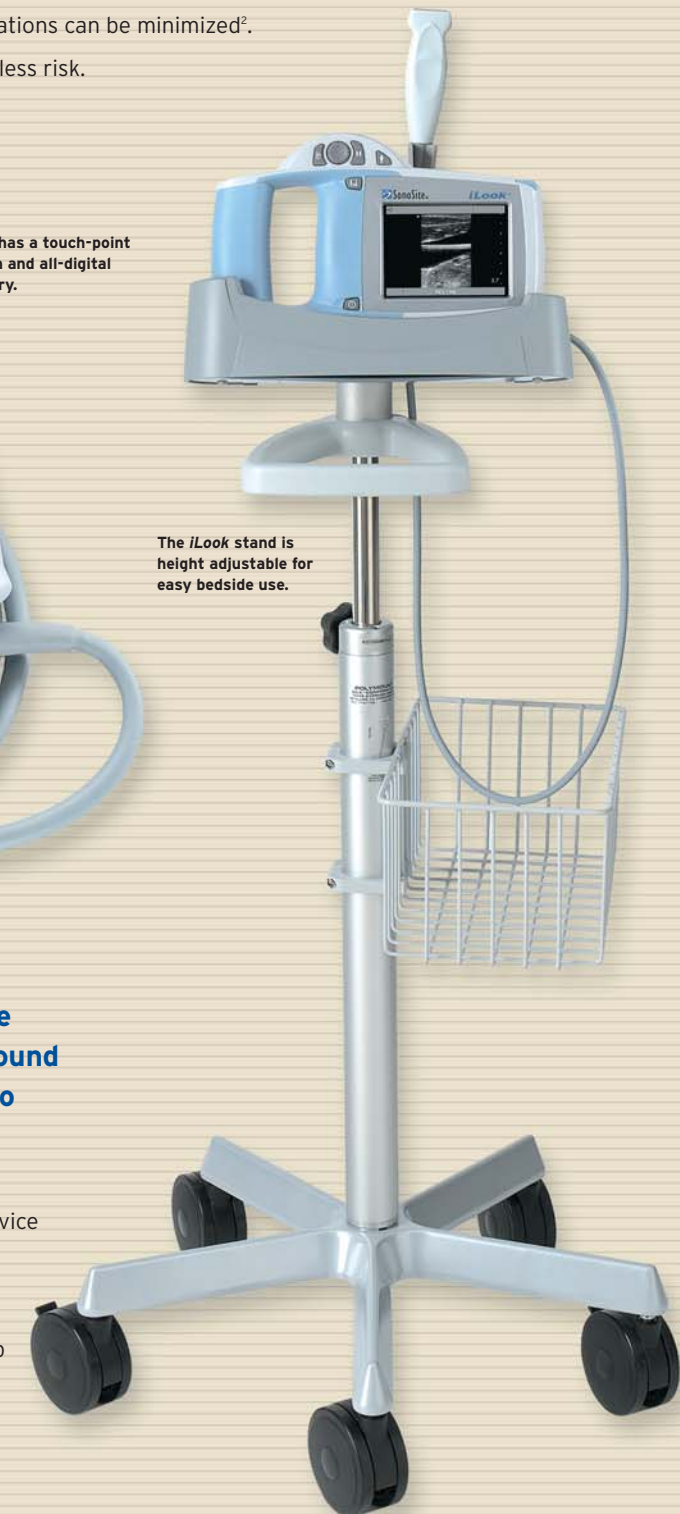
Fewer repeat insertions results in faster exams, with less patient anxiety and preparation time. That means better patient care.

Maximize uptime...

SonoSite systems and transducers are designed to withstand the rigors of active practices and are recognized for their reliability. And, with our total coverage warranty, customers can experience zero cost of ownership.

Minimize hospital risk...

Patient well being, clinical confidence and safety are important to every hospital. But so is minimizing exposure to risk. By increasing the number of successful first-time vascular access attempts with high-resolution ultrasound guidance, accidental arterial punctures and associated complications can be minimized². Fewer complications translates to less risk.



The *iLook* stand is height adjustable for easy bedside use.

iLook 25 by SonoSite is the new high-resolution ultrasound tool specifically designed to guide vascular access procedures.

And since simply placing a new device into a hospital doesn't mean overnight risk reduction, we offer complete training solutions to help incorporate ultrasound into every line insertion.

¹ Agency for Healthcare Research and Quality, "Making Health Care Safer: A Critical Analysis of Patient Safety Practices," AHRQ Publication No. 01-E058. Chapter 21. Ultrasound Guidance of Central Vein Catheterization, Jeffrey M. Rothschild, MD editor. For a complete summary of safety improvements involved in ultrasound guidance, please refer to the full chapter. As noted in the summary, benefits may not accrue until after the initial learning period for operators already experienced in the landmark technique. ² *ibid.*